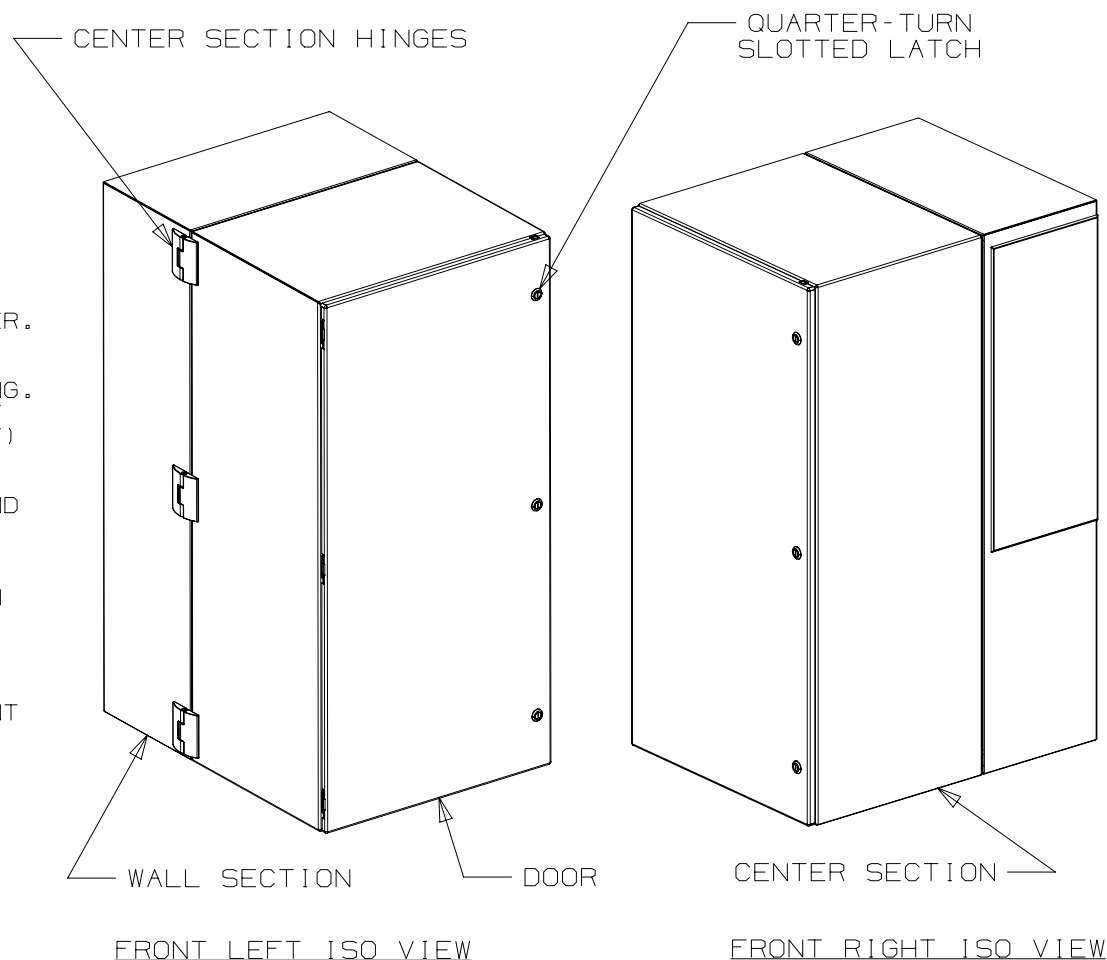


THIS COPY IS PROVIDED ON A RESTRICTED BASIS AND IS NOT TO BE USED IN ANY WAY DETRIMENTAL TO THE INTERESTS OF PANDUIT CORP.

NOTES:

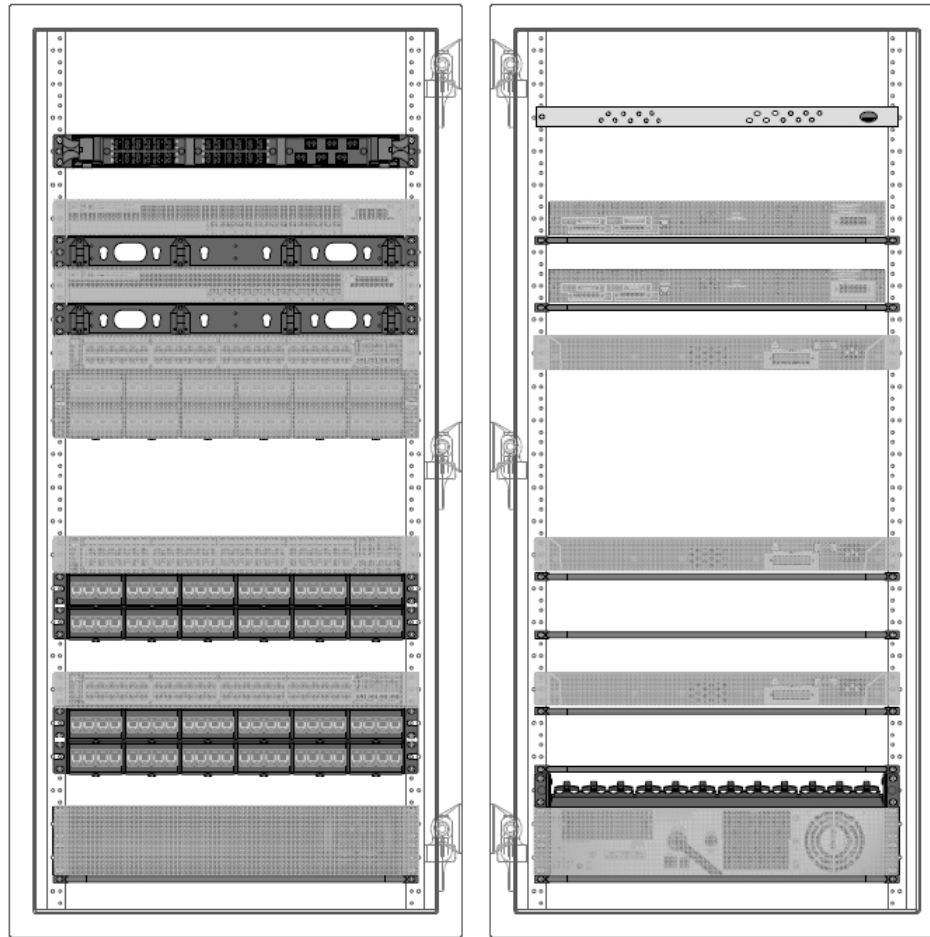
1. VISIT OUR ON-LINE CATALOG AT WWW.PANDUIT.COM FOR A LIST OF CURRENT PARTS APPLICABLE FOR USE WITH THIS PRODUCT AND INSTRUCTION SHEET (V00028CA).
2. DIMENSIONS IN PARENTHESES ARE METRIC [mm].
3. CAN BE USED WITH ANY 19" CEA STANDARD PANEL.
4. PARTS SUPPLIED:
 - 26RU DUAL HINGE NEMA 4/4X/12 ENCLOSURE
 - QUARTER-TURN SLOTTED LATCHES ARE INCLUDED PROVIDING ACCESS CONTROL TO THE ENCLOSURE.
 - ACCOMODATIONS FOR AN OPTIONAL AIR CONDITIONER.
 - 316L STAINLESS STEEL W/ #4 STAINLESS FINISH
 - INSTALLED FRONT AND REAR CAGE NUT RAILS IN OPTIMIZED POSITIONS FOR EQUIPMENT MOUNTING.
 - INSTALLED POWER RECEPTACLE ON ZDF48-6RA ONLY
 - INSTALLED FIBER ENCLOSURE (72 FIBER CAPACITY)
 - INSTALLED (2)48-PORT PATCH PANELS
 - INSTALLED CABLE MANAGEMENT
 - INSTALLED DOOR GROUND WHIPS, EQUIPMENT GROUND WHIPS (ONE END)
 - INSTALLED GROUND BAR
 - INFRASTRUCTURE GROUND CABLE
 - POWER CORDS, LABELED AND LENGTH OPTIMIZED ON ZDF48-6RA ONLY
 - 10" LONG DIN RAIL MOUNTING PROVISION
 - CABLE/FIBER/POWER PENETRATION RECOMMENDATION TEMPLATE
 - INSTRUCTIONS FOR CABLE ROUTING AND MANAGEMENT
5. CENTER HINGED SECTION
MAXIMUM LOAD RATING: 350 LBS [158.8 kg].

SHIPPING LENGTH	57"
SHIPPING WIDTH	39"
SHIPPING HEIGHT	35-1/4"
SHIPPING WEIGHT	270 lbs. 122.5 kg.
ENCLOSURE WEIGHT	218 lbs. 98.9 kg.



TITLE			
ZDF48-6EA AND ZDF48-6RA PRECONFIGURED 48" INDUSTRIAL DISTRIBUTION FRAME			
CUSTOMER DRAWING			
ITEM REVISION NAME		13V397SA/00	
DATASET FILE NAME		13V397SA_DC-00A	
UNLESS OTHERWISE SPECIFIED, DIMENSIONAL TOLERANCES ARE: IN [mm]		PANDUIT MATERIAL: SEE NOTES	
.x ± .1 [2.54] .xxx ± .015 [0.38]			
.xx ± .03 [0.76] ANGLES ± 5°			
THIRD ANGLE PROJECTION		DRAWING NUMBER: 13V397SA_DC/00A	
DRAWN BY	DATE	CHK	SCALE
ALZA	07/14/2016	NWW	NONE
SHT 1 OF 4			SIZE A

00A	07/14/2016	ALZA	NWW	MBVE	RELEASED	13V397SA
REV	DATE	BY	CHK	APR	DESCRIPTION	ECN



Front View

Back View

- RU 24 PANDUIT RGRG19CN GROUND BAR
- RU 23 PANDUIT FRME1U FIBER ENCLOSURE
- RU 22 OPEN (ADDITIONAL FRME1U IF REQUIRED)
- RU 21 CUSTOMER SWITCH w/ 12 FIBER LS NICs – “B”
- RU 20 PANDUIT CMPHF1 HORIZONTAL CABLE MANGER
- RU 19 CUSTOMER FIBER w/ 12 FIBER LS NICs– “A”
- RU 18 PANDUIT CMPHF1 HORIZONTAL CABLE MANGER
- RU 17 OPTIONAL CUSTOMER SWITCH – “C”
- RU 15-16 OPTIONAL PANDUIT CPP48WBLY 48 PORT COPPER PATCH PANEL
- RU 12-14 OPEN
- RU 11 CUSTOMER SWITCH – “B”
- RU 9-10 PANDUIT CPP48WBLY 48 PORT COPPER PATCH PANEL
- RU 8 OPEN
- RU 7 CUSTOMER SWITCH – “A”
- RU 5-6 PANDUIT CPP48WBLY 48 PORT COPPER PATCH PANEL
- RU 4 PANDUIT SRBBRWC STRAIN RELIEF BAR
- RU 2-3 CUSTOMER UPS
- RU 1 OPEN

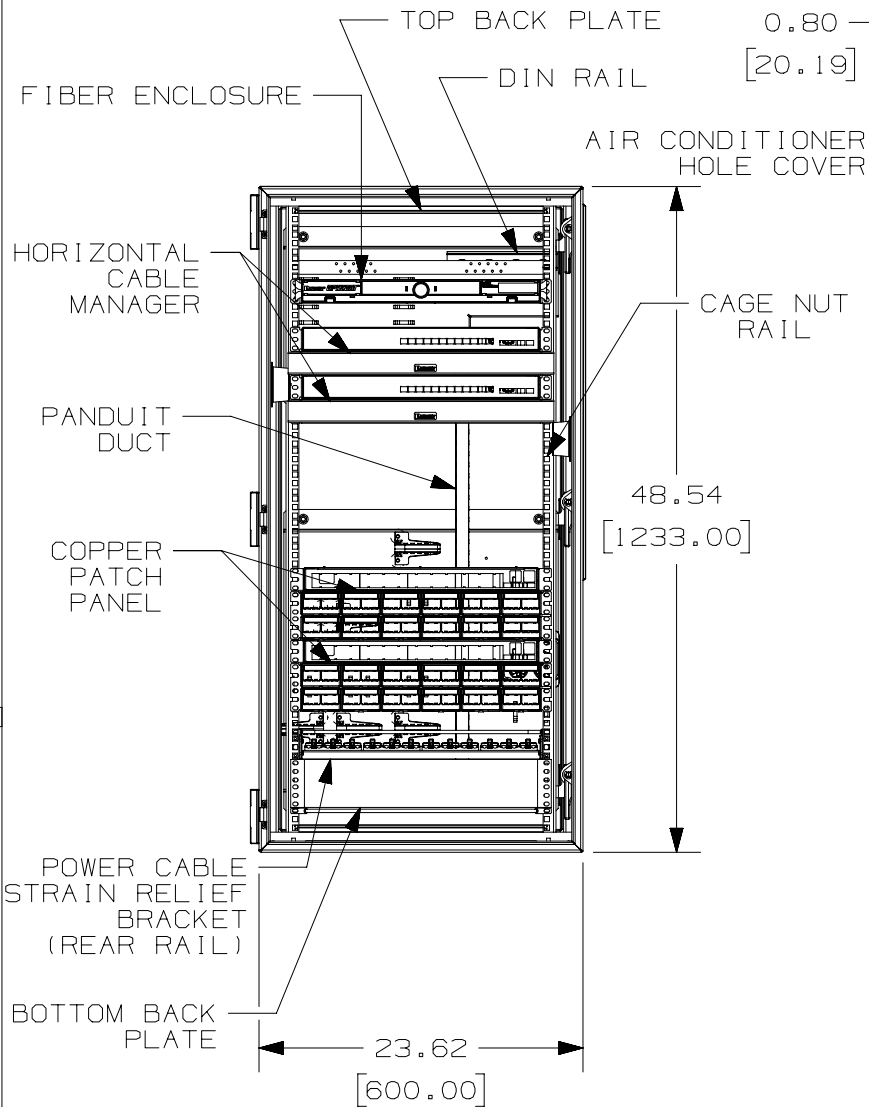
TITLE		ZDF48-6EA AND ZDF48-6RA PRECONFIGURED 48" INDUSTRIAL DISTRIBUTION FRAME	
CUSTOMER DRAWING			
ITEM REVISION NAME		13V397SA/00	
DATASET FILE NAME		13V397SA_DC-00A	
UNLESS OTHERWISE SPECIFIED, DIMENSIONAL TOLERANCES ARE: IN [mm]		<div> <div> <div>.x ± .1 [2.54]</div> <div>.xxx ± .015 [0.38]</div> </div> <div> <div>.xx ± .03 [0.76]</div> <div>ANGLES ± 5 °</div> </div> </div>	
THIRD ANGLE PROJECTION			
DRAWN BY		ALZA	
DATE		07/14/2016	
CHK		NWW	
SCALE		NONE	
SHT 2 OF 4		A	

00A	07/14/2016	ALZA	NWW	MBVE	SEE SHEET 1 FOR REVISIONS	13V397SA
REV	DATE	BY	CHK	APR	DESCRIPTION	ECN

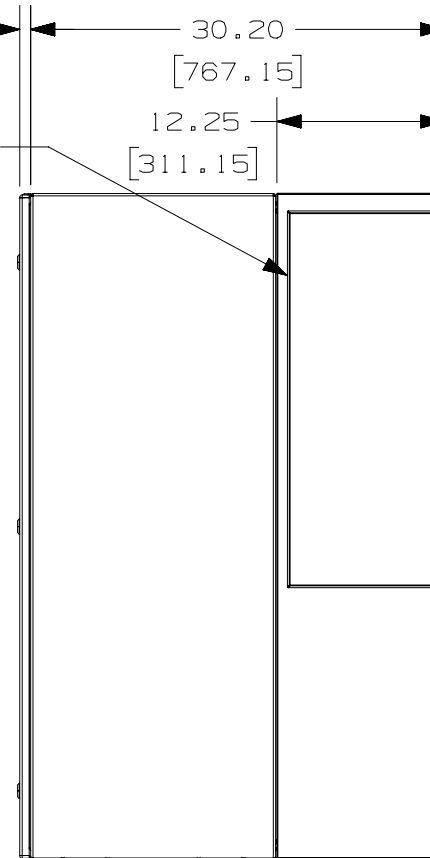
2

1

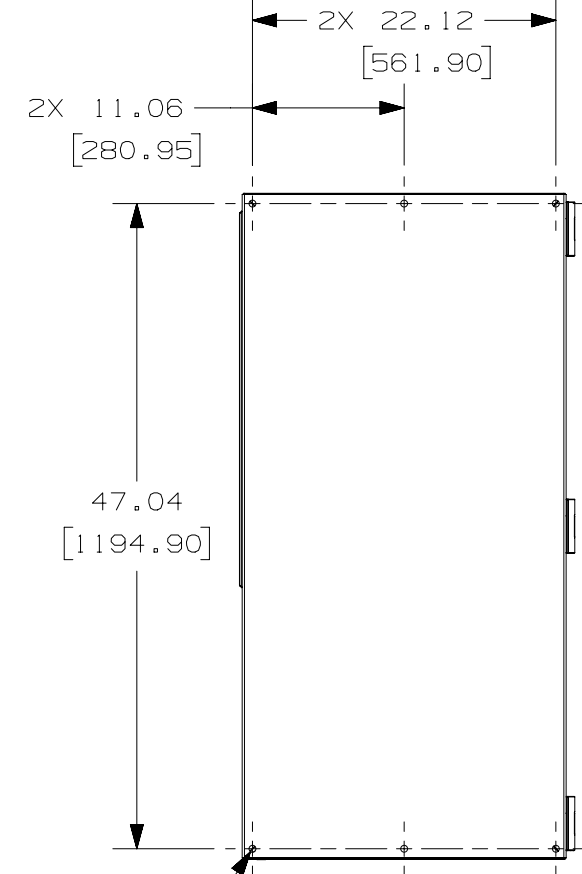
THIS COPY IS PROVIDED ON A RESTRICTED BASIS AND IS NOT TO BE USED IN ANY WAY DETRIMENTAL TO THE INTERESTS OF PANDUIT CORP.



FRONT VIEW
DOOR HIDDEN TO SHOW
INSIDE DETAILS



SIDE VIEW



6X Ø 0.50
[12.70]
MOUNTING HOLES

BACK VIEW

TITLE		ZDF48-6EA AND ZDF48-6RA PRECONFIGURED 48" INDUSTRIAL DISTRIBUTION FRAME	
ITEM REVISION NAME		CUSTOMER DRAWING	
13V397SA/00		PANDUIT	
DATASET FILE NAME		13V397SA_DC-00A	
UNLESS OTHERWISE SPECIFIED, DIMENSIONAL TOLERANCES ARE: IN [mm]		MATERIAL:	
.x ± .1 [2.54] .xxx ± .015 [0.38]		SEE SHEET 1 NOTES	
.xx ± .03 [0.76] ANGLES ± 5 °		DRAWING NUMBER:	
THIRD ANGLE PROJECTION		13V397SA_DC/00A	
DRAWN BY	DATE	CHK	SCALE
ALZA	07/14/2016	NWW	NONE
SHT 3 OF 4			SIZE
			A

00A	07/14/2016	ALZA	NWW	MBVE	SEE SHEET 1 FOR REVISIONS	13V397SA
REV	DATE	BY	CHK	APR	DESCRIPTION	ECN

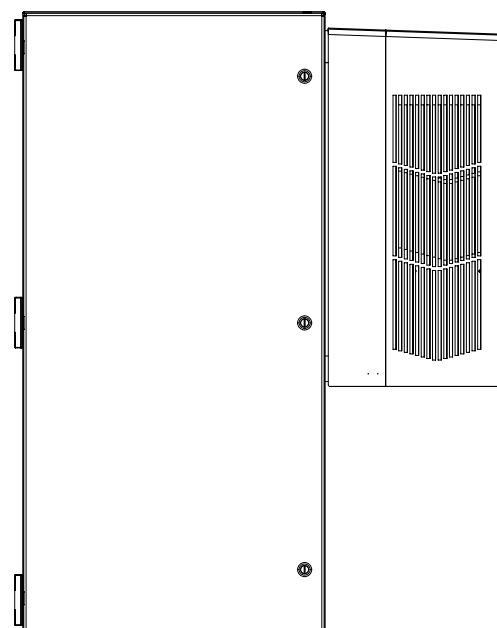
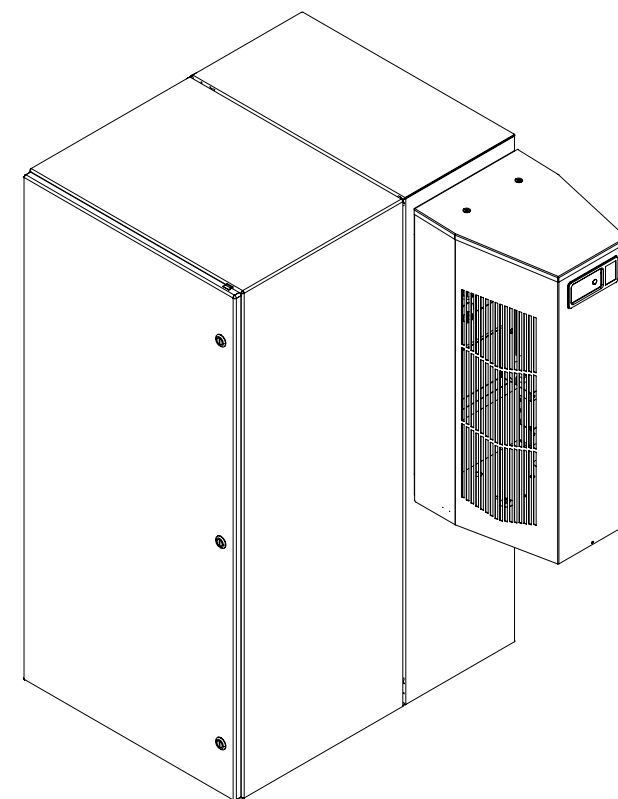
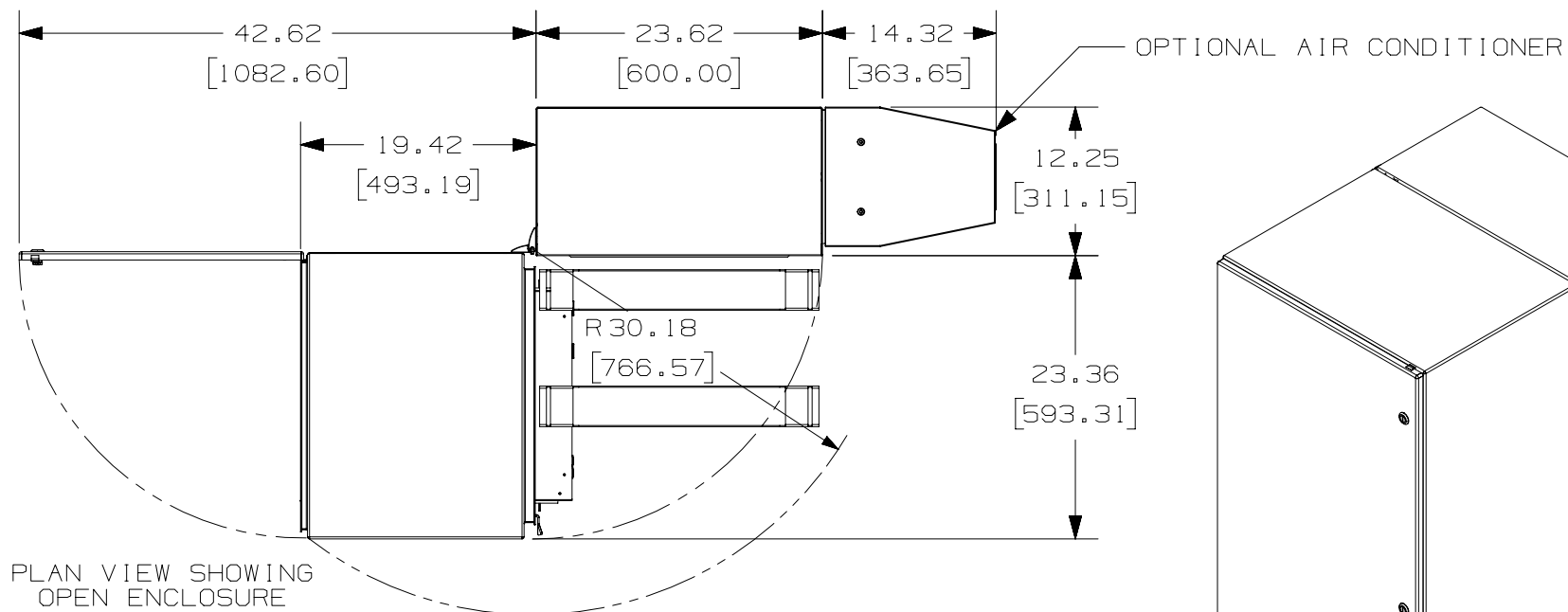
2

1

2

1

THIS COPY IS PROVIDED ON A RESTRICTED BASIS AND IS NOT TO BE USED IN ANY WAY DETRIMENTAL TO THE INTERESTS OF PANDUIT CORP.



TITLE

ZDF48-6EA AND ZDF48-6RA
PRECONFIGURED 48" INDUSTRIAL DISTRIBUTION FRAME

CUSTOMER DRAWING

ITEM REVISION NAME

13V397SA/00

DATASET FILE NAME

13V397SA_DC-00A

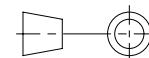
UNLESS OTHERWISE SPECIFIED,
 DIMENSIONAL TOLERANCES ARE: IN [mm]

.x ± .1 [2.54]

.xxx ± .015 [0.38]

.xx ± .03 [0.76]

ANGLES ± 5°



THIRD ANGLE
 PROJECTION

MATERIAL:

SEE SHEET 1 NOTES

DRAWING NUMBER:

13V397SA_DC/00A

00A	07/14/2016	ALZA	NWW	MBVE	SEE SHEET 1 FOR REVISIONS	13V397SA
REV	DATE	BY	CHK	APR	DESCRIPTION	ECN

DRAWN BY	DATE	CHK	SCALE	SIZE
ALZA	07/18/2016	NWW	NONE	A

SHT 4 OF 4

2

1