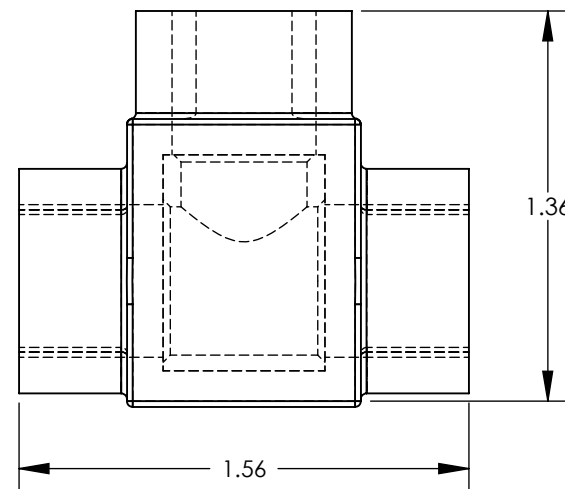
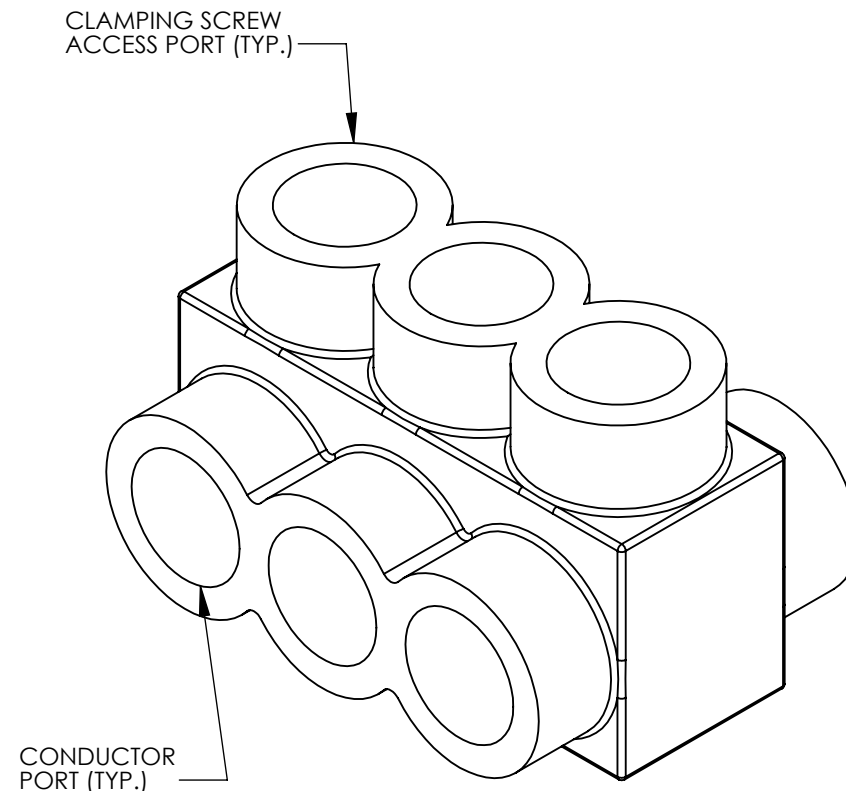
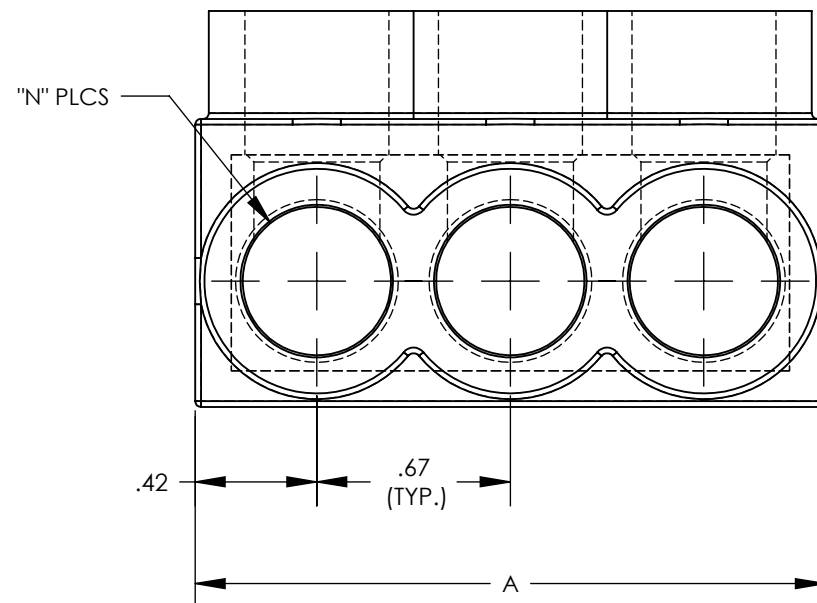


THREE PORT CONNECTOR BLOCK SHOWN
WITH PLASTIC CLOSURE PLUGS REMOVED.
SEE TABLE FOR DIMENSIONS OF PARTS
WITH ADDITIONAL PORTS

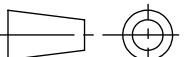


PANDUIT FINISHED GOODS P/N	CONDUCTOR RANGE	HEX KEY	SCREW QTY.	CAP (SCREW PORT) QTY.	CAP (WIRE PORT) QTY.	A	L	N	TIGHTENING TORQUE
PCSB210-2-12	# 2/0 - #14 STR #10 - #14 SOL	3/16	2	2	4	1.52	1.265	2	120 in/lb
PCSB210-3-6		3/16	3	3	6	2.19	1.937	3	
PCSB210-4-6		3/16	4	4	8	2.86	2.609	4	
PCSB210-5-6		3/16	5	5	10	3.53	3.281	5	
PCSB210-6-6		3/16	6	6	12	4.20	3.953	6	
PCSB210-8-4		3/16	8	8	16	5.55	5.297	8	
PCSB210-10-2Y	# 2/0 - #14 STR #10 - #14 SOL	3/16	10	10	20	6.89	6.641	10	120 in/lb
PCSB210-12-2Y		3/16	12	12	24	8.24	7.985	12	
PCSB210-14-1Y		3/16	14	14	28	9.58	9.329	14	



NOTES:

1. UL486A-UL486B LISTED, DUAL RATED CU9AL FOR ALUMINUM OR COPPER CONDUCTORS. MEETS OR EXCEEDS ANSI C119.4
2. SEE TABLE FOR WIRE RANGE.
3. STRIP LENGTH: .56 +.06/-0
4. FOR TIGHTENING TORQUE SEE TABLE
5. VOLTAGE RATING: 600 V. MAX. BUILDING WIRE,
1000 V. MAX. IN SIGNS & FIXTURES.
6. TEMPERATURE RATING: 90 °C (CU9AL).
7. CONNECTOR BLOCK BODY ARE MADE FROM ALUMINUM.
CONDUCTOR PORTS IN CONNECTOR BLOCK
ARE PREFILLED WITH AN OXIDE-INHIBITING COMPOUND.
8. CONNECTOR TO INCLUDE TIN PLATED ALUMINUM CLAMPING
SCREWS FOR EACH CONDUCTOR PORT.
9. INSULATION MATERIAL IS CLEAR BLUE PVC.
10. CLAMPING SCREW ACCESS PORTS AND ALL WIRE ENTRY PORTS ARE
PROVIDED WITH REMOVABLE PLASTIC CLOSURE PLUGS.
11. ALL DIMENSIONS SHOWN ARE NOMINAL.
12. ONLY ONE CONDUCTOR PER PORT ALLOWED.
13. PACKAGE QTY: -12 = 12 PCS.
 -6 = 6 PCS.
 -4 = 4 PCS.
14. THIS PART IS RoHS COMPLIANT

							<div> <div>TITLE</div> <div>MULTI-TAP INSULATED CONNECTORS PCSB 2/0 SERIES CUSTOMER DRAWING</div> </div>			
							<div> <div>ITEM REVISION NAME</div> <div>N41244BB-C41244/10</div> </div>			
							<div> <div>DATASET FILE NAME</div> <div>C41244 r10.SLDDRW</div> </div>			
							<div> <div>UNLESS OTHERWISE SPECIFIED, DIMENSIONAL TOLERANCES ARE: IN [mm]</div> <div> <div>.X ±</div> <div>.XX ± .02</div> </div> <div> <div>.XXX ±</div> <div>ANGLES ±</div> </div> <div>  <div>THIRD ANGLE PROJECTION</div> </div> </div>			
10	11/22	BARK	JHNU	MRWA	A. Revised insulation, clear blue PVC was clear PVC	127186	<div> <div>MATERIAL</div> <div>SEE NOTES</div> </div>			
09	2/13	JHNU	JHNU	RGB	REVISED TITLE BLOCK	N41244BB-C41244	<div> <div>DRAWING NUMBER</div> <div>C41244</div> </div>			
REV	DATE	BY	CHK	APR	DESCRIPTION	ECN	<div> <div>DRAWN BY</div> <div>MS</div> <div>DATE</div> <div>8/99</div> <div>CHK</div> <div>RLS</div> <div>SCALE</div> <div>NONE</div> </div>			
							<div> <div>SHEET 1 OF 1</div> <div>SIZE B</div> </div>			