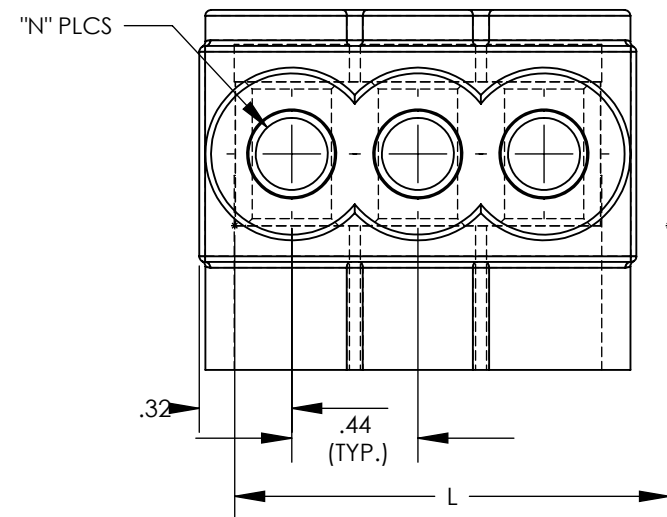
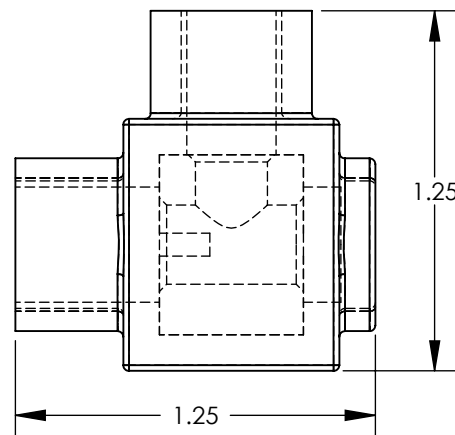
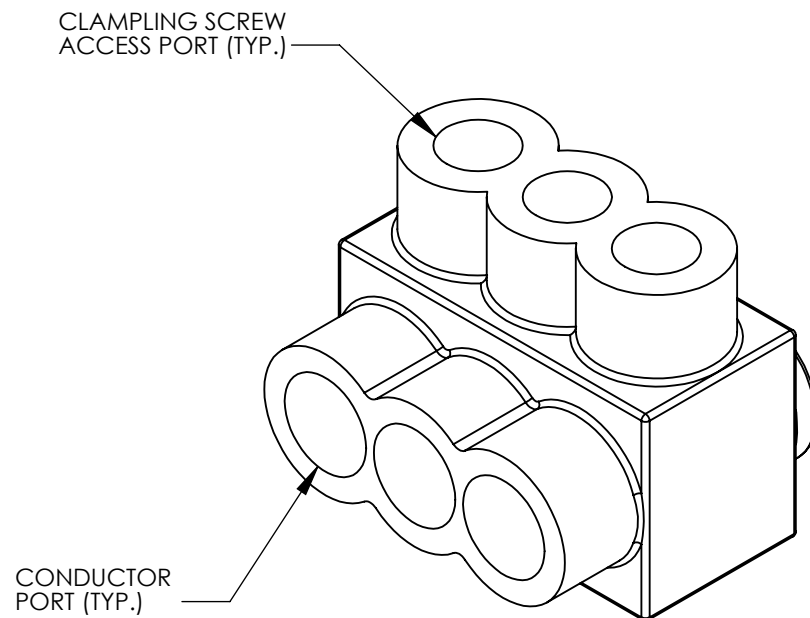
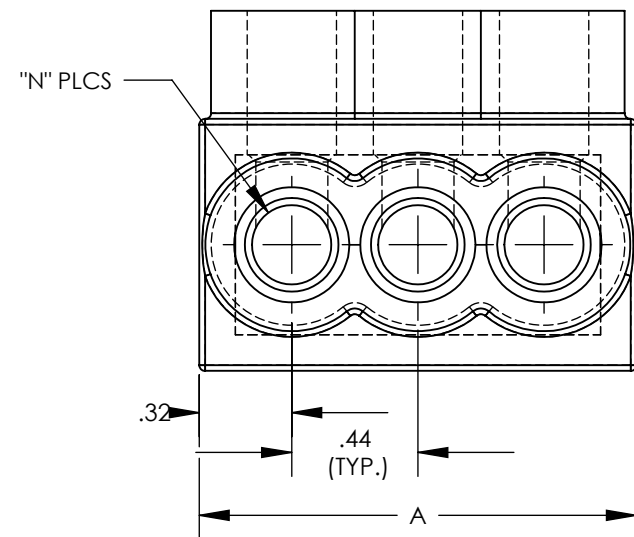


THIS COPY IS PROVIDED ON A RESTRICTED BASIS AND IS NOT TO BE USED IN ANY WAY DETRIMENTAL TO THE INTERESTS OF PANDUIT CORP.



THREE PORT CONNECTOR BLOCK SHOWN  
WITH PLASTIC CLOSURE PLUGS REMOVED.  
SEE TABLE FOR DIMENSIONS OF PARTS  
WITH ADDITIONAL PORTS


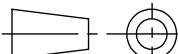


PANDUIT FINISHED GOODS P/N	CONDUCTOR RANGE	HEX KEY	SCREW QTY.	CAP (SCREW PORT) QTY.	CAP (WIRE PORT) QTY.	A	L	N	TIGHTENING TORQUE
PCSB250-2S-6Y	250 kcmil - #10 STR	5/16	2	2	2	2.03	1.781	2	275 in/lb
PCSB250-3S-6Y		5/16	3	3	3	2.97	2.718	3	
PCSB250-4S-6Y		5/16	4	4	4	3.91	3.656	4	
PCSB250-5S-4Y		5/16	5	5	5	4.84	4.593	5	
PCSB250-6S-4Y		5/16	6	6	6	5.78	5.531	6	
PCSB250-8S-3Y		5/16	8	8	8	7.66	7.406	8	
PCSB250-10S-2Y		5/16	10	10	20	9.53	9.281	10	
PCSB250-12S-2Y		5/16	12	12	24	11.41	11.156	12	
PCSB250-14S-1Y		5/16	14	14	28	13.28	13.031	14	



NOTES:

1. UL486A-UL486B LISTED, DUAL RATED CU9AL FOR ALUMINUM OR COPPER CONDUCTORS. MEETS OR EXCEEDS ANSI C119.4
2. SEE TABLE FOR WIRE RANGE.
3. STRIP LENGTH: 94 +.06/-0
4. FOR TIGHTENING TORQUE SEE TABLE
5. VOLTAGE RATING: 600 V. MAX. BUILDING WIRE, 1000 V. MAX. IN SIGNS & FIXTURES.
6. TEMPERATURE RATING: 90°C (CU9AL).
7. CONNECTOR BLOCK BODY ARE MADE FROM ALUMINUM. CONDUCTOR PORTS IN CONNECTOR BLOCK ARE PREFILLED WITH AN OXIDE-INHIBITING COMPOUND.
8. CONNECTOR TO INCLUDE TIN PLATED ALUMINUM CLAMPING SCREWS FOR EACH CONDUCTOR PORT.
9. INSULATION MATERIAL IS CLEAR BLUE PVC.
10. CLAMPING SCREW ACCESS PORTS AND ALL WIRE ENTRY PORTS ARE PROVIDED WITH REMOVABLE PLASTIC CLOSURE PLUGS.
11. ALL DIMENSIONS SHOWN ARE NOMINAL.
12. ONLY ONE CONDUCTOR PER PORT ALLOWED.
13. PACKAGE QTY: -12 = 12 PCS.  
                          -6 = 6 PCS.  
                          -4 = 4 PCS.  
                          -3 = 3 PCS.  
                          -2 = 2 PCS.
14. THIS PART IS RoHS COMPLIANT

							TITLE MULTI-TAP INSULATED CONNECTORS PCSB250 SERIES SINGLE SIDED CUSTOMER DRAWING						
							ITEM REVISION NAME N41525BB-C41525/06						
							DATASET FILE NAME C41525 r06.SLDDRW						
							UNLESS OTHERWISE SPECIFIED, DIMENSIONAL TOLERANCES ARE: IN [mm] .X ± .XXX ± .XX ± .02 ANGLES ±  THIRD ANGLE PROJECTION						
06	11/22	BARK	JHNU	MRWA	A. Revised insulation, clear blue PVC was clear PVC	127186					MATERIAL SEE NOTES		
00	2/13	JHNU	JHNU	RGB	REVISED TITLE BLOCK	N41525BB-C41525					DRAWING NUMBER C41525		
REV	DATE	BY	CHK	APR	DESCRIPTION	ECN	DRAWN BY MS	DATE 8/99	CHK RLS	SCALE NONE	SHEET 1 OF 1	SIZE B	