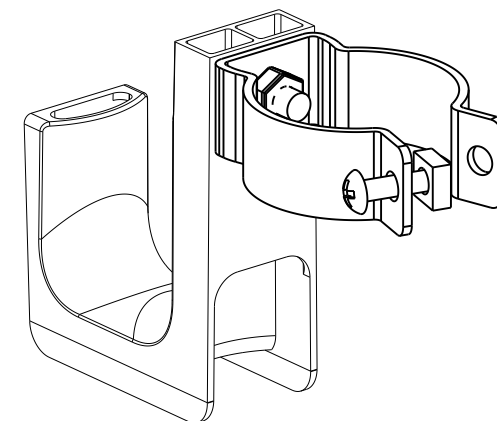
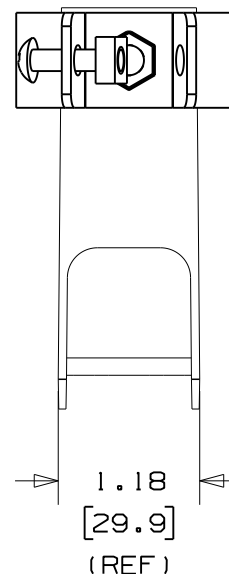
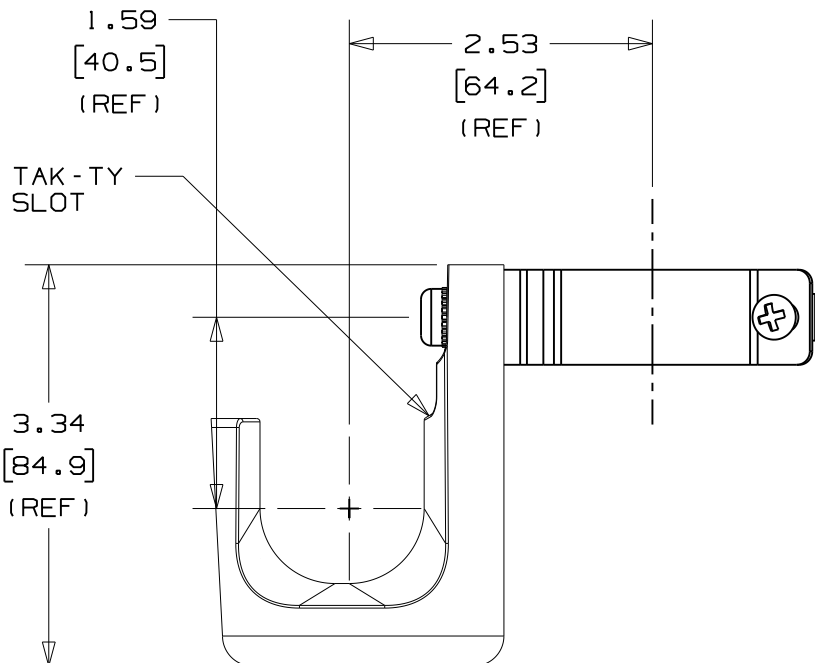


THIS COPY IS PROVIDED ON A RESTRICTED BASIS AND IS NOT TO BE USED IN ANY WAY DETRIMENTAL TO THE INTERESTS OF PANDUIT CORP.

PANDUIT PART NO.	FLOOR PEDESTAL APPLICATION	WEIGHT lbs 10 (g) pcs
JP131UF100----	.88 [22.4] SQUARE OR 1.13 TO 1.38 [28.7 TO 35.1] DIAMETER	2.71 [1230.3]



NOTES:

- SEE CURRENT PRICE SHEET FOR PART NUMBER SUFFIX DESIGNATION FOR PACKAGE SIZE AND PRODUCT COLOR.
- HOOK MATERIAL: NYLON 6/6
BOLT MATERIAL: ZINC PLATED STEEL
LOCK NUT MATERIAL: ZINC PLATED STEEL
CLAMP MATERIAL: PLATED STEEL
- PRODUCT IS DESIGNED TO SUPPORT A MAXIMUM OF 1 5/16" (33.34) DIAMETER BUNDLE. MAXIMUM RECOMMENDED STATIC LOAD: 25 lbs.
- PRODUCT INCORPORATES FEATURES ALLOWING USER TO RETAIN CABLE BUNDLES IN J-PRO J-HOOK WITH TAK-TY CABLE TIES UP TO 3/4" WIDE.
- PRODUCT MARKINGS:
cULus logo and statement:
"SUITABLE FOR USE IN AIR HANDLING SPACES IN ACCORDANCE WITH SECTION 300-22 (C) & (D) OF THE NATIONAL ELECTRIC CODE."
ULC logo and statement:
"IN ACCORDANCE WITH CAN/ULC S-102.2 IN SINGLE UNITS OR PAIRS, 4 ft (1220mm) MIN. SPACING, FSR=0, SDC=20."

DIMENSIONS IN BRACKETS ARE METRIC [mm]

CAD FILENAME/LAYERS

10K016DL_DC_GB3043CL/00B

PANDUIT

CORP.

TINLEY PARK, ILLINOIS

J-PRO J-HOOK WITH
UNDER FLOOR PEDESTAL
SUPPORT CLAMP (JP131UF100----

UNLESS OTHERWISE SPECIFIED,
DIMENSIONAL TOLERANCES ARE:

(.X) ±0.05 (1.31 (.XXX) ±0.010 (0.25)
(.XX) ±0.02 (0.5) ANGLES ± 5°

UNLESS OTHERWISE SPECIFIED,

ALL DIMENSIONS ARE GIVEN

IN INCHES, THIRD ANGLE PROJECTION.

OOB	03/04/11	GDH	GGC	REVISED TABLE. UPDATED DRAWING TO TEAMCENTER FORMAT	GB3043CL	OOB	GLZ			DRAWN BY	JAD	MAT'L:	SCALE	NONE
R	1/19/06	JAD		INITIAL RELEASE	GB3043CL	R				DATE	1/19/06	SEE NOTE 2	DRAWING NO.	
REV	DATE	BY	CHK	DESCRIPTION	ECN	- R	CUST	SUP		CHK'D	GLZ		GB3043CL	DWG A SIZE