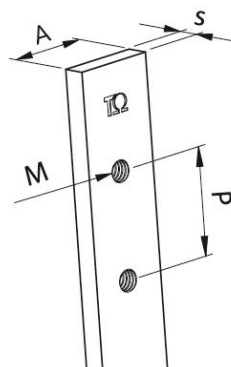
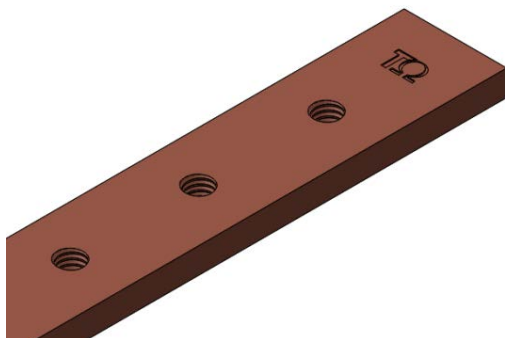


Product Datasheet BRF1031



Main

Family	Copper and Aluminium busbars		
Version	Threaded copper bars		
Code	BRF1031		
Reference	BRF 15X5X2000 PC		
Number per package	4		
Weight (kg)	1.16		
Thickness (mm)	5		
Length (mm)	2000		
Dimensions (mm)	A = 15	s = 5	P = 18
Bolt size	M6		
Section (mm ²)	75		

In (A) vs ΔT^*	In (A)	ΔT
	245	35 °C
	314	55 °C
	357	70 °C
	442	105 °C

*Table of ampacities (A) are based on temperature rise ΔT with reference room temperature of 35 °C

Disclaimer: This documentation is not intended as a substitute for and is not to be used for determining suitability or reliability of these products for specific user applications

Technical Characteristics

Electrolytic copper Cu-ETP 99.90%

Rounded corners

Resistivity: $0.0172 \Omega \text{ mm}^2/\text{m}$

Density: 8.9 kg/dm^3

Advantages

Prepunched and threaded copper bars

Ready to use

No need for punching tools

Wiring time savings



For derating coefficient for the use of bars in parallel please refer to the catalogue.

Please contact Teknomega for non-specified tolerances.