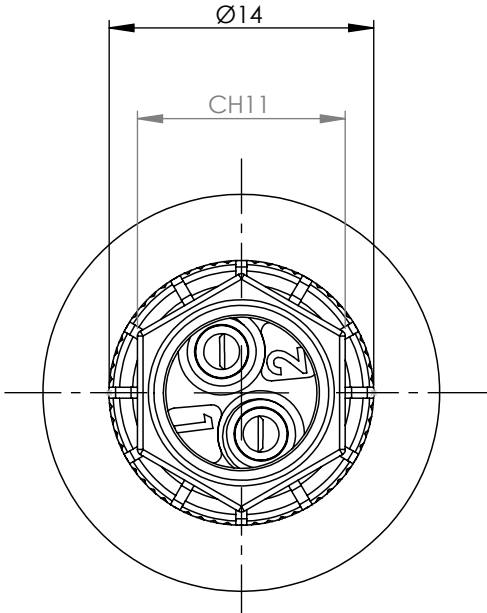
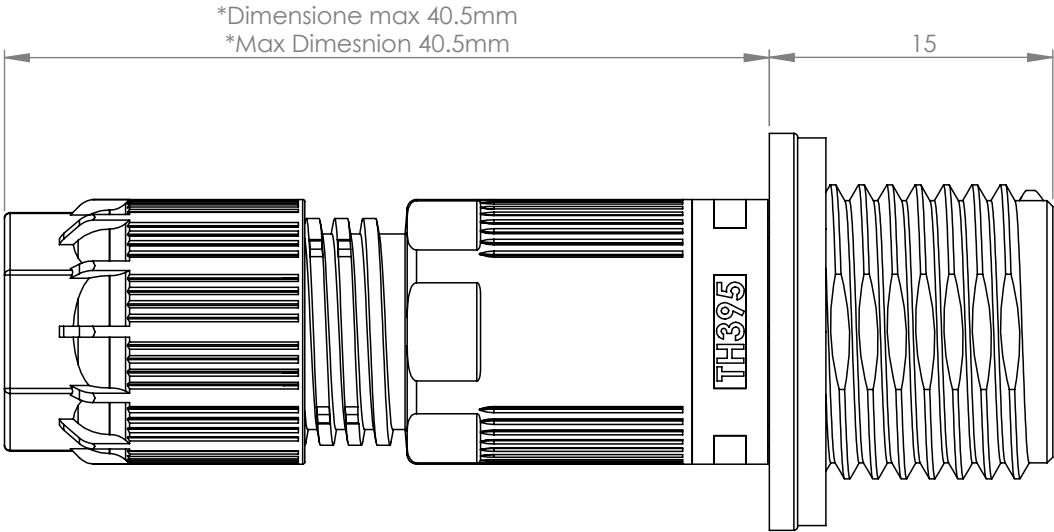
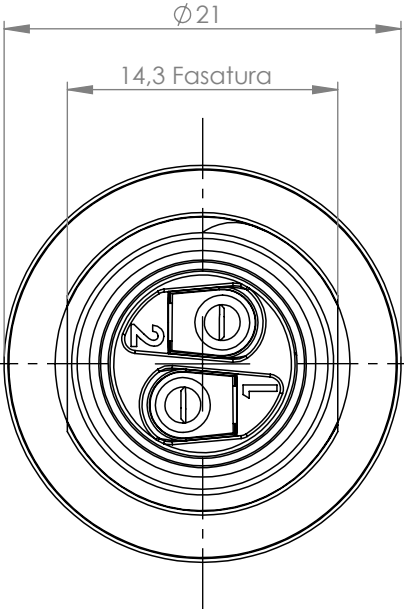


Tolleranze generali

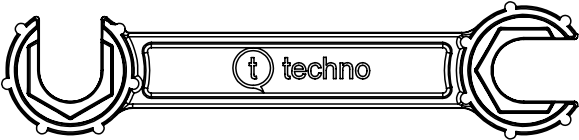
Particolari stampati in materiale termoplastico: rif ISO 2768MK - Particolari lavorati alle macchine utensili: rif. UNI EN 22768
Particolari tranciati in metallo: rif. UNI EN 22768 - grado IT10 per dim. lineari - grado IT11 quote di piega - angoli di piega ` ± 1

*= Quota variabile per tipologia di cavo
Variable dimension by type of cable

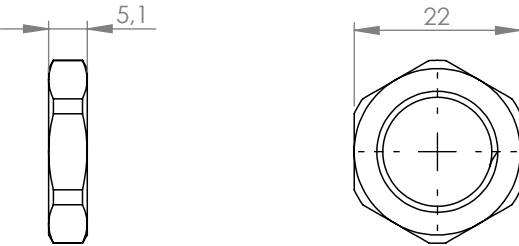


ACCESSORI/ACCESSORIES

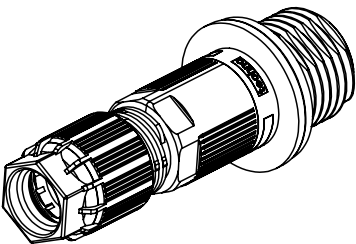
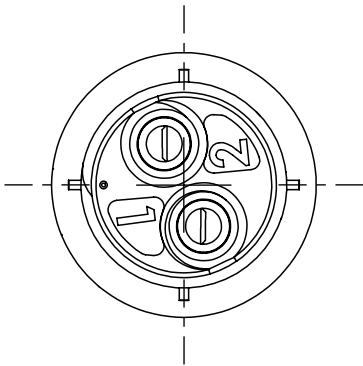
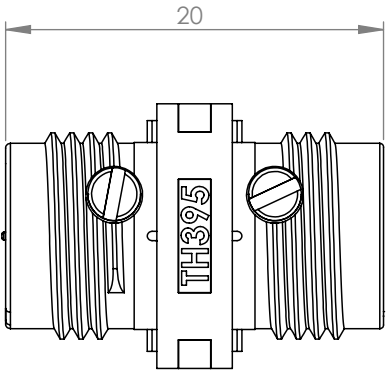
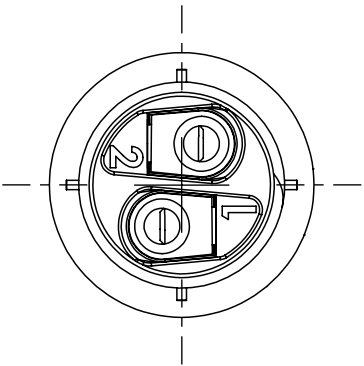
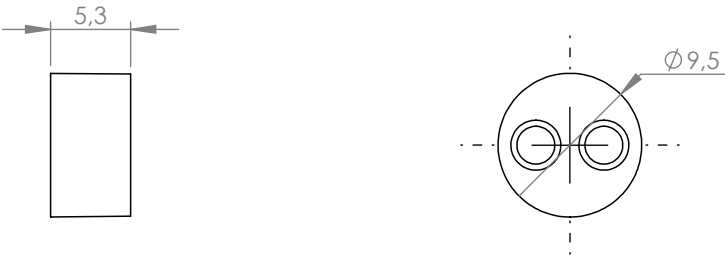
Cod. 6000462KC



Cod. 6000046CC



Cod. 6000729GT



<div>Attenzione: Questo disegno è proprietà intellettuale della Techno srl e non può essere copiato, ristampato, o comunque utilizzato senza autorizzazione scritta della Techno srl. This drawing and all informations contained here cannot be used or reproduced, integrally or partially, without Techno srl written authorization.</div>	Materiale-Material:			Titolo-Title:						
	Trattamento-Treatment:			Kit Micro Joint Panel mounted Connector 2P Screw 1/2 IP68						
	N° documento cliente Customer ref			Peso [gr]: Weight [gr]:		31.76				
	Disegnato - Drawn by:		M. Strada	Data: Date:		2025-07-08				
	Controllato-Checked by:		M. Strada	Data: Date:		2025-07-16				
				Scala-Scale:		1:1				
			Formato - Format		A3		Progetto-Project:			
					TH395					
						N° Disegno - Drawing N° THB.395.N2A.R		Rev. Rev.	Foglio N° Sheet N°	N° Fogli N° of sheets
						Nome file - Filename THB.395.N2A.R		00	1	1