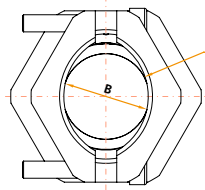
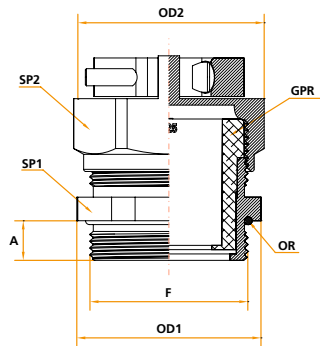


# PRAT

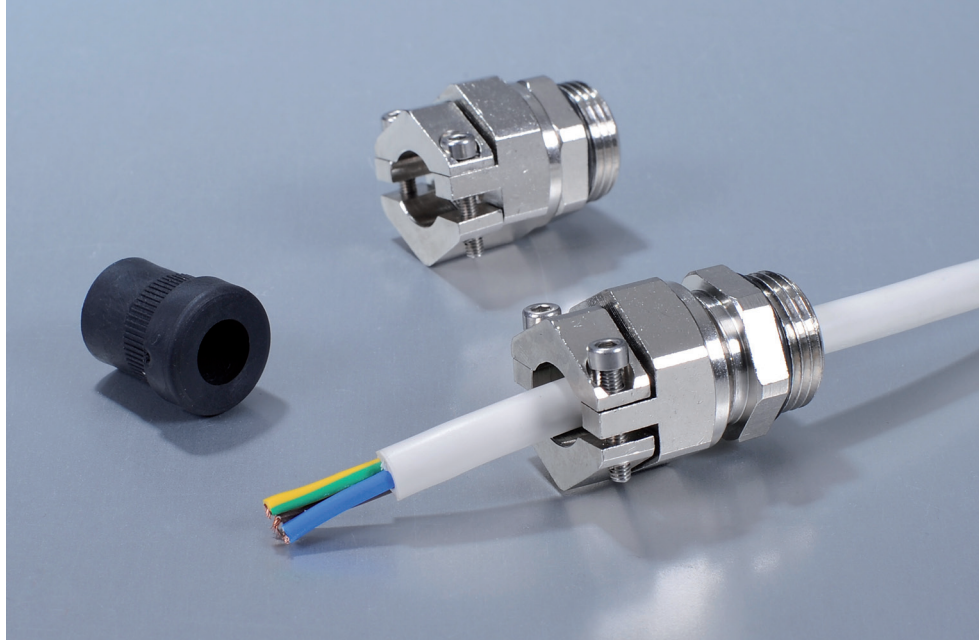
## Pressacavi anti torsione in ottone nichelato Strain relief cable glands nickel plated

Pressacavi in ottone nichelato con gommino di serraggio in TPE e anello "O" ring sulla filettatura. **Viti di serraggio acciaio inox AISI 304.**

Strain relief brass cable glands nickel plated with TPE insert and "O" ring on thread. **Stainless steel AISI 304 locking screws.**



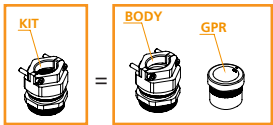
Diametro ganasce serrate  
Cross section locked jaws



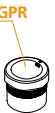
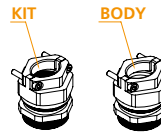
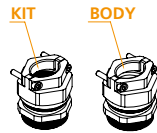
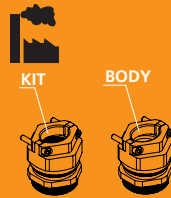
Grado di protezione: IP 68  
IP Rating: IP 68

Le particolari ganasce di questi pressacavi oltre a garantire una eccezionale tenuta a trazione del cavo evitano la possibilità di torsione del cavo stesso.

The particular design of the jaws guarantee an excellent strain relief of the cable avoiding jerking movements.



### Applicazione Application



### PRAT - Pressacavi industriali antitorsione in ottone nichelato

GAS CODICE KIT	GAS CODICE BODY	F Filetto GAS	A mm	OD1-OD2 mm	SP1-SP2 mm	Confez. standard KIT	PG CODICE KIT	PG CODICE BODY	F Filetto PG	A mm	OD1-OD2 mm	SP1-SP2 mm	Confez. standard KIT	METRICO CODICE KIT	METRICO CODICE BODY	F Filetto ISO Metr.	A mm	OD1-OD2 mm	SP1-SP2 mm	Confez. standard KIT	B mm	Ø cavo mm Min. Max.	Colore gommino	Codice Gommino
PRAT01211	CPRAT012	1/2"	9	26-27	24	20	PRAT1311	CPRAT013	13,5	6,5	24-27	22-24	20	PRATM2011	CPRATM20	M20x1,5	8	24-27	22-24	20	9,1	7 - 10,5	verde - green	GPR01311
PRAT01213							PRAT1313							PRATM2013									9 - 13	rosso - red
PRAT03413	CPRAT034	3/4"	10	32,5-29	30-26	10	PRAT1613	CPRAT016	16	6,5	26,5-29	24-26	20	PRATM2513	CPRATM25	M25x1,5	9	30-29	28-26	20	10,5	11,5 - 15,5	rosso - red	GPR01613
PRAT03416							PRAT1616							PRATM2516									14 - 18	bianco - white
PRAT03418	CPRAT34A	1"	11	38,5-33	35-30	10	PRAT2116	CPRAT021	21	7,5	32-33	30	10	PRATM2518	CPRATM25A	M25x1,5	9	33-29	30-26	10	13,1	17 - 20,5	blu - blue	GPA0318
PRAT03420							PRAT2120							PRATM2520									11,5 - 15,5	bianco - white
PRAT10016	CPRAT100	1"	11	38,5-33	35-30	10	PRAT2118	CPRAT021	21	7,5	32-33	30	10	PRATM3216	CPRATM32	M32x1,5	10	37,5-33	35-30	10	13,1	14 - 18	blu - blue	GPR02118
PRAT10018							PRAT2120							PRATM3220									17 - 20,5	marrone - brown
PRAT10020	CPRAT100A	1"	11	38,5-33	35-30	10	PRAT2920	CPRAT029	29	9,25	43-44,5	40	10	PRATM3225	CPRATM32A	M32x1,5	10	43-44,5	40	19,5	19,5	20 - 25	arancione - orange	GPA0725
PRAT10025							PRAT2928							PRATM3228									17 - 20,5	marrone - brown
PRAT11430	CPRAT114	1 1/4"	9	48-50	45	5								PRATM4020	CPRATM40	M40x1,5	10	47-44,5	42-40	10	19,5	20 - 25	arancione - orange	GPR02925
PRAT11232	CPRAT112	1 1/2"	9	55-56	50	5	PRAT3632	CPRAT036	36	9	55-56	50	5	PRATM4028	CPRATM40A	M40x1,5	10	48-50	45	5	21,5	26 - 30	giallo chiaro - light yellow	GPR02928
PRAT11234							PRAT3634							PRATM4030									24 - 28	bianco - white
PRAT11236							PRAT3636							PRATM5032	CPRATM50	M50x1,5	12	57-56	52-50	5	24	27 - 32	antracite - anthracite	GPR03632
PRAT20044	CPRAT200	2"	10	70	64	2	PRAT4844	CPRAT048	48	10	70	64	2	PRATM5034									PRATM5036	M50x1,5
														PRATM6344	CPRATM63	M63x1,5	10	70	64	2	39,5	39 - 44	bianco - white	GPR03636

### PRAT - Industrial strain relief cable glands made of brass nickel plated



Esempio d'ordine KIT / KIT Order example: **PRATM2516**

<b>PRAT</b>	Pressacavo anti torsione in ottone nichelato - Strain relief cable gland brass nickel plated
<b>M</b>	Filettatura ISO metrico - ISO metric thread
<b>25</b>	Dimensione Filetto - Thread dimension
<b>16</b>	Passaggio cavo 11,5-15,5 / Cable range 11,5-15,5