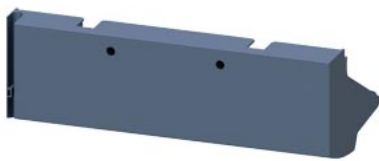




copertura connessioni per 3RW55 grandezza costruttiva 5



denominazione del prodotto	Copertura connessioni
designazione del tipo di prodotto	3RW59
n. di articolo del produttore del softstarter	<a href="#">3RW555</a>

Dati tecnici generali	
Direttiva RoHS (data)	02/15/2018
Peso netto per UQ	1,273 kg
Condizioni ambientali	
temperatura ambiente durante l'immagazzinaggio	-40 ... +80 °C

Approvazioni Certificati		
Environment	General Product Approval	EMV

[Environmental Confirmations](#)



For use in hazardous locations	Maritime application	other
--------------------------------	----------------------	-------

[Miscellaneous](#)



[Confirmation](#)

other



### Ulteriori informazioni

Informazioni sull'imballaggio  
<https://support.industry.siemens.com/cs/ww/it/view/109813875>  
 Information for data generation and storage  
<https://support.industry.siemens.com/cs/ww/en/view/109995012>

Information- and Downloadcenter (Cataloghi, Opuscoli,...)

<https://www.siemens.com/ic10>

Industry Mall (sistema di ordinazione Online)

<https://mall.industry.siemens.com/mall/it/it/Catalog/product?mlfb=3RW5955-0TC20>

Service&Support (Manuali, Certificati, Caratteristiche, FAQ, ...)

<https://support.industry.siemens.com/cs/ww/it/ps/3RW5955-0TC20>

Banca dati immagini (foto prodotto, disegni dimensionali 2D, modelli 3D, schemi delle connessioni, macro EPLAN...)

[https://www.automation.siemens.com/bilddb/cax\\_de.aspx?mlfb=3RW5955-0TC20&lang=en](https://www.automation.siemens.com/bilddb/cax_de.aspx?mlfb=3RW5955-0TC20&lang=en)

Generatore CAx online

<https://support.automation.siemens.com/WW/CAxorder/default.aspx?lang=en&mlfb=3RW5955-0TC20>

Curve caratteristiche

[https://curves.simaris.siemens.com/curves/<mmp\\_prod\\_noCOMP="HAUPT"></mmp\\_prod\\_no>](https://curves.simaris.siemens.com/curves/<mmp_prod_noCOMP=)

Caratteristica: Comportamento di sgancio, I<sup>t</sup>, Corrente di interruzione limitata

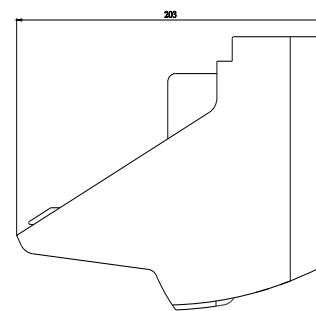
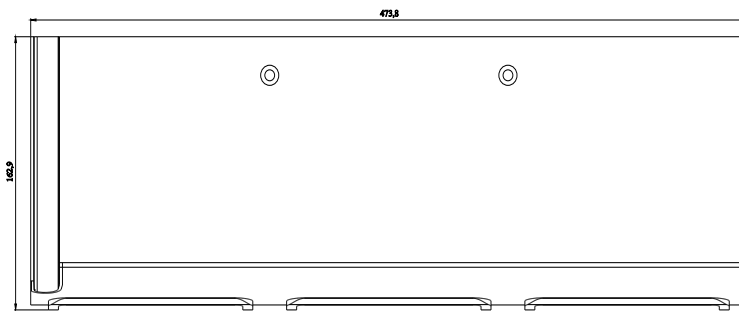
<https://support.industry.siemens.com/cs/ww/en/ps/3RW5955-0TC20/char>

Curve caratteristiche: Altitudine di installazione

[https://www.automation.siemens.com/bilddb/index.aspx?gridview=view2&objkey=G\\_NSB0\\_XX\\_01704&showdetail=true&view=Search](https://www.automation.siemens.com/bilddb/index.aspx?gridview=view2&objkey=G_NSB0_XX_01704&showdetail=true&view=Search)

Simulation Tool for Soft Starters (STS)

<https://support.industry.siemens.com/cs/ww/en/view/101494917>



Ultima modifica:

02/04/2025 

