

Product End of Life Instructions

Exiway Smartbeam EVAC SATI Recessed Black

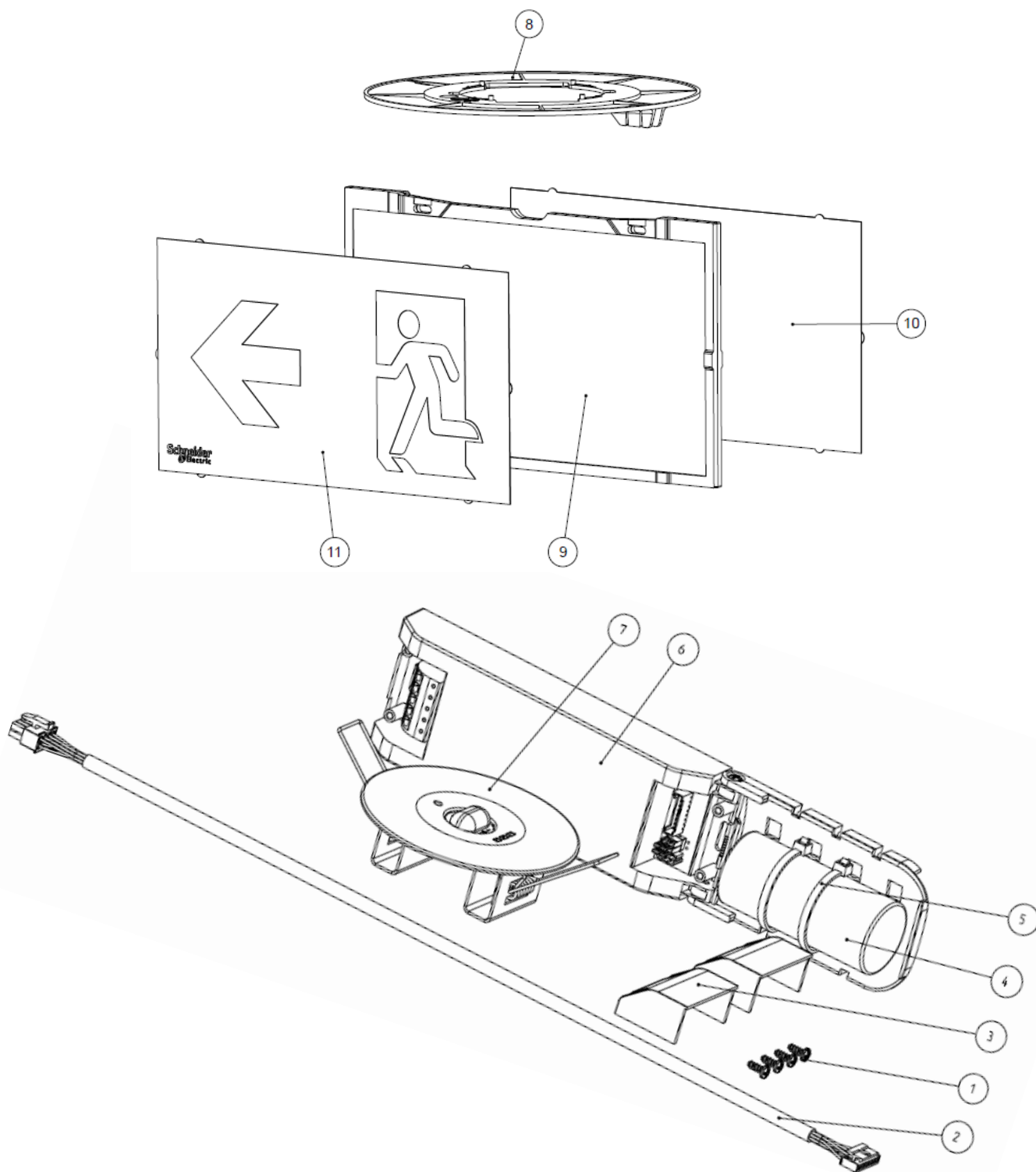




Potential disassembly risks



End of Life Instructions



Recommendation	Number on drawing	Component / Material	Weight (in g)	Comment
To be depolluted	1	Steel (Screws)	0.5	
To be depolluted	2	Electronic component (Lens supply cable)	18	
To be dismantled	3	PC (Coverage)	17	
To be depolluted	4	Battery Lithium iron phosphate (LiFePO4) (BATT.LFP1IFR26650 3,2V3,2AH+N LCF3)	22	
To be dismantled	5	PC(Cable tie)	1	
To be dismantled	6	PC (Body)	65	
To be depolluted	7	Lens	1.5	
To be dismantled	8	PC (Picto support)	27	
To be dismantled	9	PMMA (Picto screen)	100	
To be dismantled	10	PE (Green Picto)	10	
To be dismantled	11	PE (White Picto)	10	

Product description

Manufacturer identification	Schneider Electric Industries SAS
Brand name	Schneider Electric
Product function	Non Maintained Emergency Luminaire compliant to EN 60598-2-22 and NF C71:800
Product reference	OVA59106B
Additional similar product references	OVA59106B
Total representative product mass	430 g
Representative product dimensions	90 x 32 x 135 mm
Date of information release	12/2025



Additional information

Legal information	<p>This product family is in the scope of European Union directive 2012/19/EU on Waste Electrical and Electronic Equipment (WEEE). The product family must be disposed according to the legislation of the country. This document is intended for use by end of life recyclers or treatment facilities. It provides the basic information to assure an appropriate end of life treatment for the components and materials of the product.</p>	
Recyclability potential	70%	<p>Recyclability rate has been calculated based on REEECY'LAB tool developed by Ecosystem, for components/materials not covered by the tool, data from the "ECO'DEEE recyclability and recoverability calculation method" was taken. If no data was found a conservative assumption was used (0% recyclability).</p>

Schneider Electric Industries SAS

Country Customer Care Center
<http://www.se.com/contact>

35, rue Joseph Monier
 CS 30323

F- 92500 Rueil Malmaison Cedex

RCS Nanterre 954 503 439
 Capital social 928 298 512 €

www.se.com

ENVEOLI2511042_V1

Published by Schneider Electric

© 2023 - Schneider Electric – All rights reserved

12/2025