

# Product End of Life Instructions

## EXW-SMARTBEAM-SO IP65 AD3 L6V/SA/3LFP

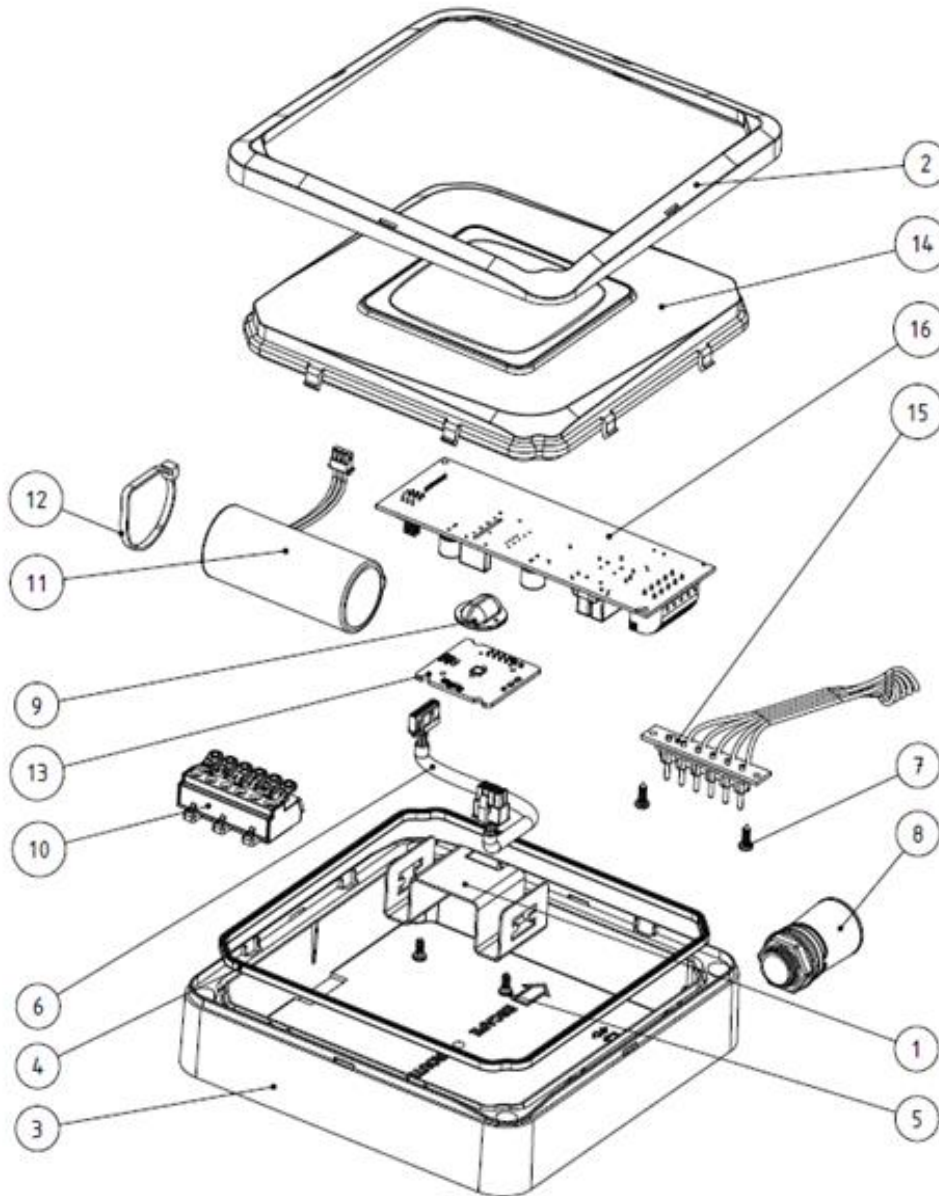




## Potential disassembly risks



## End of Life Instructions



Recommendation	Number on drawing	Component / Material	Weight (in g)	Comment
To be dismantled	1	Steel (LED support)	30	
To be dismantled	2	PC (Body closer)	20	
To be dismantled	3	PC (Body)	175	
To be dismantled	4	ABS Acrylonitrile Butadiene Styrene ABS (Gasket)	1.5	
To be dismantled	5	Steel (Screw)	2	
To be depolluted	6	Electronic Board (Power) > 10cm <sup>2</sup> (Cable )	5.3	
To be dismantled	7	Steel (Screw)	2	
To be dismantled	8	PC (Cable gland)	9	
To be depolluted	9	Electronic Board (Power)> 10cm <sup>2</sup> (Lens)	7	
To be dismantled	10	PA (Connector)	18	
To be depolluted	11	LiFePO Battery	92	
To be dismantled	12	PC (Battery band)	3	
To be depolluted	13	Electronic Board (Power)> 10cm <sup>2</sup> (LED)	7	
To be dismantled	14	PC (reflective screen)	40	
To be depolluted	15	Electronic Board (Power)> 10cm <sup>2</sup> (Connector pins)	5	
To be depolluted	16	Electronic Board (Power)> 10cm <sup>2</sup> (PCBA)	120	

## Product description

Manufacturer identification	Schneider Electric Industries SAS
Brand name	Schneider Electric Industries SAS
Product function	Maintained and Non Maintained emergency luminaire (EN 60598-2-22). Luminaire in which the emergency lighting lamps are energized at all times when normal or emergency lighting is required.
Product reference	OVA48985
Additional similar product references	OVA48985 OVA48984
Total representative product mass	520 g
Representative product dimensions	176mm x 176mm x 53.5mm
Date of information release	06/2025



## Additional information

Legal information	This product family is in the scope of European Union directive 2012/19/EU on Waste Electrical and Electronic Equipment (WEEE). The product family must be disposed according to the legislation of the country. This document is intended for use by end of life recyclers or treatment facilities. It provides the basic information to assure an appropriate end of life treatment for the components and materials of the product.
Recyclability potential	<b>65%</b> The recyclability rate was calculated from the recycling rates of each material making up the product based on REEECY'LAB tool developed by Ecosystem, for components/materials not covered by the tool, data from the EIME database and the related PSR was taken. If no data was found a conservative assumption was used (0% recyclability).

Schneider Electric Industries SAS

Country Customer Care Center  
<http://www.se.com/contact>

35, rue Joseph Monier  
CS 30323

F- 92500 Rueil Malmaison Cedex  
RCS Nanterre 954 503 439  
Capital social 928 298 512 €

[www.se.com](http://www.se.com)

ENVEOLI2504034\_V1

Published by Schneider Electric

© 2023 - Schneider Electric – All rights reserved

06/2025