

# Product End of Life Instructions

## PM8000 Series Integrated Power Meter





## Potential disassembly risks

The information provided in this document assumes that the product is completely de-energized and uninstalled (refer to the instructions provided in the appropriate product manuals).

Dismantling/disassembling the product may entail hazards caused by, for example, sharp edges, chemical aggression or ejected parts.

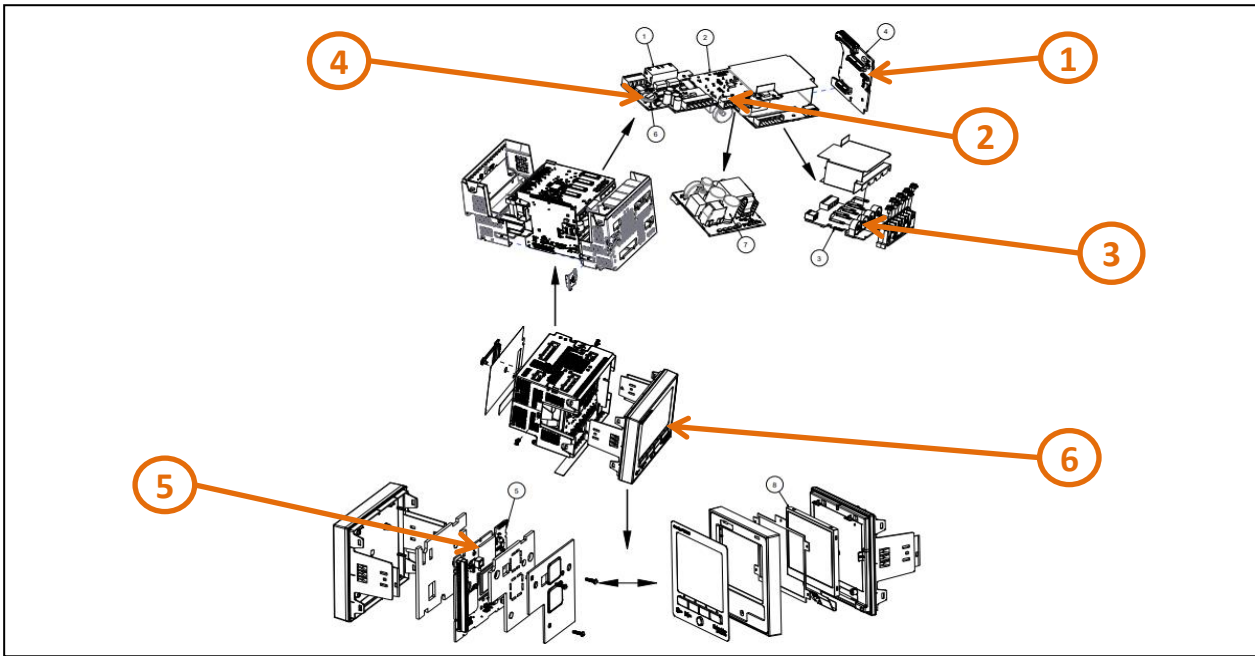
### ⚠ WARNING

#### HAZARD DUE TO INSUFFICIENT PROTECTION

- Implement all safety measures required by the applicable regulations and by the processes used to dismantle/disassemble and dispose of the product.
  - Use all necessary personal protective equipment such as gloves and goggles.
- Failure to follow these instructions can result in death or serious injury.**



## End of Life Instructions



Recommendation	Number on drawing	Component / Material	Weight (in g)	Comment
To be depolluted	1	PCB, COMM I/O, PM8000	51.76	Including all soldering parts
To be depolluted	2	PCB, PSU, PM8000	131.05	Including all soldering parts
To be depolluted	3	PCB, BACK PLANE, INT, PM8000	26.63	Including all soldering parts
To be depolluted	4	PCB, ANALOGUE, PM8000	66.74	Including all soldering parts
To be depolluted	5	PCB, CPU, PM8000, LATTICE	46.45	Including all soldering parts
To be depolluted	6	TFT LCD 320x240 TFT	119.57	Including all soldering parts



## Product description

Manufacturer identification	Schneider Electric Industries SAS
Brand name	Schneider Electric
Product function	The PowerLogic PM8140 comes in a flush mount form factor with integrated display. It is designed to help you ensure reliability and efficiency of your power-critical facility. With its modular, flexible, and power ION technology, you can build custom applications for each meter. It comes with revenue grade accuracy, multiple communication ports, and a color graphical display. Certified by third party labs for Class 0.2S energy accuracy (IEC62052-11, IEC62053-24, IEC62053-22). Cybersecurity features include secure protocols (HTTPs, sFTP, Secure ION), security event logging, Syslog protocol. Ability to enable/disable communication ports and support 50 configurable user account to help manage access. With 64MB of memory to support up to 10 data logs (160 channels), 50+ user-definable alarms, waveform captures upto 128 samples/cycle, 1/2 cycle RMS logging. The storage can also be used for custom web pages, min/max logs, energy trends, and Time of Use. The ability to timestamp events to +/-1ms utilizing time synchronization. Time synch method that include PTP (IEEE1588), NTP, IRIG-B, GPS ASCII (RS485) and network time set function. 3 digital inputs and one digital output, plus the ability to add up to 4 option modules. I/O option modules include 2 relays and 6 digital inputs or 2 analog outputs and 4 analog inputs Wide control power range of 90-415 VAC / 110-415 VDC. Operating environment of -25 to +70°C; Humidity rating of 5% to 95%; Altitude up to 3000 m.
Product reference	METSEPM8140
Additional similar product references	METSEPM8140 METSEPM83404 METSEPM83401 METSEPM8340 METSEPM8310 METSEPM8210 METSEPM82101 METSEPM8240 METSEPM82401 METSEPM82403 METSEPM82404 METSEPM8240DEMO METSEPM8280 METSEPM8180 METSEPM8380 METSEPM81404 METSEPM81401 METSEPM8110 BATT-REPLACE-8XXX METSEPM82402 METSEPM8000SK METSEPM8DCHWK METSEPM8HWK
Total representative product mass	581 g
Representative product dimensions	96mm x 96mm x 92mm
Date of information release	2025-09



## Additional information

Legal information	This product family is in the scope of European Union directive 2012/19/EU on Waste Electrical and Electronic Equipment (WEEE). The product family must be disposed according to the legislation of the country. This document is intended for use by end of life recyclers or treatment facilities. It provides the basic information to assure an appropriate end of life treatment for the components and materials of the product.
Recyclability potential	<b>17%</b> The recyclability rate was calculated from the recycling rates of each material making up the product based on REEECYLAB tool developed by Ecosystem, for components/materials not covered by the tool, data from the EIME database and the related PSR was taken. If no data was found a conservative assumption was used (0% recyclability).

Schneider Electric Industries SAS

Country Customer Care Center  
<http://www.se.com/contact>

35, rue Joseph Monier

CS 30323

F- 92500 Rueil Malmaison Cedex

RCS Nanterre 954 503 439

Capital social 928 298 512 €

[www.se.com](http://www.se.com)

Published by Schneider Electric

ENVEOLI2508020\_V1

© 2023 - Schneider Electric – All rights reserved

2025-09