

Product End of Life Instructions

PM5100/PM5300 Series Power and Energy Meter





Potential disassembly risks

The information provided in this document assumes that the product is completely de-energized and uninstalled (refer to the instructions provided in the appropriate product manuals).

Dismantling/disassembling the product may entail hazards caused by, for example, sharp edges, chemical aggression or ejected parts.

⚠ WARNING

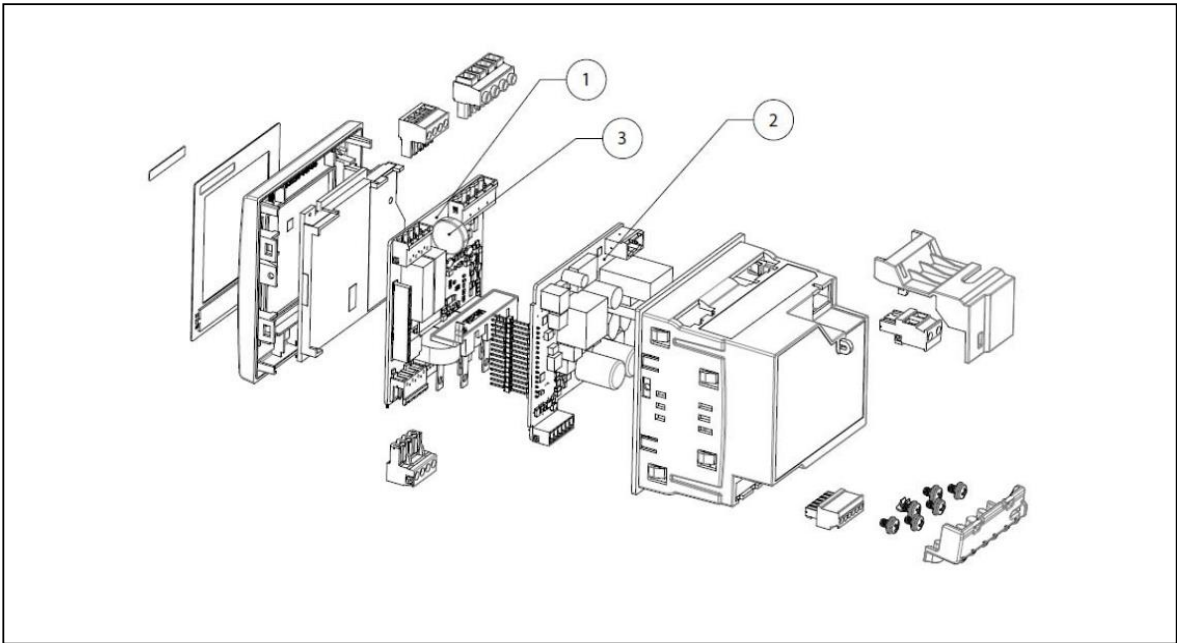
HAZARD DUE TO INSUFFICIENT PROTECTION

- Implement all safety measures required by the applicable regulations and by the processes used to dismantle/disassemble and dispose of the product.
- Use all necessary personal protective equipment such as gloves and goggles.

Failure to follow these instructions can result in death or serious injury.



End of Life Instructions



Recommendation	Number on drawing	Component / Material	Weight (in g)	Comment
To be dismantled	1	Printed circuit boards	74.1	AKBAR-53XX-POWERSUPPLY
To be dismantled	2	Printed circuit boards	20.4	AKBAR-53XX-RS485-RELAY
To be dismantled	3	Poly-carbonmonofluorid Lithium coin battery	1.5	BAT POLY CF BTN 31/A*kg*m**2/s**3 120mAh

Product description

Manufacturer identification	Schneider Electric Industries SAS
-----------------------------	-----------------------------------

Brand name	Schneider Electric
Product function	The device is a flush-mount energy meter with Class 0.5S accuracy, 64 samples per cycle, and a 96mm by 96mm backlit LCD display. It measures Energy, Active/Reactive Power, Voltage, Current, Frequency, Power Factor, and up to the 31st Harmonic. It has 256kB memory for fixed parameters, operates in 50Hz or 60Hz networks, and accepts 100-415VAC and 125-250VDC. It supports 1A or 5A input, Single Phase, Three Phase, or Three Phase and Neutral configurations. The communication protocol is Modbus RTU and ASCII 2 wires with RS485 port support, and it includes two digital inputs/outputs and dual relay outputs.
Product reference	METSEPM5330
Total representative product mass	420 g
Representative product dimensions	96 x 96 x 92 mm
Accessories	NA
Date of information release	05-2025

Additional information

Legal information	This product family is in the scope of European Union directive 2012/19/EU on Waste Electrical and Electronic Equipment (WEEE). The product family must be disposed according to the legislation of the country. This document is intended for use by end of life recyclers or treatment facilities. It provides the basic information to assure an appropriate end of life treatment for the components and materials of the product.
In case of special transportation: transportation method	NA
Recyclability potential	<p>4%</p> <p>The recyclability rate was calculated from the recycling rates of each material making up the product based on REEECY'LAB tool developed by Ecosystem, for components/materials not covered by the tool, data from the EIME database and the related PSR was taken. If no data was found a conservative assumption was used (0% recyclability).</p>

Schneider Electric Industries SAS

Country Customer Care Center
<http://www.se.com/contact>

35, rue Joseph Monier
 CS 30323
 F- 92500 Rueil Malmaison Cedex
 RCS Nanterre 954 503 439
 Capital social 928 298 512 €

www.se.com

ENVEOLI1305025_V3

Published by Schneider Electric

© 2023 - Schneider Electric – All rights reserved

05-2025