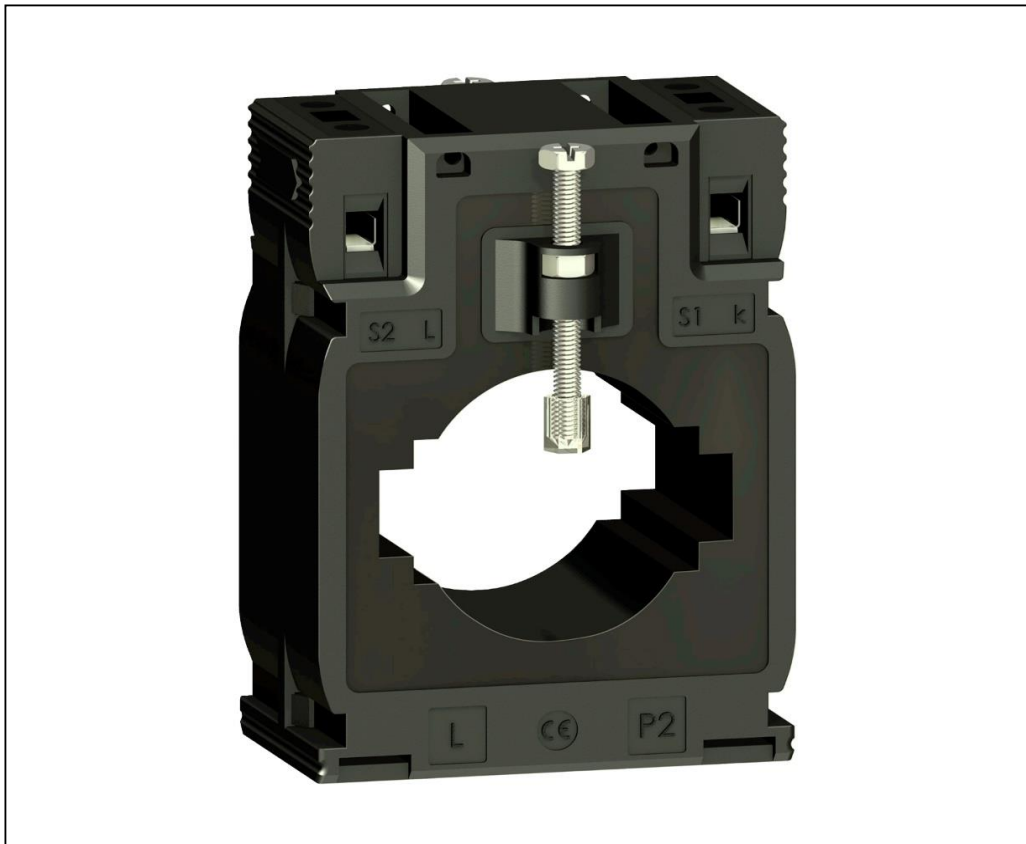


Product End of Life Instructions

PowerLogic™ Solid-Core Current Transformer – 800A/5A (Cable & Busbar Applications)





Potential disassembly risks

WARNING

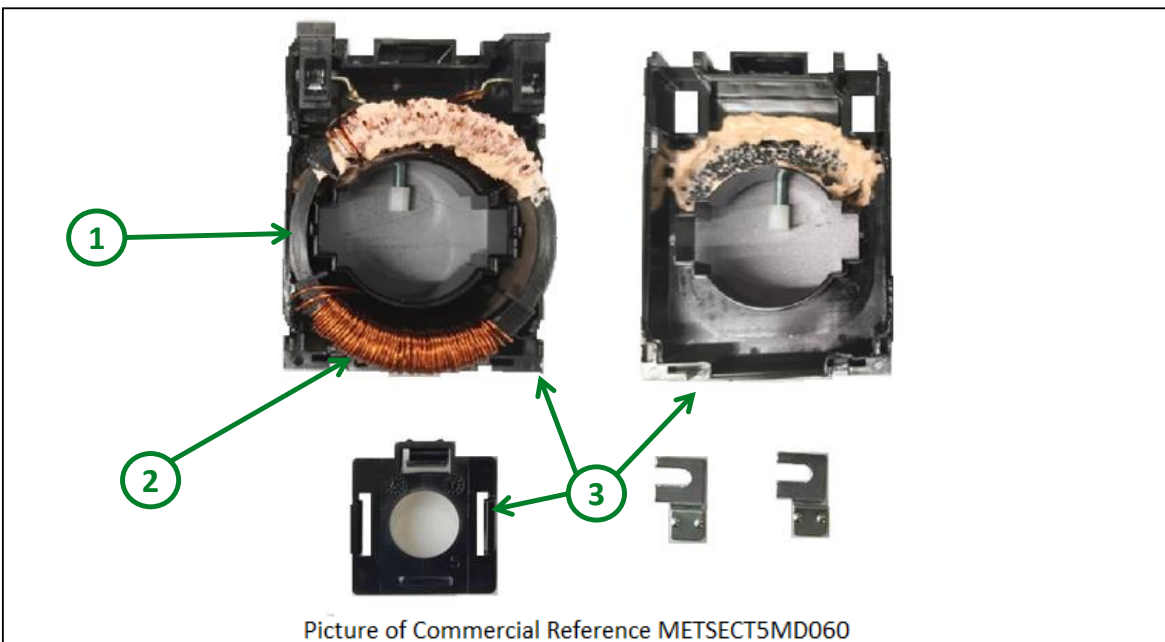
HAZARD OF ELECTRIC SHOCK, EXPLOSION, OR ARC FLASH

- Wear your personal protective equipment (PPE) and comply with the safe electrical work practices.
- This equipment must only be installed and serviced by qualified electrical personnel.
- Turn off all power supplying equipment before working on or inside the equipment.
- Product may use multiple voltage/power sources. Disconnect ALL sources before servicing.
- Use a properly rated voltage sensing device to confirm that power is off. DO NOT depend on this product for voltage indication.
- Current transformer secondaries must be shorted or connected to a low burden at all times.
- Restrict the installation of current transformers in an area where it would block ventilation openings.
- Not suitable for Class 2 wiring methods and Not intended for connection to Class 2 equipment.

Failure to follow these instructions will result in death or serious injury.



End of Life Instructions



Recommendation	Number on drawing	Component / Material	Weight (in g)	Comment
To be dismantled	1	Core	122.7	
To be dismantled	2	Copper Wire	113.8	
To be dismantled	3	Housing	73.86	

Product description

Manufacturer identification	Schneider Electric Industries SAS
Brand name	Schneider Electric
Product function	The METSECT5MD080 is a tropicalised current transformer designed for both busbar and cable applications, with a primary (line) current rating of 800 A and a secondary current output of 5 A. It supports cables with an outer diameter up to 40 mm and is compatible with busbars sized 50 x 10 mm or 40 x 20 mm.
Product reference	METSECT5MD080
Total representative product mass	369 g
Representative product dimensions	Width 70mm * Height 95mm * Depth 65mm
Date of information release	11-2025

Additional information

Legal information	This product family is in the scope of European Union directive 2012/19/EU on Waste Electrical and Electronic Equipment (WEEE). The product family must be disposed according to the legislation of the country. This document is intended for use by end of life recyclers or treatment facilities. It provides the basic information to assure an appropriate end of life treatment for the components and materials of the product.
Recyclability potential	<p>71%</p> <p>The recyclability rate was calculated from the recycling rates of each material making up the product based on REEECY'LAB tool developed by Ecosystem, for components/materials not covered by the tool, data from the EIME database and the related PSR was taken. If no data was found a conservative assumption was used (0% recyclability).</p>

Schneider Electric Industries SAS
Country Customer Care Center
<http://www.se.com/contact>
35, rue Joseph Monier
CS 30323
F- 92500 Rueil Malmaison Cedex
RCS Nanterre 954 503 439
Capital social 928 298 512 €

www.se.com

ENVEOLI2511010_V1

Published by Schneider Electric

© 2023 - Schneider Electric – All rights reserved

11-2025