

Product End of Life Instructions

I/O (input/output) application module, Enerlin'X





Potential disassembly risks

⚠ WARNING

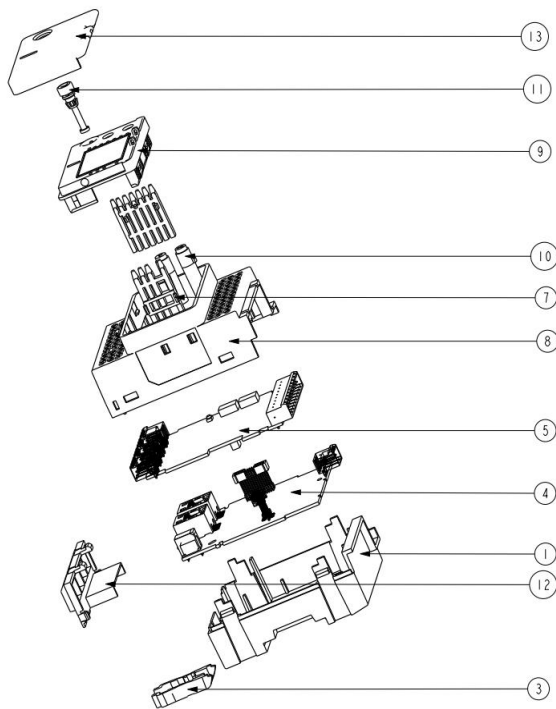
HAZARD OF ARC FLASH OR FIRE

- Disconnect battery terminals before disassembly
- Avoid any electrical connection between the terminals

Failure to follow these instructions can result in death or serious injury.



End of Life Instructions



Recommendation	Number on drawing	Component / Material	Weight (in g)	Comment
To be depolluted	4 & 5	PCBA	105.49	Electronic Boards

Product description

Manufacturer identification	Schneider Electric Industries SAS
Brand name	Schneider Electric
Product function	This I/O module is an Input/Output application module and it is part of Enerlin'X communication system. This I/O module is compatible with Masterpact, Compact and PowerPact devices. It is used for protection, circuit breaker control, motor control, energy management and monitoring applications. It provides six digital inputs, three digital outputs and one analog input. It is equipped on the top with one 24VDC screw clamp terminal block and one terminal block for the 6 digital inputs. There are two RJ45 sockets on the bottom for ULP, and 4 terminal blocks for the digital outputs and analog input. The I/O module is a DIN rail mounting device and its dimensions are 72mm x 116mm x 71mm. The protection degree is IP4x on the front face and IP2x on the connectors. The I/O module is entirely part of the EcoStruxure Power architecture and Ethernet ready smart panels. The I/O module can be configured and updated (firmware) using EcoStruxure Power Commission software.
Product reference	LV434063
Total representative product mass	232.5 g
Representative product dimensions	72mm x 116mm x 71mm
Accessories	N/A
Date of information release	06-2025

Additional information

Legal information	This product family is in the scope of European Union directive 2012/19/EU on Waste Electrical and Electronic Equipment (WEEE). The product family must be disposed according to the legislation of the country. This document is intended for use by end of life recyclers or treatment facilities. It provides the basic information to assure an appropriate end of life treatment for the components and materials of the product.
In case of special transportation: transportation method	N/A
Recyclability potential	0% The recyclability rate was calculated from the recycling rates of each material making up the product based on REEECYLAB tool developed by Ecosystem, for components/materials not covered by the tool, data from the EIME database and the related PSR was taken. If no data was found a conservative assumption was used (0% recyclability).

Schneider Electric Industries SAS

Country Customer Care Center

<http://www.se.com/contact>

35, rue Joseph Monier

CS 30323

F- 92500 Rueil Malmaison Cedex

RCS Nanterre 954 503 439

Capital social 928 298 512 €

www.se.com

ENVEOLI2411031_V1

Published by Schneider Electric

© 2023 - Schneider Electric – All rights reserved

06-2025