

Product End of Life Instructions

TESYS Tera Operator Control Unit (HMI)





Potential disassembly risks

⚠ WARNING

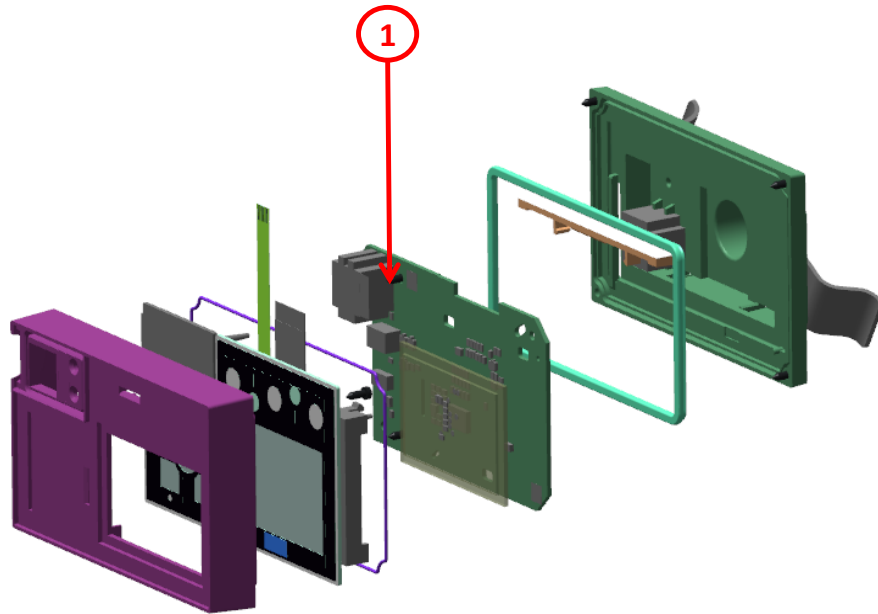
HAZARD OF PARTS EJECTION OR HAND CRUSHING

- Trip the circuit breaker up to discharged state before disassembly.
- Observe instructions to disassemble the spring(s).

Failure to follow these instructions can result in death or serious injury.



End of Life Instructions



Recommendation	Number on drawing	Component / Material	Weight (in g)	Comment
Potential hazards	1	Electronic Board (Communication) > 10cm ²	55.25932	



Product description

Manufacturer identification	Schneider Electric Industries SAS
Brand name	Schneider Electric
Product function	Operator Control Unit (HMI) with fast device replacement service for the TeSys Tera product. Operates at 5Vdc and 140mA
Product reference	LTMTCUF
Total representative product mass	205 g
Representative product dimensions	69.5x116.4x53.5
Accessories	No
Date of information release	03-18-2025



Additional information

Legal information	This product family is in the scope of European Union directive 2012/19/EU on Waste Electrical and Electronic Equipment (WEEE). The product family must be disposed according to the legislation of the country. This document is intended for use by end of life recyclers or treatment facilities. It provides the basic information to assure an appropriate end of life treatment for the components and materials of the product.
In case of special transportation: transportation method	NO
Recyclability potential	18% The recyclability rate was calculated from the recycling rates of each material making up the product based on REEECY'LAB tool developed by Ecosystem, for components/materials not covered by the tool, data from the EIME database and the related PSR was taken. If no data was found a conservative assumption was used (0% recyclability).

Schneider Electric Industries SAS

Country Customer Care Center
<http://www.se.com/contact>

35, rue Joseph Monier

CS 30323

F- 92500 Rueil Malmaison Cedex

RCS Nanterre 954 503 439
 Capital social 928 298 512 €

www.se.com

ENVEOLI2503009_V1

Published by Schneider Electric

© 2023 - Schneider Electric – All rights reserved

03-2025