

Product End of Life Instructions

variable speed drive, Altivar Machine ATV320, 7.5kW, 380 to 500V, 3 phases, book

Altivar Machine ATV320





Potential disassembly risks

The information provided in this document assumes that the product is completely de-energized and uninstalled (refer to the instructions provided in the appropriate product manuals).

Dismantling/disassembling the product may entail hazards caused by, for example, sharp edges, chemical aggression or ejected parts.

⚠ WARNING

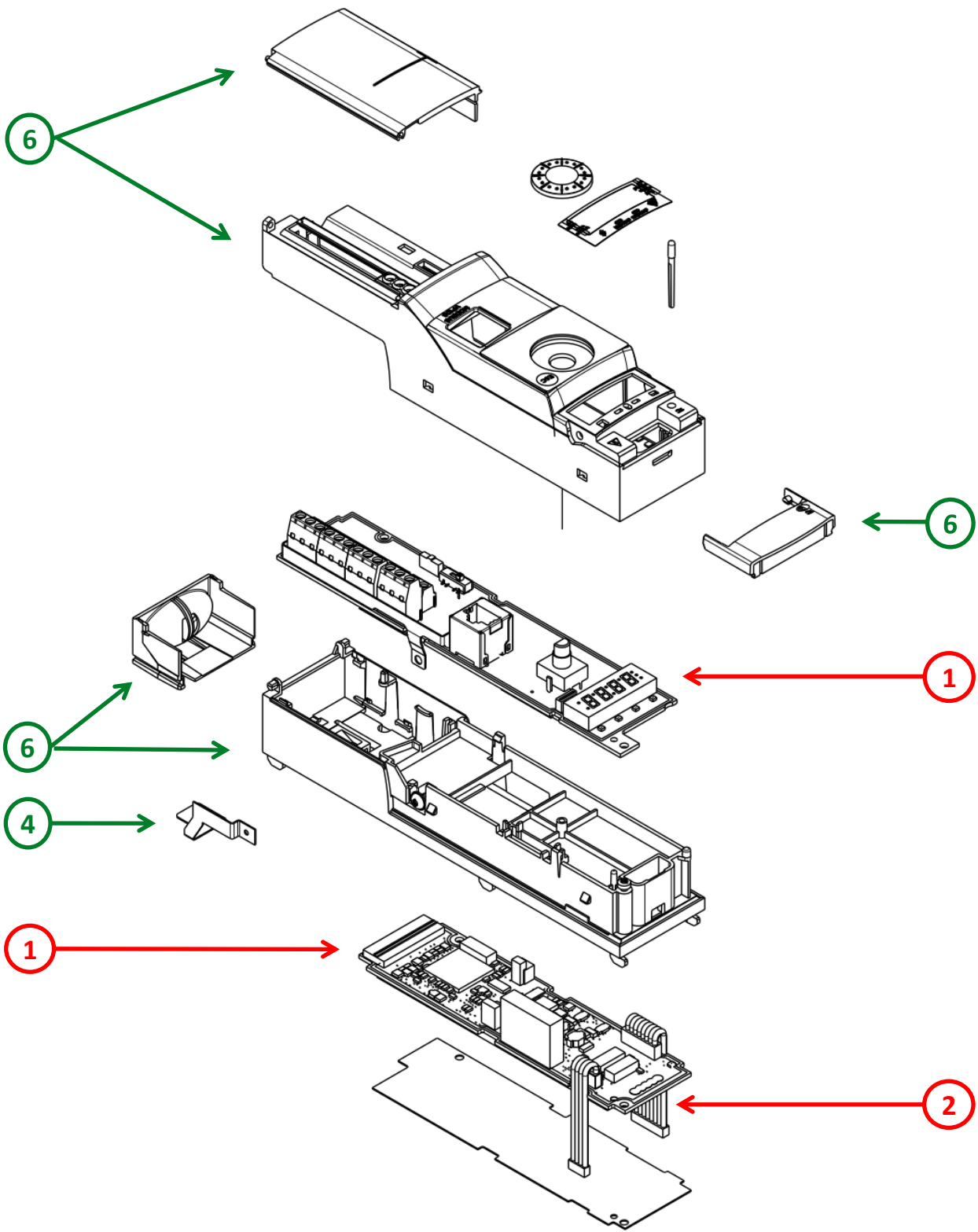
HAZARD DUE TO INSUFFICIENT PROTECTION

- Implement all safety measures required by the applicable regulations and by the processes used to dismantle/disassemble and dispose of the product.
- Use all necessary personal protective equipment such as gloves and goggles.

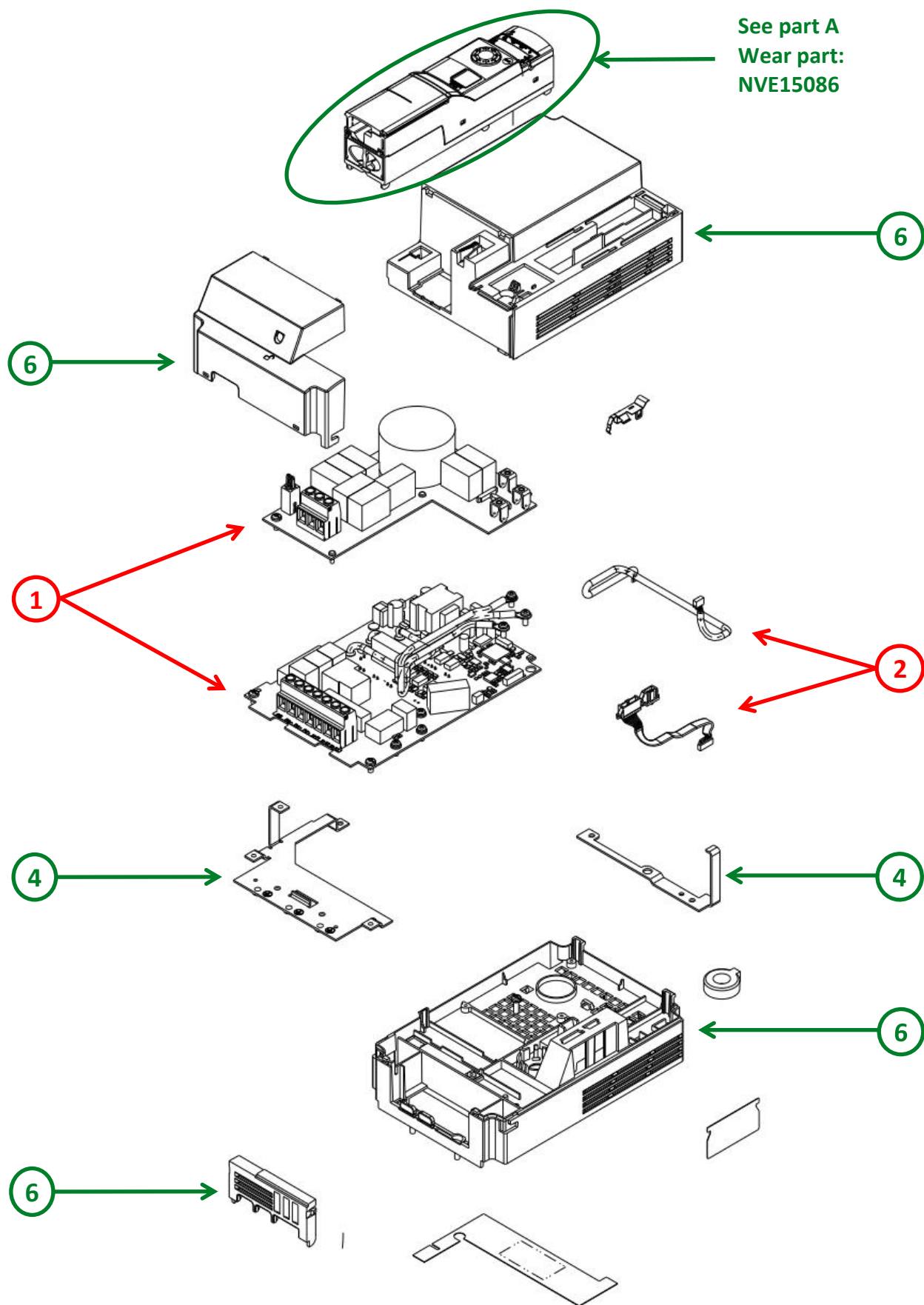
Failure to follow these instructions can result in death or serious injury.

End of Life Instructions

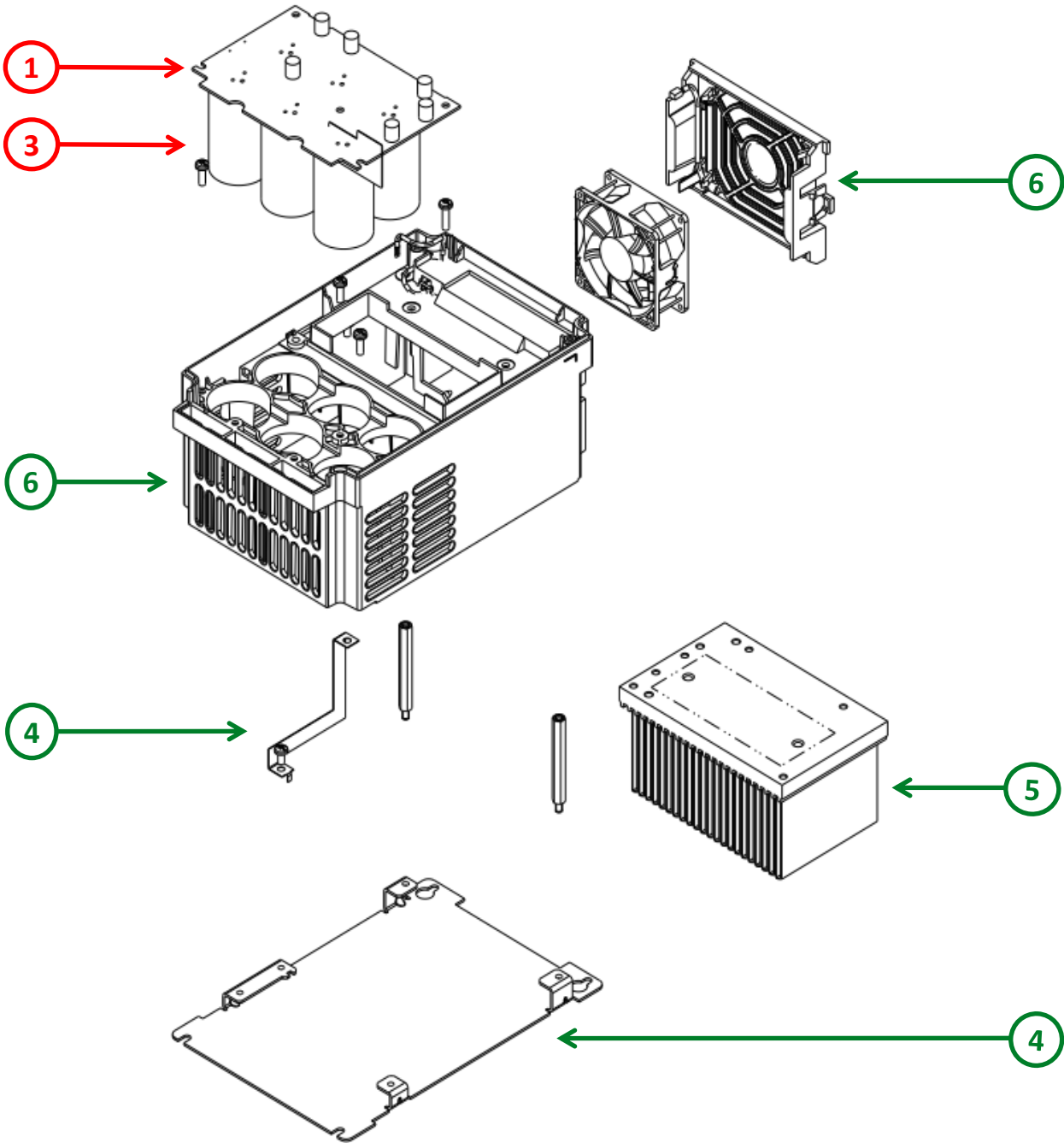
A



B



C



Recommendation	Number on drawing	Component / Material	Weight (in g)	Comment
To be depolluted	1	Electronic Board (Power and Communication) > 10cm²	1157	
To be depolluted	2	Cable (high current)	49	
To be depolluted	3	Electrolyte capacitors which size: height > 25 mm, diameter > 25 mm or proportionately similar volume	420	
To be dismantled	4	Steel	673	Ground Plate - Ground Bar - BasePlate - EMC Plate
To be dismantled	5	Aluminium	746	Heatsink
To be dismantled	6	PC, ABS-PC, PA, PA6, HDPE, SAN with or without additive, PP+EPDM and PP	1006	Fan Guard - Wiring Trap - Terminal Trap - Flash Trap - Housing - Cover - Option Trap - Control Support - Control Trap - Control Housing
Other			339	

Product description

Manufacturer identification	Schneider Electric Industries SAS
Brand name	Schneider Electric
Product function	The main function of the Altivar Machine product range is the speed control and variation of a synchronous, asynchronous or reluctance electric motor for fluid management and industrial applications.
Product reference	ATV320U75N4B
Total representative product mass	4,39 kg
Representative product dimensions	308mm x 150mm x 232mm
Accessories	No accessories needed
Date of information release	08-2025

Additional information

Legal information	The product family must be disposed according to the legislation of the country. This document is intended for use by end of life recyclers or treatment facilities. It provides the basic information to assure an appropriate end of life treatment for the components and materials of the product.
In case of special transportation: transportation method	No special transportation
Recyclability potential	61% The recyclability rate was calculated from the recycling rates of each material making up the product based on REEECY'LAB tool developed by Ecosystem, for components/materials not covered by the tool, data from the EIME database and the related PSR was taken. If no data was found a conservative assumption was used (0% recyclability).

Schneider Electric Industries SAS
Country Customer Care Center
<http://www.se.com/contact>
35, rue Joseph Monier
CS 30323
F- 92500 Rueil Malmaison Cedex
RCS Nanterre 954 503 439
Capital social 928 298 512 €

www.se.com

ENVEOLI1708004_V2

Published by Schneider Electric

© 2023 - Schneider Electric – All rights reserved

08-2025