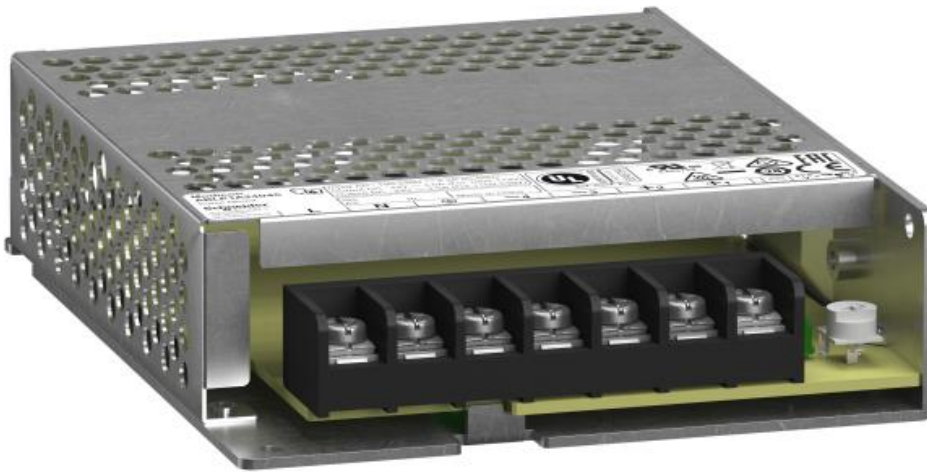


Product End of Life Instructions

Modicon regulated power supply, 100 to 240V AC

Modicon ABLP power supply



Schneider
Electric

Potential disassembly risks

⚠ WARNING

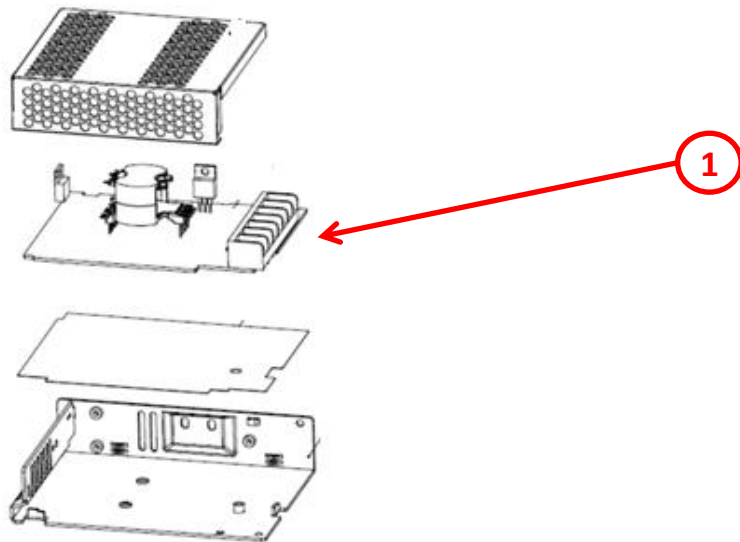
HAZARD OF ARC FLASH OR FIRE

- Disconnect battery terminals before disassembly
- Avoid any electrical connection between the terminals

Failure to follow these instructions can result in death or serious injury.



End of Life Instructions



Recommendation	Number on drawing	Component / Material	Weight (in g)	Comment
To be depolluted	1	Electronic Board (Power) > 10cm ²	146,4	
Other			163,6	

Product description

Manufacturer identification	Schneider Electric Industries SAS
Brand name	Schneider Electric
Product function	This Modicon ABLP regulated switch mode power supply (SMPS) supplies direct current voltage. It has a rated input of 100V to 240V AC, a rated output current of 4.5A at 24V DC and a rated power of 100W. It provides a protection against overloads and short-circuits with automatic restart after the source of overload/short-circuit has been corrected. It has LED diagnostics indicator available in the front for troubleshooting instantly.
Product reference	ABLP1A24045
Additional similar product references	ABLP1A12085 ABLP1A24062 ABLP1A24100
Total representative product mass	310 g
Representative product dimensions	30mm x 97mm x 129mm
Date of information release	18/09/2025

Additional information

Legal information	This product family is in the scope of European Union directive 2012/19/EU on Waste Electrical and Electronic Equipment (WEEE). The product family must be disposed according to the legislation of the country. This document is intended for use by end of life recyclers or treatment facilities. It provides the basic information to assure an appropriate end of life treatment for the components and materials of the product.
Recyclability potential	<p>The recyclability rate was calculated from the recycling rates of each material making up the product based on REEECY'LAB tool developed by Ecosystem, for components/materials not covered by the tool, data from the EIME database and the related PSR was taken. If no data was found a conservative assumption was used (0% recyclability).</p> <p>41%</p>

Schneider Electric Industries SAS

Country Customer Care Center
<http://www.se.com/contact>

35, rue Joseph Monier
 CS 30323
 F- 92500 Rueil Malmaison Cedex
 RCS Nanterre 954 503 439
 Capital social 928 298 512 €

www.se.com

ENVEOLI2007017_V2

Published by Schneider Electric

© 2023 - Schneider Electric – All rights reserved

18/09/2025