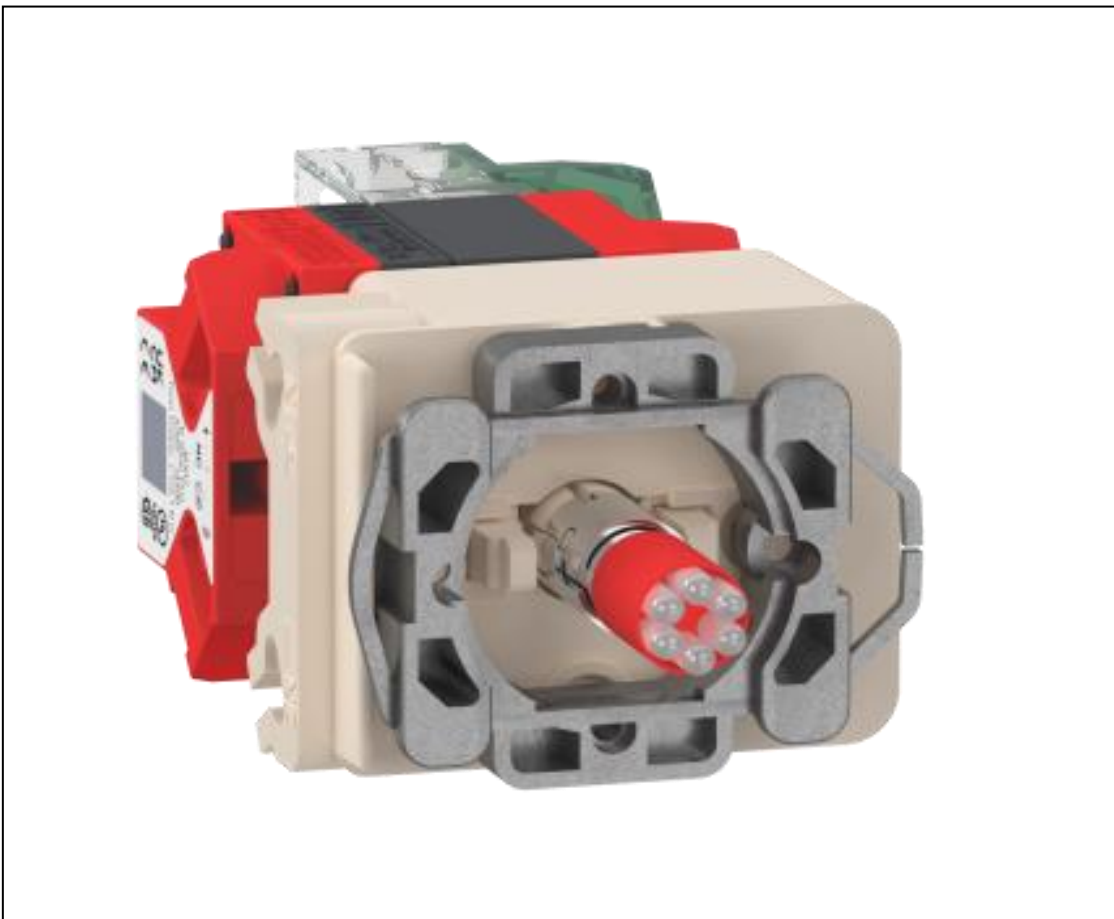


Product End of Life Instructions

Harmony ø30mm Emergency Stop Illuminated Body





Potential disassembly risks

CAUTION

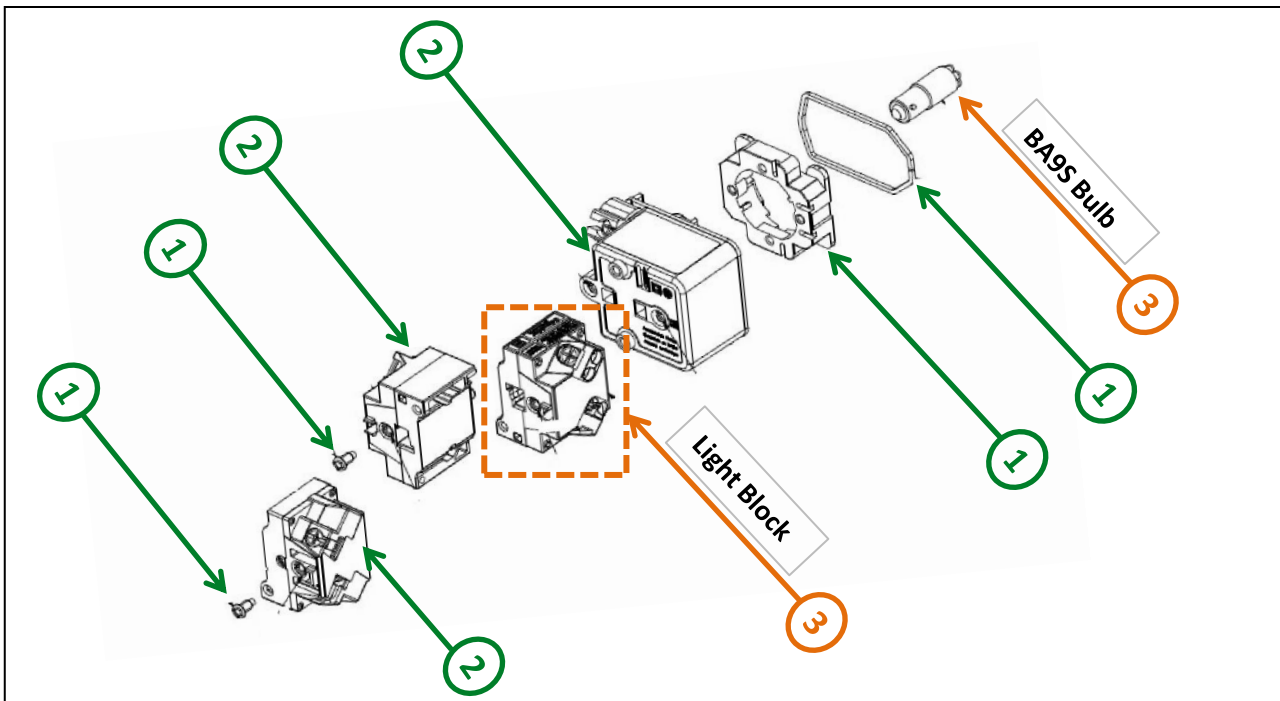
HAZARD OF PARTS WITH SHARP EDGES

Apply appropriate personal protective equipment (PPE) during disassembly.

Failure to follow these instructions can result in injury.



End of Life Instructions



Recommendation	Number on drawing	Component / Material	Weight (in g)	Comment
To be dismantled	1	Bezel, Screw, Terminal, Rivet, Clamp, Spring	76.6	Metal Parts
To be dismantled	2	Light Module Case, Housing Cover, Pusher Guide	76.18	Plastic Parts
To be depolluted	3	Bulb & Resistor	2.7	Electronic Components

Product description

Manufacturer identification	Schneider Electric Industries SAS
Brand name	Schneider Electric
Product function	This product is a subset of an emergency stop pushbutton without head which is used to immediately stop the any dangerous movements or processes without creating further hazards to persons that can arise from machinery when it cannot be shut down in the usual manner.
Product reference	9001KES18P35LRRES4
Total representative product mass	155.5 g
Representative product dimensions	H 115mm x L 41.5mm x D 54.8mm
Accessories	Not required any special accessories
Date of information release	03-2025

Additional information

Legal information	This product family is in the scope of European Union directive 2012/19/EU on Waste Electrical and Electronic Equipment (WEEE). The product family must be disposed according to the legislation of the country. This document is intended for use by end of life recyclers or treatment facilities. It provides the basic information to assure an appropriate end of life treatment for the components and materials of the product.
In case of special transportation: transportation method	No special transportation is required
Recyclability potential	50% The recyclability rate was calculated from the recycling rates of each material making up the product based on REEECY'LAB tool developed by Ecosystem, for components/materials not covered by the tool, data from the EIME database and the related PSR was taken. If no data was found a conservative assumption was used (0% recyclability).

Schneider Electric Industries SAS

Country Customer Care Center
<http://www.se.com/contact>

35, rue Joseph Monier

CS 30323

F- 92500 Rueil Malmaison Cedex

RCS Nanterre 954 503 439

Capital social 928 298 512 €

www.se.com

ENVEOLI2503027_V1

Published by Schneider Electric

© 2023 - Schneider Electric – All rights reserved

03-2025