

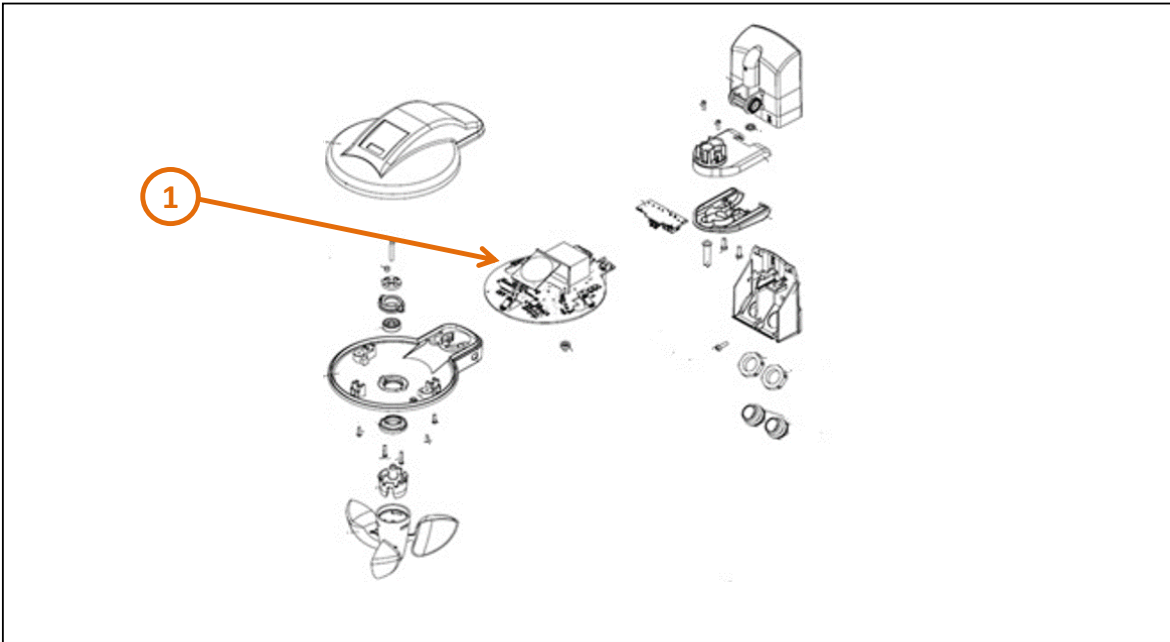
Product End of Life Instructions

KNX WEATHER STATION SENSOR BASIC





End of Life Instructions



| Recommendation | Number on drawing | Component / Material | Weight (g) | Comment |
|------------------|-------------------|----------------------|------------|---------|
| To be depolluted | 1 | PCBA | 102.37 | |

Product description

| | |
|-----------------------------------|-----------------------------------------------------------------------------------------------------------------------------------------------------------------------------|
| Manufacturer identification | Schneider Electric Industries SAS |
| Brand name | Schneider Electric |
| Product function | The weather station measures temperature, brightness and wind speed. A rain sensor is also installed on the top of the device. The device is designed for use on buildings. |
| Product reference | MTN6904-0001 |
| Total representative product mass | 374 g |
| Representative product dimensions | 165mm x 220mm x 351mm |
| Date of information release | Jan-2025 |

Additional information

| | |
|----------------------------------------------------------|----------------------------------------------------------------------------------------------------------------------------------------------------------------------------------------------------------------------------------------------------------------------------------------------------------------------------------------------------------------------------------------------------------------------------------------|
| Legal information | This product family is in the scope of European Union directive 2012/19/EU on Waste Electrical and Electronic Equipment (WEEE). The product family must be disposed according to the legislation of the country. This document is intended for use by end of life recyclers or treatment facilities. It provides the basic information to assure an appropriate end of life treatment for the components and materials of the product. |
| In case of special transportation: transportation method | N/A |
| Recyclability potential | <p>4%</p> <p>The recyclability rate was calculated from the recycling rates of each material making up the product based on REEECY'LAB tool developed by Ecosystem, for components/materials not covered by the tool, data from the EIME database and the related PSR was taken. If no data was found a conservative assumption was used (0% recyclability).</p> |

Schneider Electric Industries SAS
Country Customer Care Center
<http://www.se.com/contact>
35, rue Joseph Monier
CS 30323
F- 92500 Rueil Malmaison Cedex
RCS Nanterre 954 503 439
Capital social 928 298 512 €

www.se.com

ENVEOLI1806005_V2

Published by Schneider Electric

© 2023 - Schneider Electric – All rights reserved

Jan-2025