

# Product End of Life Instructions

## XPSMCM Safety I/O module







## Potential disassembly risks



## DANGER

### HAZARD OF ELECTRIC SHOCK, EXPLOSION OR ARC FLASH

- Disconnect all power from all equipment including connected devices prior to removing any covers or doors, or installing or removing any accessories, hardware, cables, or wires except under the specific conditions specified in the appropriate hardware guide for this equipment.
- Wait 5 minutes to allow the internal capacitors to discharge.
- Always use a properly rated voltage sensing device to confirm the power is off where and when indicated.

**Failure to follow these instructions will result in death or serious injury.**



## WARNING

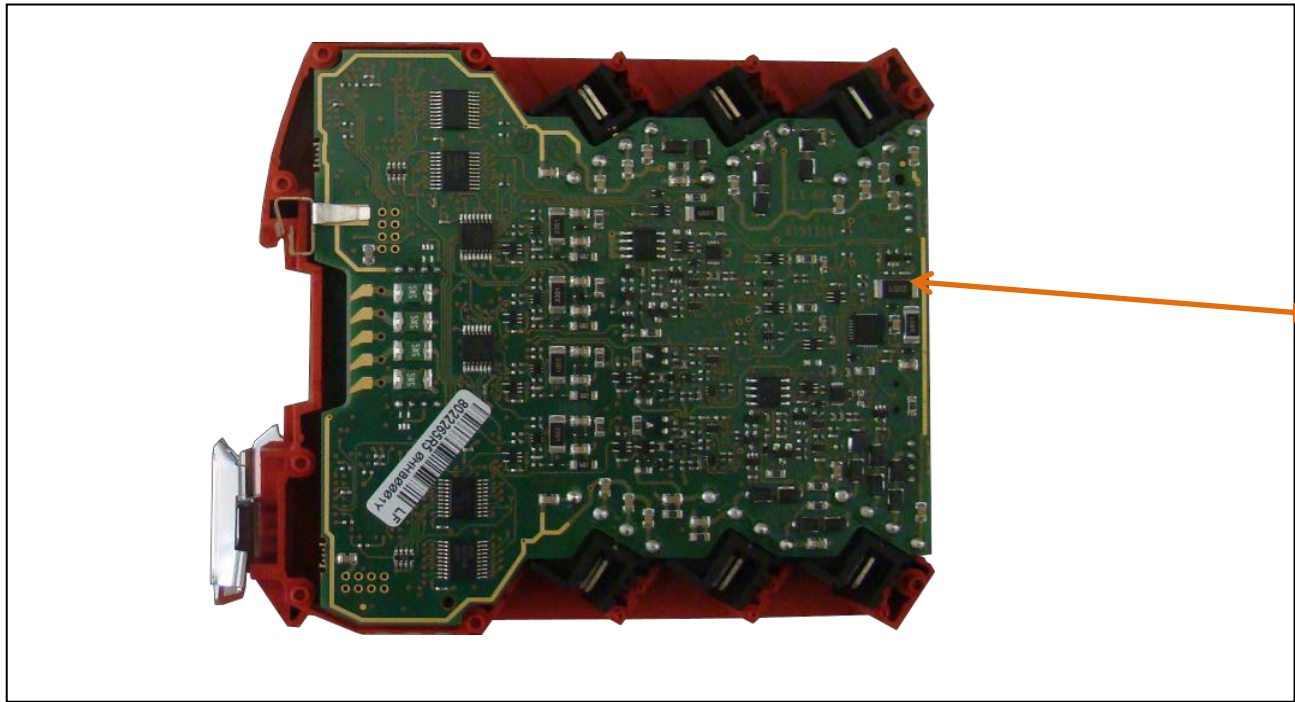
### UNINTENTIONAL EQUIPMENT OPERATION

- Perform an in-depth risk analysis to determine the appropriate safety integrity level for your specific application, based on all the applicable standards.

**Failure to follow these instructions will result in death ,serious injury, or equipment damage.**



## End of Life Instructions



Recommendation	Number on drawing	Component / Material	Weight (in g)	Comment
To be depolluted	1	Electronic Board (Communication) > 10cm²	51,67	



## Product description

Manufacturer identification	Schneider Electric Industries SAS
Brand name	Schneider Electric
Product function	The Preventa XPSMCM modular safety controller system is designed to monitor and process safety sensor signals and can be configured using the configurable SoSafe software. The CPU of the system can be used stand-alone or extended by a variety of extension modules. The XPSMCM system is capable to monitor safety switches, emergency stops buttons, safety mats, two-hand controls, magnetic switches, foot switches, light curtains , speeds analog values and more. As a result of the signal processing potentially hazardous movement can be enabled or disabled. Status information can be provided via different fieldbusses.
Product reference	XPSMCMDO0002
Total representative product mass	129,97 g
Representative product dimensions	22.5mm x 114.5mm x 108mm
Accessories	No
Date of information release	11/2023

## Additional information

Legal information	The product family must be disposed according to the legislation of the country. This document is intended for use by end of life recyclers or treatment facilities. It provides the basic information to assure an appropriate end of life treatment for the components and materials of the product.	
In case of special transportation: transportation method	No	
Recyclability potential	3%	Recyclability rate has been calculated based on REEECY'LAB tool developed by Ecosystem, for components/materials not covered by the tool, data from the "ECO'DEEEE recyclability and recoverability calculation method" was taken. If no data was found a conservative assumption was used (0% recyclability).

Schneider Electric Industries SAS

Country Customer Care Center  
<http://www.se.com/contact>

35, rue Joseph Monier  
 CS 30323  
 F- 92500 Rueil Malmaison Cedex  
 RCS Nanterre 954 503 439  
 Capital social 928 298 512 €

[www.se.com](http://www.se.com)

ENVEOLI2403017\_V1

Published by Schneider Electric

© 2023 - Schneider Electric – All rights reserved

11/2023