

Product End of Life Instructions

Harmony XB7 Emergency Stop Pushbutton





Potential disassembly risks

⚠ CAUTION

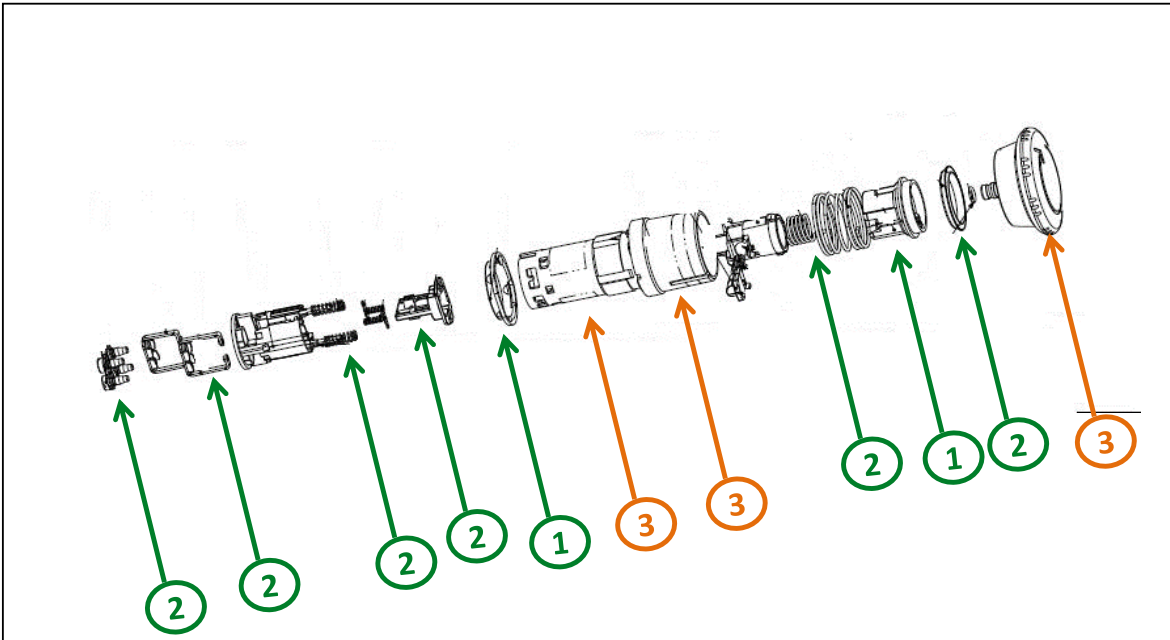
HAZARD OF PARTS WITH SHARP EDGES

Apply appropriate personal protective equipment (PPE) during disassembly.

Failure to follow these instructions can result in injury.



End of Life Instructions



Recommendation	Number on drawing	Component / Material	Weight (in g)	Comment
To be dismantled	1	Head, Cap, Actuator, Gasket	8.6	Plastic Without FR
To be dismantled	2	Spring, Screw, Bridge, Rivet, Plate	8.744	Metal Parts
To be depolluted	3	Head, Top & Bottom Cap	26.88	Plastic With FR
Other		Liquid and pasty substances	0.7	Grease

Product description

Manufacturer identification	Schneider Electric Industries SAS
Brand name	Schneider Electric
Product function	An emergency stop pushbutton is a button which is used when the functions of a machine must be immediately stopped. When anything about the machine's functions or the operators surroundings poses a threat to production or safety then these buttons can be pressed.
Product reference	XB7NS8442
Total representative product mass	44.9271 g
Representative product dimensions	H81mm x L40mm x D40mm
Accessories	No accessories needed
Date of information release	07/2024

Additional information

Legal information	This product family is in the scope of European Union directive 2012/19/EU on Waste Electrical and Electronic Equipment (WEEE). The product family must be disposed according to the legislation of the country. This document is intended for use by end of life recyclers or treatment facilities. It provides the basic information to assure an appropriate end of life treatment for the components and materials of the product.	
In case of special transportation: transportation method	No specific means of transportation are required.	
Recyclability potential	19%	Recyclability rate has been calculated based on REEECY'LAB tool developed by Ecosystem, for components/materials not covered by the tool, data from the "ECO'DEEEE recyclability and recoverability calculation method" was taken. If no data was found a conservative assumption was used (0% recyclability).

Schneider Electric Industries SAS
Country Customer Care Center
<http://www.schneider-electric.com/contact>
35, rue Joseph Monier
CS 30323
F- 92500 Rueil Malmaison Cedex
RCS Nanterre 954 503 439
Capital social 928 298 512 €

www.se.com

ENVEOLI2312043_V1

Published by Schneider Electric

© 2023 - Schneider Electric – All rights reserved

07/2024