

Product End of Life Instructions

STC6000

Pro-face ST6000



Pro-face
by Schneider Electric



Potential disassembly risks

⚠ WARNING

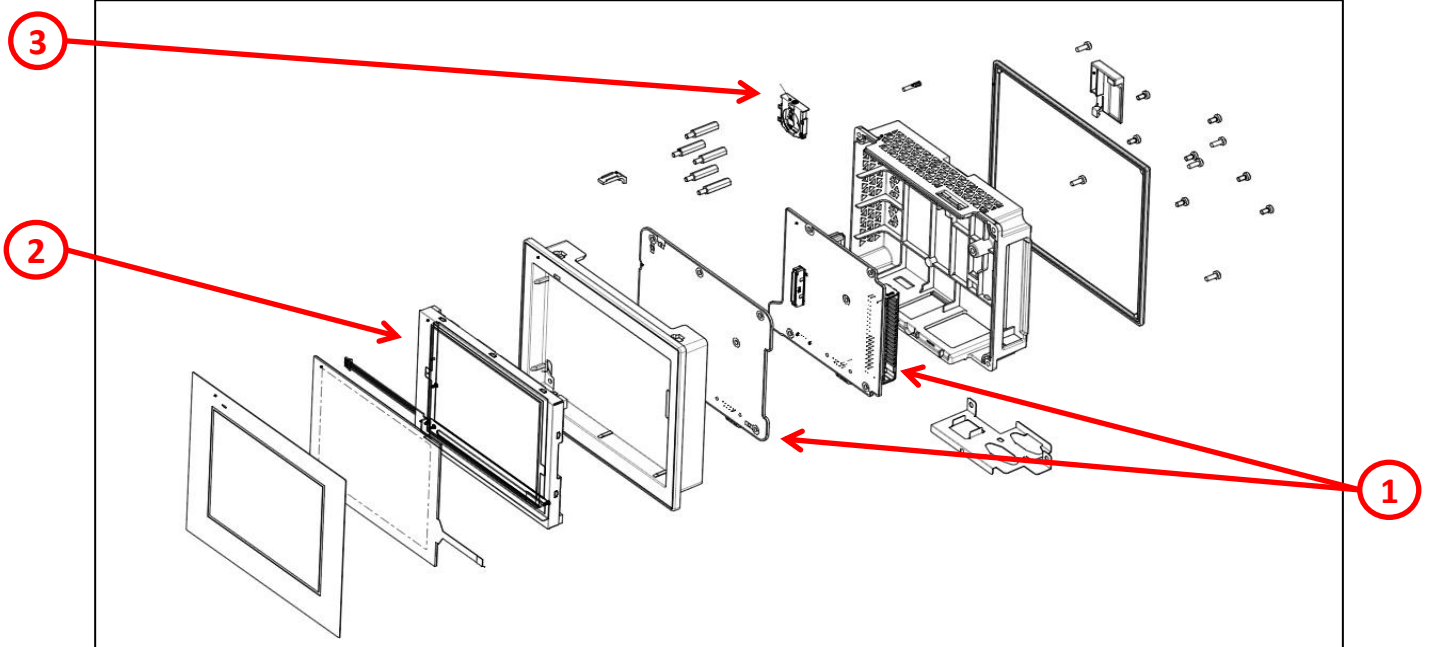
HAZARD OF ARC FLASH OR FIRE

- Disconnect battery terminals before disassembly
- Avoid any electrical connection between the terminals

Failure to follow these instructions can result in death or serious injury.



End of Life Instructions



Recommendation	Number on drawing	Component / Material	Weight (in g)	Comment
To be depolluted	1	Electronic Board (Communication) > 10cm ²	207.5	PCBA
To be depolluted	2	LCD (surface > 100cm ²) and all those back-lighted with gas discharge lamps	125.1	PCBA
To be depolluted	3	Batteries	2.5	
Other			464.9	Not in above

Product description

Manufacturer identification	Schneider Electric Industries SAS
Brand name	Pro-face by Schneider Electric
Product function	Designed for integration with embedded and extension I/O, to providing sufficient functionality for controlling small machines and simple processes.
Product reference	PFXSTC6300TADDCE
Additional similar product references	PFXSTC6300TADDKE
Total representative product mass	800 g
Representative product dimensions	170mm x 137mm x 60mm
Accessories	Mounting screws, USB clip, Nylon band, etc.
Date of information release	2023/05/06

Additional information

Legal information	The product family must be disposed according to the legislation of the country. This document is intended for use by end of life recyclers or treatment facilities. It provides the basic information to assure an appropriate end of life treatment for the components and materials of the product.	
In case of special transportation: transportation method	No	
Recyclability potential	40%	Recyclability rate has been calculated based on REEECY'LAB tool developed by Ecosystem, for components/materials not covered by the tool, data from the "ECO" DEEE recyclability and recoverability calculation method" was taken. If no data was found a conservative assumption was used (0% recyclability).

Schneider Electric Industries SAS
Country Customer Care Center
<http://www.schneider-electric.com/contact>
35, rue Joseph Monier
CS 30323
F- 92500 Rueil Malmaison Cedex
RCS Nanterre 954 503 439
Capital social 896 313 776 €

www.se.com

ENVEOLI2305016_V1

Published by Schneider Electric

© 2023 - Schneider Electric – All rights reserved

2023/05/06