

# Product End of Life Instructions

## Pro-face HMI ST6000 basic Operator Panel

### Pro-face ST6000



**Pro-face**  
by Schneider Electric



## Potential disassembly risks

### ⚠ WARNING

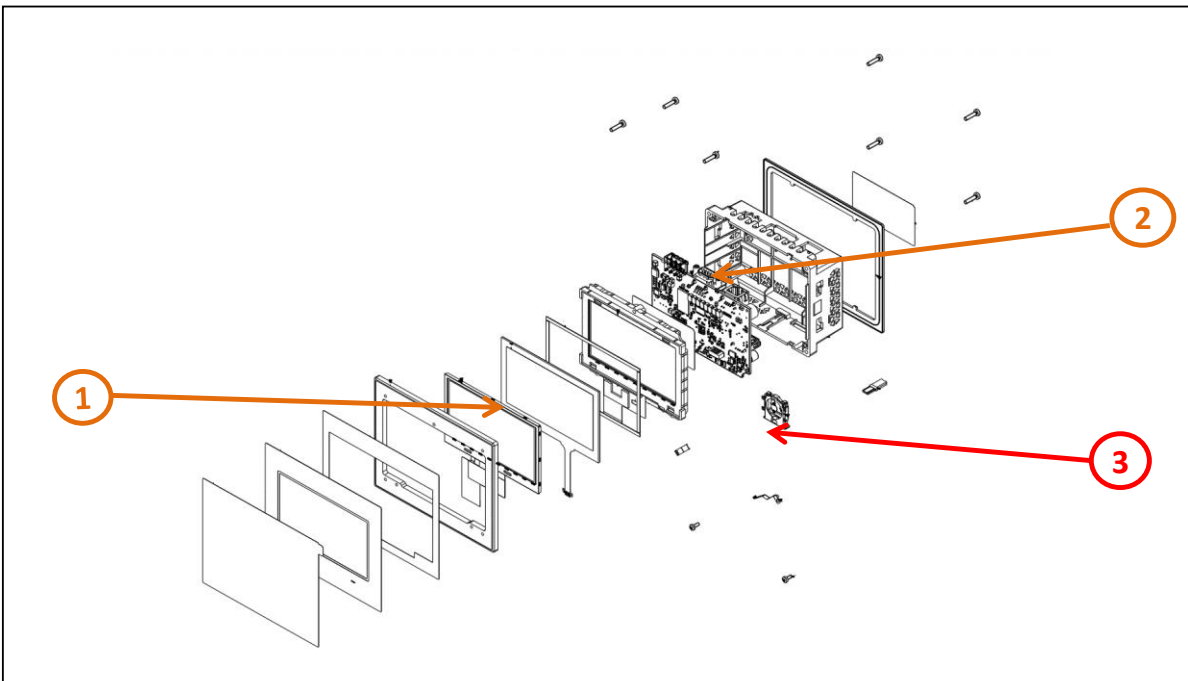
#### HAZARD OF ARC FLASH OR FIRE

- Disconnect battery terminals before disassembly
- Avoid any electrical connection between the terminals

**Failure to follow these instructions can result in death or serious injury.**



## End of Life Instructions



Recommendation	Number on drawing	Component / Material	Weight (in g)	Comment
To be depolluted	1	LCD (surface > 100cm <sup>2</sup> ) and all those back-lighted with gas discharge lamps	45	LCD Screen
To be depolluted	2	Electronic Board (Communication) > 10cm <sup>2</sup>	63.5	PCBA
Potential hazards	3	Battery	2.5	Battery (Lithium-ion)
Other			184	Except of the above parts



## Product description

Manufacturer identification	Schneider Electric Industries SAS
Brand name	Pro-face by Schneider Electric
Product function	Human machine interface with serial link and ethernet communication
Product reference	PFXST6200WAD
Additional similar product references	PFXST6400WAD PFXST6500WAD PFXST6600WAD PFXST6700WAD PFXSTW6200WAD PFXSTW6400WAD PFXSTW6500WAD PFXSTW6600WAD PFXSTW6700WAD
Total representative product mass	295 g
Representative product dimensions	134.5mm x 43mm x 108.5mm
Accessories	No
Date of information release	6/1/2024



## Additional information

Legal information	This product family is in the scope of European Union directive 2012/19/EU on Waste Electrical and Electronic Equipment (WEEE). The product family must be disposed according to the legislation of the country. This document is intended for use by end of life recyclers or treatment facilities. It provides the basic information to assure an appropriate end of life treatment for the components and materials of the product.	
In case of special transportation: transportation method	No	
Recyclability potential	29%	Recyclability rate has been calculated based on REEECY'LAB tool developed by Ecosystem, for components/materials not covered by the tool, data from the "ECO'DEEE recyclability and recoverability calculation method" was taken. If no data was found a conservative assumption was used (0% recyclability).

Schneider Electric Industries SAS

Country Customer Care Center  
<http://www.se.com/contact>

35, rue Joseph Monier  
 CS 30323  
 F- 92500 Rueil Malmaison Cedex  
 RCS Nanterre 954 503 439  
 Capital social 928 298 512 €

[www.se.com](http://www.se.com)

ENVEOLI2406010\_V1

Published by Schneider Electric

© 2023 - Schneider Electric – All rights reserved

6/1/2024