

Product End of Life Instructions

PFXGP46 Series

Pro-face GP4000



Pro-face
by Schneider Electric



Potential disassembly risks

The Circularity profile provides information about preparation for re-use and treatment. It identifies the relevant EEE components and materials as well as their location. Safety instructions for product dismantling and depollution are provided into the User manual or maintenance guide.

WARNING

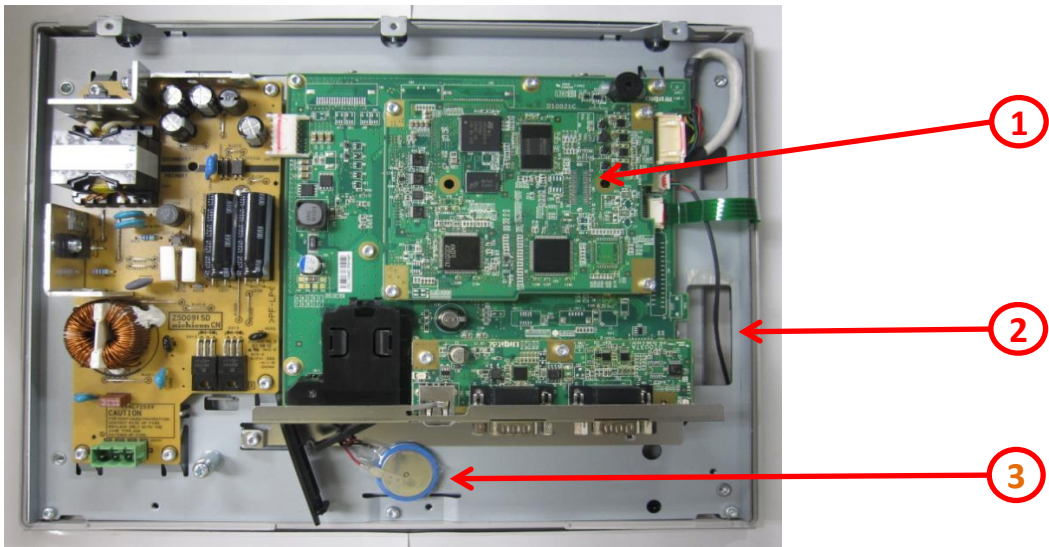
HAZARD OF ARC FLASH OR FIRE

- Disconnect battery terminals before disassembly
- Avoid any electrical connection between the terminals

Failure to follow these instructions can result in death or serious injury.



End of Life Instructions



Recommendation	Number on drawing	Component / Material	Weight (in g)	Comment
To be depolluted	1	Electronic Board (Communication) > 10cm ²	367.8	PCBA
To be depolluted	2	LCD (surface > 100cm ²) and all those back-lighted with gas discharge lamps	750	LCD Screen
Potential hazards	3	Batteries	2.5	
Other			1379.7	



Product description

Manufacturer identification	Schneider Electric Industries SAS
Brand name	Pro-face by Schneider Electric
Product function	High connectivity with a wide range of industrial controllers
Product reference	PFXGP4601TADC
Additional similar product references	PFXGP4601TAA PFXGP4601TAAC PFXGP4601TAD PFXGP4601TADR PFXGP4601TMD PFXGP4601TMA PFXGP4603TAD PFXGP4621TAA PFXGP4621TAD PFXGP4501TAA PFXGP4501TAAC PFXGP4501TAD PFXGP4501TADC PFXGP4501TADR PFXGP4501TMA PFXGP4501TMD PFXGP4501TADW PFXGP4503TAD PFXGP4521TAA PFXGP4521TAD
Total representative product mass	2500 g
Representative product dimensions	241mm x 315mm x 56mm
Accessories	No
Date of information release	2023/10/18



Additional information

Legal information	This product family is in the scope of European Union directive 2012/19/EU on Waste Electrical and Electronic Equipment (WEEE). The product family must be disposed according to the legislation of the country. This document is intended for use by end of life recyclers or treatment facilities. It provides the basic information to assure an appropriate end of life treatment for the components and materials of the product.	
Recyclability potential	26%	Recyclability rate has been calculated based on REEECYLAB tool developed by Ecosystem, for components/materials not covered by the tool, data from the “ECO’ DEEE recyclability and recoverability calculation method” was taken. If no data was found a conservative assumption was used (0% recyclability).

Schneider Electric Industries SAS

Country Customer Care Center
<http://www.se.com/contact>

35, rue Joseph Monier
 CS 30323
 F- 92500 Reuil Malmaison Cedex
 RCS Nanterre 954 503 439
 Capital social 928 298 512 €

www.se.com

ENVEOLI120709EN_V2

Published by Schneider Electric

© 2023 - Schneider Electric – All rights reserved

2023/10/18