

# Product End of Life Instructions

## 5.7 Handheld Touch Panel, Emergency Stop

### GP4000 Handy series



**Pro-face**  
by Schneider Electric



## Potential disassembly risks

The Circularity profile provides information about preparation for re-use and treatment. It identifies the relevant EEE components and materials as well as their location. Safety instructions for product dismantling and depollution are provided into the User manual or maintenance guide

### **⚠ WARNING**

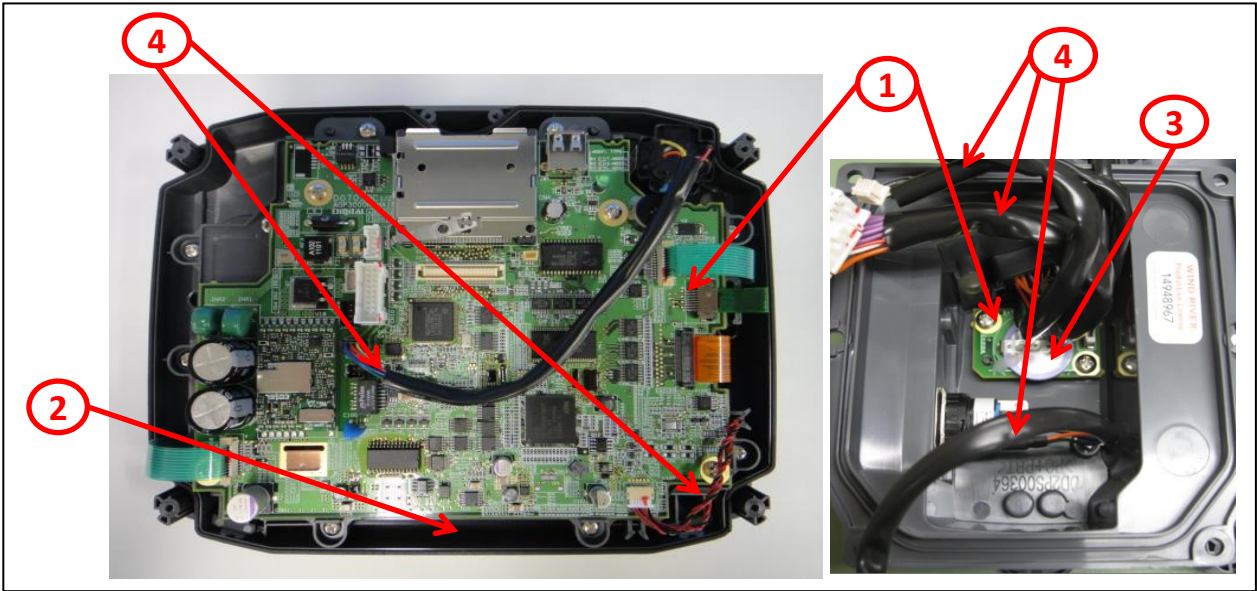
#### **HAZARD OF ARC FLASH OR FIRE**

- Disconnect battery terminals before disassembly
- Avoid any electrical connection between the terminals

**Failure to follow these instructions can result in death or serious injury.**



## End of Life Instructions



Recommendation	Number on drawing	Component / Material	Weight (in g)	Comment
To be depolluted	1	Electronic Board (Communication) > 10cm <sup>2</sup>	211	PCBA
To be depolluted	2	LCD (surface > 100cm <sup>2</sup> ) and all those back-lighted with gas discharge lamps	187	LCD Screen
Potential hazards	3	Batteries	1.6	
To be depolluted	4	Cable	497.4	
Other				



## Product description

Manufacturer identification	Schneider Electric Industries SAS
Brand name	Pro-face
Product function	PFXGP4311HTADER is advanced hand-held panel. - 640 x 480 pixels VGA - 5.7" - TFT LCD - 24 V DC
Product reference	PFXGP4311HTADER
Additional similar product references	PFXGP4311HTADERK PFXGP4311HTADEYK PFXGP4311HTADEGK PFXGP4311HTAD PFXGP4311HTADRFZ04 PFXGP4311HTADRFZ05 PFXGP4311HTADERP CA7-TPPEN/ALL-01 GP3000H-DUPS-01 GP3000H-EMGD-01 GP3000H-HS-01 GP3000H-WMA-01 GP2000H-EMGD11 GP2000H-STRAP11 H70-HS00-MS GP3000H-WPGADP-01 PFXZC7TPP1 PFXZGPADWMA1 PFXZGPEMGD1 PFXZGPST2H2
Total representative product mass	910 g
Representative product dimensions	178.3mm x 224mm x 107.7mm
Accessories	No
Date of information release	07-2024



## Additional information

Legal information	This product family is in the scope of European Union directive 2012/19/EU on Waste Electrical and Electronic Equipment (WEEE). The product family must be disposed according to the legislation of the country. This document is intended for use by end of life recyclers or treatment facilities. It provides the basic information to assure an appropriate end of life treatment for the components and materials of the product.	
Recyclability potential	8%	Recyclability rate has been calculated based on REEECY'LAB tool developed by Ecosystem, for components/materials not covered by the tool, data from the "ECO' DEEE recyclability and recoverability calculation method" was taken. If no data was found a conservative assumption was used (0% recyclability).

Schneider Electric Industries SAS

Country Customer Care Center  
<http://www.se.com/contact>

35, rue Joseph Monier  
 CS 30323  
 F- 92500 Rueil Malmaison Cedex  
 RCS Nanterre 954 503 439  
 Capital social 928 298 512 €

[www.se.com](http://www.se.com)

ENVEOLI1604007\_V2

Published by Schneider Electric

© 2024 - Schneider Electric – All rights reserved

07-2024