

Product End of Life Instructions

advanced touchscreen panel,GP4400

PFXGP44 Series



Pro-face
by Schneider Electric



Potential disassembly risks

The Circularity profile provides information about preparation for re-use and treatment. It identifies the relevant EEE components and materials as well as their location. Safety instructions for product dismantling and depollution are provided into the User manual or maintenance guide

⚠ WARNING

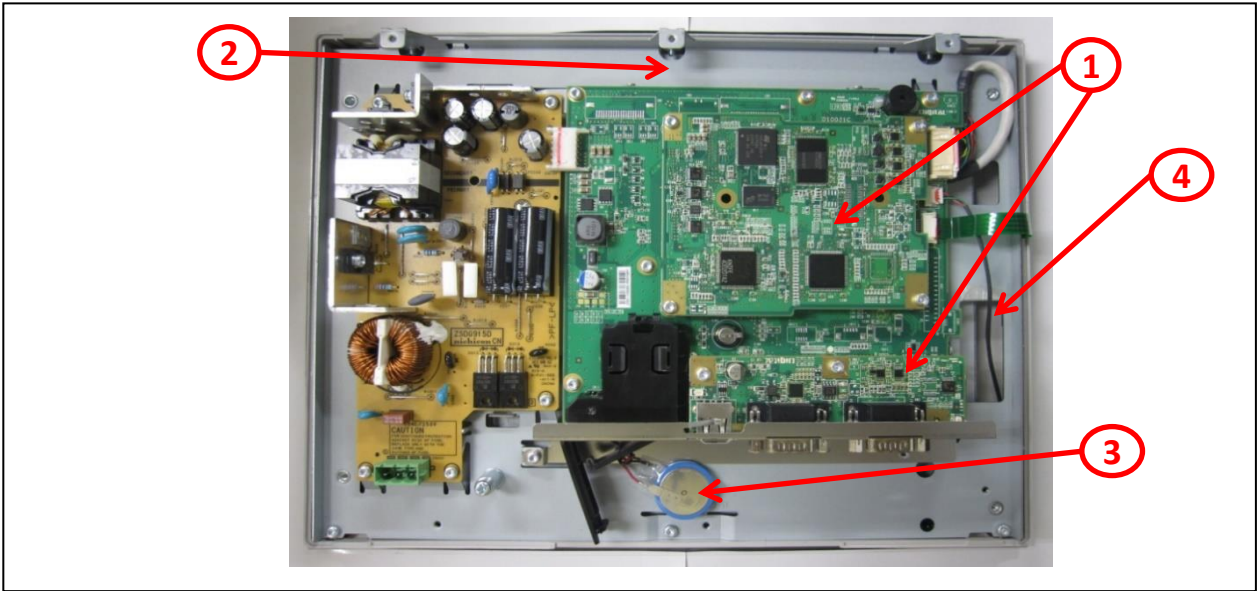
HAZARD OF ARC FLASH OR FIRE

- Disconnect battery terminals before disassembly
- Avoid any electrical connection between the terminals

Failure to follow these instructions can result in death or serious injury.



End of Life Instructions



Recommendation	Number on drawing	Component / Material	Weight (in g)	Comment
To be depolluted	1	Electronic Board (Communication) > 10cm²	233	PCBA
To be depolluted	2	LCD (surface > 100cm²) and all those back-lighted with gas discharge lamps	205	LCD Screen
Potential hazards	3	Battery	3	
To be dismantled	4	Cable	5	
Other			754	



Product description

Manufacturer identification	Schneider Electric Industries SAS
Brand name	Pro-face
Product function	The main purpose of the GP4400 Series is to make available Graphic Operator Interface.
Product reference	PFXGP4401TAD
Additional similar product references	PFXGP4401WADW PFXGP4401WADWF0C PFXGP4401TADF3 PFXGP4401TADFZ06 PFXGP4401TADFZ03 PFXGP4401TADFZ01 PFXGP4401TADFZ07 PFXGP4401TAD PFXGP4401TADBU4 PFXGP4401TADF1 PFXGP4401TADF1C PFXGP4402WADW PFXGP4502WADW PFXGP4401TADF0C PFXGP4401TADH PFXGP4401TADM PFXGP4301TAD PFXGP4301TADC PFXGP4301TADFZ16 PFXGP4301TADFZ23 PFXGP4301TADH PFXGP4301TADWFZ09 PFXGP4301TADWFZ07 PFXGP4301TADWFZ14 PFXGP4301TADW PFXGP4301TADWC PFXGP4301TADWFZ06 PFXGP4301TADWF2 PFXGP4303TAD PFXGP4301TADR PFXGP4401TADR
Total representative product mass	1200 g
Representative product dimensions	173mm x 218mm x 60mm
Accessories	No
Date of information release	06-2024



Additional information

Legal information	This product family is in the scope of European Union directive 2012/19/EU on Waste Electrical and Electronic Equipment (WEEE). The product family must be disposed according to the legislation of the country. This document is intended for use by end of life recyclers or treatment facilities. It provides the basic information to assure an appropriate end of life treatment for the components and materials of the product.	
Recyclability potential	51%	Recyclability rate has been calculated based on REEECY'LAB tool developed by Ecosystem, for components/materials not covered by the tool, data from the "ECO' DEEE recyclability and recoverability calculation method" was taken. If no data was found a conservative assumption was used (0% recyclability).

Schneider Electric Industries SAS

Country Customer Care Center
<http://www.se.com/contact>

35, rue Joseph Monier
CS 30323
F- 92500 Rueil Malmaison Cedex
RCS Nanterre 954 503 439
Capital social 928 298 512 €

www.se.com

ENVEOLI120710EN_V2

Published by Schneider Electric

© 2024 - Schneider Electric – All rights reserved

06-2024