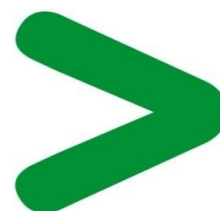


Product End of Life Instructions

Magelis HMI ST Operator Panel

Harmony ST6





Potential disassembly risks

⚠ WARNING

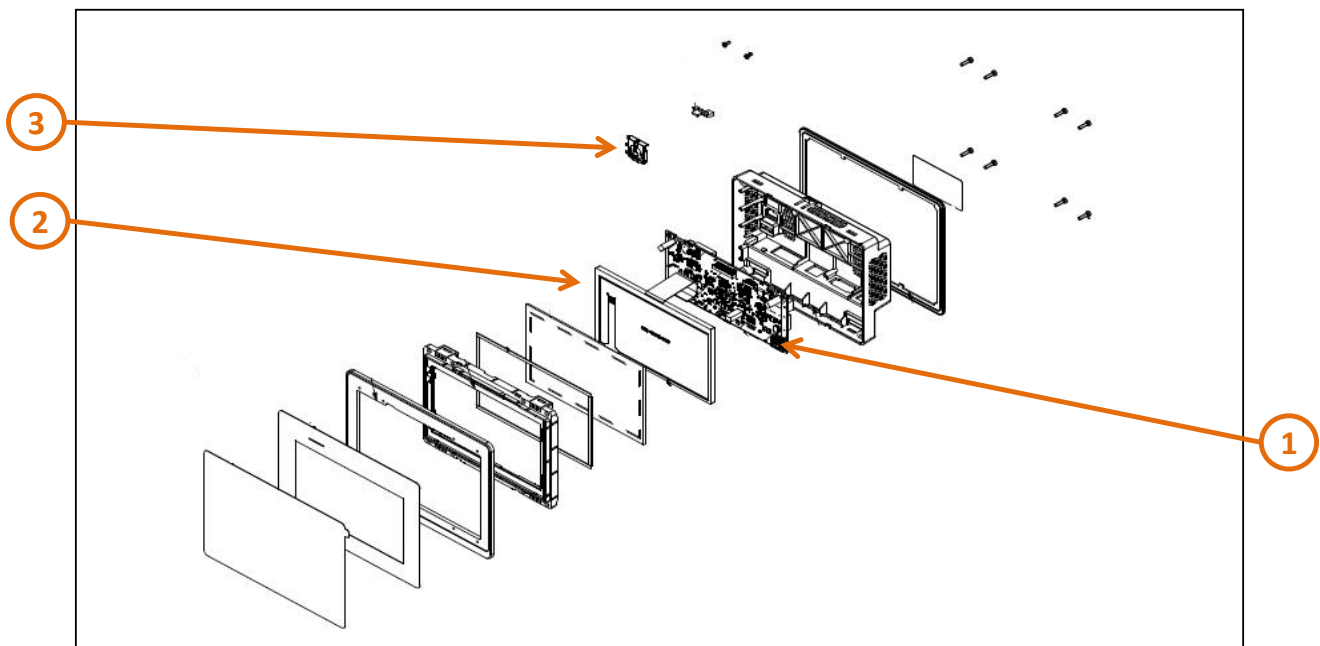
HAZARD OF ARC FLASH OR FIRE

- Disconnect battery terminals before disassembly
- Avoid any electrical connection between the terminals

Failure to follow these instructions can result in death or serious injury.



End of Life Instructions



Recommendation	Number on drawing	Component / Material	Weight (in g)	Comment
To be depolluted	1	Electronic Board (Communication) > 10cm ²	100.86	PCBA
To be depolluted	2	LCD (surface > 100cm ²) and all those back-lighted with gas discharge lamps	160.00	LCD Screen
To be depolluted	3	Battery	2.50	Battery (Lithium-ion)
Other			536.64	Except of the above parts



Product description

Manufacturer identification	Schneider Electric Industries SAS
Brand name	Schneider Electric
Product function	Human machine interface with serial link and ethernet communication
Product reference	HMIST6400
Additional similar product references	HMIST6200 HMIST6500 HMIST6600 HMIST6700 HMISTW6200 HMISTW6400 HMISTW6500 HMISTW6600 HMISTW6700
Total representative product mass	800 g
Representative product dimensions	208mm x 153mm x 45mm
Accessories	No
Date of information release	2024/09/04

Additional information

Legal information	This product family is in the scope of European Union directive 2012/19/EU on Waste Electrical and Electronic Equipment (WEEE). The product family must be disposed according to the legislation of the country. This document is intended for use by end of life recyclers or treatment facilities. It provides the basic information to assure an appropriate end of life treatment for the components and materials of the product.	
In case of special transportation: transportation method	No special transportation.	
Recyclability potential	29%	Recyclability rate has been calculated based on REEECY'LAB tool developed by Ecosystem, for components/materials not covered by the tool, data from the "ECO'DEEE recyclability and recoverability calculation method" was taken. If no data was found a conservative assumption was used (0% recyclability).

Schneider Electric Industries SAS
Country Customer Care Center
<http://www.schneider-electric.com/contact>
35, rue Joseph Monier
CS 30323
F- 92500 Rueil Malmaison Cedex
RCS Nanterre 954 503 439
Capital social 928 298 512 €

www.se.com

ENVEOLI1810005_V3

Published by Schneider Electric

© 2023 - Schneider Electric – All rights reserved

2024/09/04