

Product End of Life Instructions

EXW-SMARTDUO IP65 D3 L/2X1200/1LFP



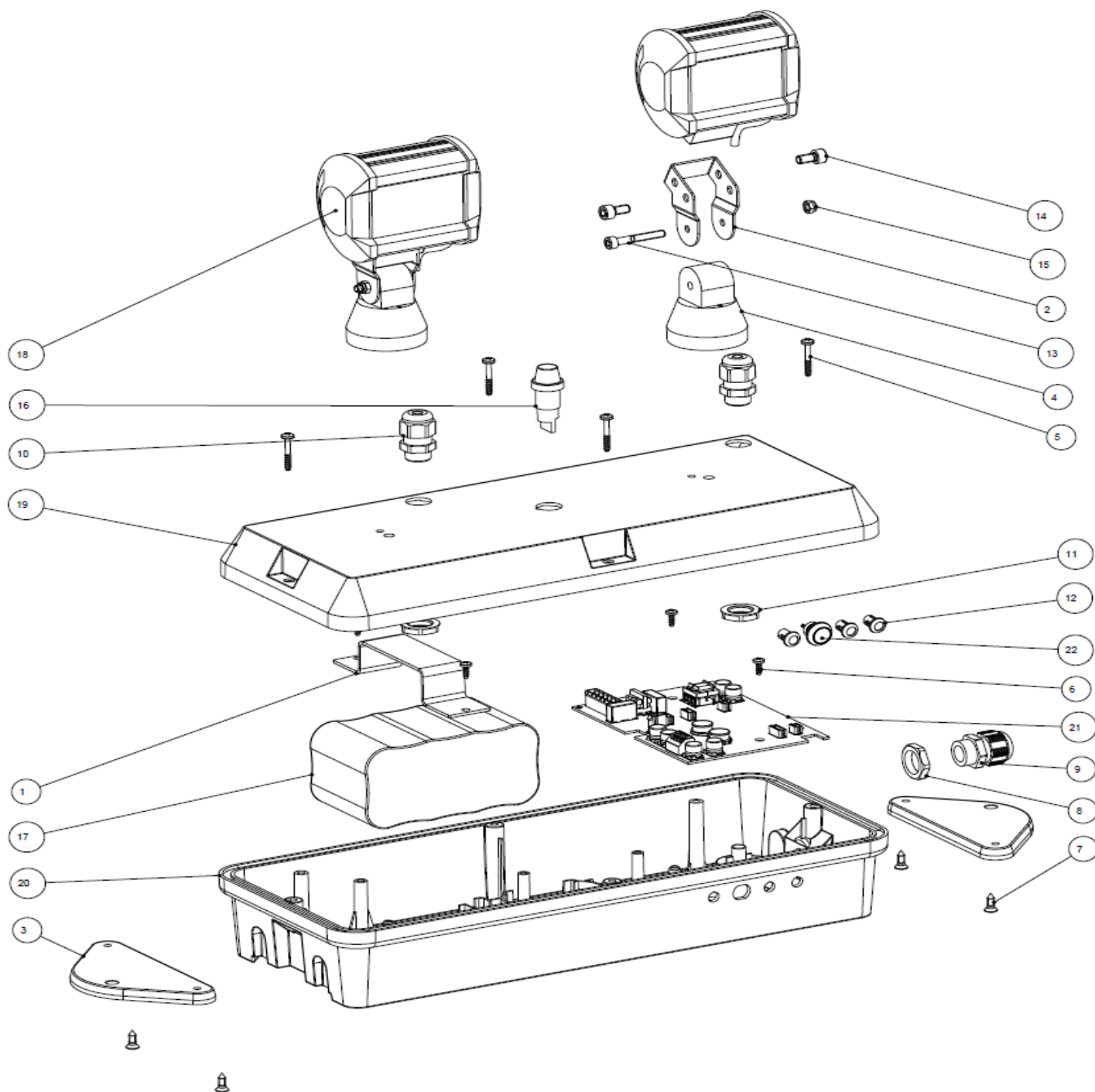
Schneider
Electric



Potential disassembly risks



End of Life Instructions



Recommendation	Number on drawing	Component / Material	Weight (in g)	Comment
To be dismantled	1	Steel (STAFFA FISS.BATT.SMARTDUO)	57	
To be dismantled	2	Steel (STAFFA FISS.FARO SMARTDUO)	20	
To be dismantled	3	PC (PIASTR.LAT.EST.PCN FISS.GUARD.)	10	
To be dismantled	4	PC SNODO FARO PAMNS GUARD.	15	
To be dismantled	5	Steel (VITE TCC CR 2P AUT4X25 ZGB)	2	
To be dismantled	6	Steel (VITE TCC CR AUT6X3/8 DT6,9 ZNB)	2	
To be dismantled	7	Steel (VITE AUT.TGS CROCE 8X1/2)	0,8	
To be dismantled	8	PA (DADO NYLON G.PG11 H5)	10	
To be dismantled	9	PA (PRESSACAVO G.PG11 AS S/D)	10	
To be dismantled	10	PA (PRESSACAVO N.M16 AS S/D)	10	
To be dismantled	11	PA (DADO NYLON N.M16X1,5 H5)	20	
To be dismantled	12	PA (GEMMA TRASP.D5X13 C/OR ESSENTA LEDC-2)	20	
To be dismantled	13	Steel (VITE TCE CB M5X35 INX)	2	
To be dismantled	14	Steel (VITE TCE CB M6X6 BRN)	2	
To be dismantled	15	PA (DADO AUTOBLOCC.M5 H5 INX)	20	
To be dismantled	16	PC (PORTALAMP.PANN.E10 RAFI)	90	
To be depolluted	17	Electronic Board (Power) > 10cm²	730	
To be depolluted	17	Other battery	730	
To be dismantled	22	PA (PUSHBUTTON SWITCH)	10	



Product description

Manufacturer identification	Schneider Electric Industries SAS
Brand name	Schneider Electric
Product function	Non-maintained emergency luminaire (EN 60598-2-22) luminaire in which the emergency lighting lamps are operate only when the supply to the normal lighting fails
Product reference	OVA48060
Additional similar product references	OVA48060 OVA48020
Total representative product mass	2800 g
Representative product dimensions	400 x 250 x 168
Accessories	0
Date of information release	09/2020



Additional information

Legal information	This product family is in the scope of European Union directive 2012/19/EU on Waste Electrical and Electronic Equipment (WEEE). The product family must be disposed according to the legislation of the country. This document is intended for use by end of life recyclers or treatment facilities. It provides the basic information to assure an appropriate end of life treatment for the components and materials of the product.	
In case of special transportation: transportation method	0	
Recyclability potential	78%	Based on "ECO'DEEE recyclability and recoverability calculation method" (version V1, 20 Sep. 2008 presented to the French Agency for Environment and Energy Management: ADEME).

Schneider Electric Industries SAS

Country Customer Care Center
<http://www.schneider-electric.com/contact>

35, rue Joseph Monier
CS 30323
F- 92506 Rueil Malmaison Cedex
RCS Nanterre 954 503 439
Capital social 896 313 776 €

www.schneider-electric.com

ENVEOLI2005003_V1

Published by Schneider Electric

© 2019 - Schneider Electric – All rights reserved

09/2020

