

# Product End of Life Instructions

## Exiway Smartled Dicube Activa Wall 650 lumen

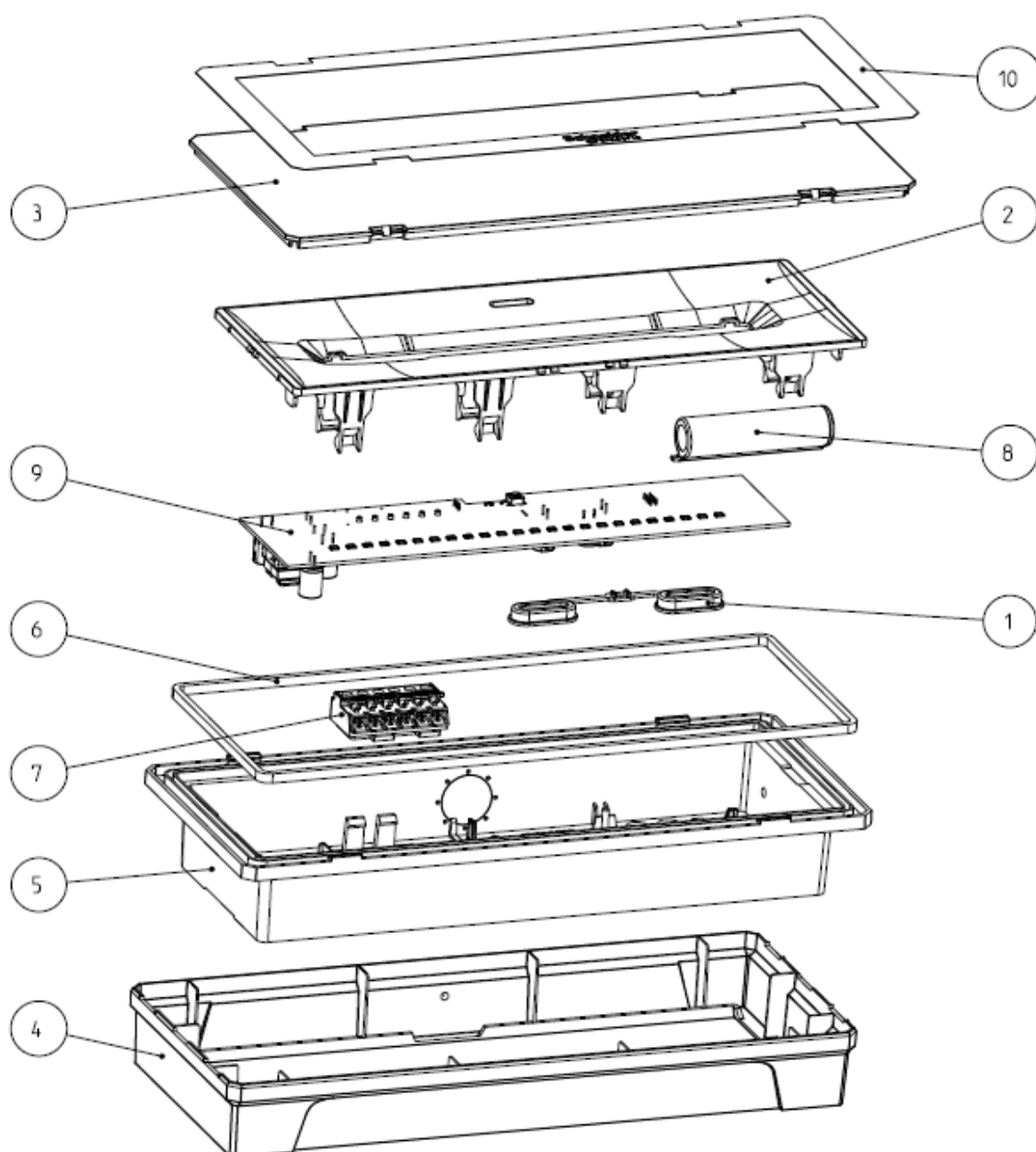




## Potential disassembly risks



## End of Life Instructions



Recommendation	Number on drawing	Component / Material	Weight (in g)	Comment
To be dismantled	1	PE Polyethylene (Caps for IP65)	2.4	
To be dismantled	2	PC (Reflective body to fix PCBA + additional reflective piece)	84	
To be dismantled	3	PC (Transparent screen)	109	
To be dismantled	4	PC (External frame)	98	
To be dismantled	5	PC (Lamp body)	174	
To be dismantled	6	ABS Acrylonitrile Butadiene Styrene (GASKET)	1.2	
To be dismantled	7	PA66 (Terminal block)	7.95	
To be depolluted	8	Battery (LiFePO)	175	
To be depolluted	9	Electronic components (PCBA)	80	
To be dismantled	10	PE (Transparent film)	0.33	

Product description

Manufacturer identification	Schneider Electric Industries SAS
Brand name	Schneider Electric Industries SAS
Product function	DALI Emergency Luminaires for Dicube System compliant to EN 60598-2-22. The luminaire is powered by its own battery and energized in case of black-out.
Product reference	OVA48531
Total representative product mass	760 g
Representative product dimensions	300mm x 127mm x 45,5mm
Accessories	0
Date of information release	10/2024

Additional information

Legal information

This product family is in the scope of European Union directive 2012/19/EU on Waste Electrical and Electronic Equipment (WEEE). The product family must be disposed according to the legislation of the country. This document is intended for use by end of life recyclers or treatment facilities. It provides the basic information to assure an appropriate end of life treatment for the components and materials of the product.

Recyclability potential

50%

The recyclability rate was calculated from the recycling rates of each material making up the product based on REEECY'LAB tool developed by Ecosystem, for components/materials not covered by the tool, data from the EIME database and the related PSR was taken. If no data was found a conservative assumption was used (0% recyclability).

Schneider Electric Industries SAS

Country Customer Care Center  
<http://www.se.com/contact>

35, rue Joseph Monier

CS 30323

F- 92500 Rueil Malmaison Cedex

RCS Nanterre 954 503 439

Capital social 928 298 512 €

[www.se.com](http://www.se.com)

Published by Schneider Electric

ENVEOLI2409023\_V1

© 2023 - Schneider Electric – All rights reserved

10/2024