





SASH

Apparecchio LED per esterno IP65, con effetto girofinestra.

Struttura in pressofusione di alluminio verniciato con polveri poliestere a elevata resistenza ai raggi ultravioletti e alla corrosione, lente in policarbonato trasparente.

Consente l'illuminazione del perimetro delle finestre creando un effetto luminoso che valorizza le facciate di edifici residenziali o palazzi storici.

Alimentatore LED integrato.

Dotato di doppio passacavo per collegamento ENTRATA-USCITA.

IP65 outdoor LED luminaire, to light up the window's frame.

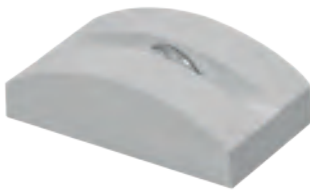
Die-cast aluminium body, painted with polyester powders, highly resistant to UV rays and corrosion and clear polycarbonate lens.

It is suitable to light up the windows perimeter frame achieving a light effect that enhances the residential or historical building facades. Integrated LED driver.

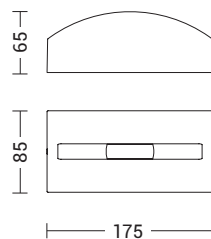
Equipped with double cable gland for INPUT-OUTPUT connection.



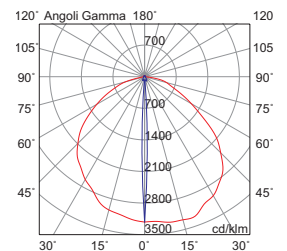
OUTDOOR Total Look



Codice Code	CCT	Flusso lm Flux lm	Potenza Wattage	Dimensioni mm Dimensions mm
SAS001	3000K	180	3,4W	175 x 85 x 65
SAS002	4000K	190	3,4W	175 x 85 x 65



effetto lama 10°x170°
blade effect 10°x170°



Finiture Finishes



Grigio Grey