

Profilo in alluminio estruso per alloggiare strip LED, fornito in lunghezza 2000mm, sezionabile.

Disponibile nella finitura bianca. Da completare con diffusore in policarbonato (opale, trasparente o nero) e tappi di chiusura.

Prodotto altamente decorativo ideale per valorizzare lo spazio circostante e creare un'atmosfera accogliente e piacevole.

Linear profile in extruded aluminium, for placing LED strip, 2000mm long body, cut to size.

Available in white finish. To be completed with polycarbonate diffuser (transparent, opal or black) and with end caps.

Highly decorative product ideal for enhancing the surrounding space and creating an atmosphere welcoming and pleasant.



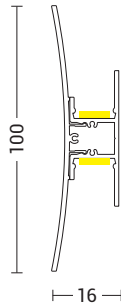
MIRIN

PARETE WALL



Codice
Code

MIN001B
2000 x 100 mm

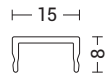


servizio service **TAILOR MADE**

esempio example

cod. **MIN001BCM + WAS001TRCM + MIN003CM**

ACCESSORI ACCESSORIES



Codice
Code

WAS008TR trasparente transparent

WAS008OP opale opal

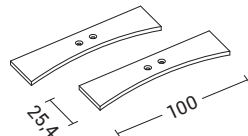
WAS008N nero black

Diffusore in policarbonato opale, trasparente o nero, 2 mt.
Polycarbonate upper or lower diffuser, in opal, transparent or black finish. 2mt.

Codice
Code

MIN002B

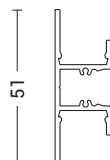
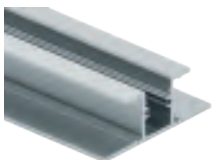
Tappi di chiusura (2pz). In alluminio verniciato bianco più 4 viti autofilettanti in acciaio inox.
End caps (2pcs). In white painted aluminum, plus 4 self-threading screws in stainless steel.



Codice
Code

MIN003

Profilo in alluminio grezzo per fissaggio a muro, 2 mt.
Raw aluminum profile for wall fixing, 2 mt.



Finiture Finishes



Bianco White

Accessori Accessories

strip LED - max **30W/mt**

p.422

driver
p.432

controller
p.434