

Non-illuminated button spring-return

Non-illuminated button spring-return

Non-illuminated button spring-return

Non-illuminated button spring-return

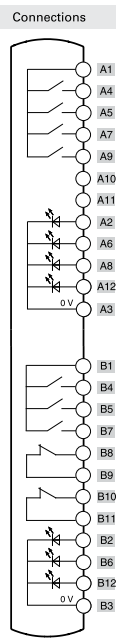
Non-illuminated button spring-return

Illuminated button spring-return

Illuminated button spring-return

Emergency push button

	Contacts	Diagram
Device 1	1NO	A1 — A4 A2 — A3 LED
Device 2	1NO	A1 — A5 A6 — A3 LED
Device 3	1NO	A1 — A7 A8 — A3 LED
Device 4	1NO	A1 — A9 A12 — A3 LED
Device 5	1NO	B1 — B4 B2 — B3 LED
Device 6	1NO	B1 — B5 B6 — B3 LED
Device 7	1NO	B1 — B7 B12 — B3 LED
Device 8	2NC	B8 — B9 B10 — B11 FD



Connector

Double M12 with 12 pole at the bottom

