

F3

| Code | Nominal/1m | W | CCT | Beam | Colour |
|-----------|------------|---|-------|------|--------|
| F3/M/3K/A | 1100 | 9 | 3000K | 30° | A |
| F3/M/4K/A | 1200 | 9 | 4000K | 30° | |
| F3/F/3K/A | 1100 | 9 | 3000K | 50° | |
| F3/F/4K/A | 1200 | 9 | 4000K | 50° | W |
| F3/M/3K/W | 1100 | 9 | 3000K | 30° | |
| F3/M/4K/W | 1200 | 9 | 4000K | 30° | |
| F3/F/3K/W | 1100 | 9 | 3000K | 50° | G |
| F3/F/4K/W | 1200 | 9 | 4000K | 50° | |
| F3/M/3K/G | 1100 | 9 | 3000K | 30° | |
| F3/M/4K/G | 1200 | 9 | 4000K | 30° | G |
| F3/F/3K/G | 1100 | 9 | 3000K | 50° | |
| F3/F/4K/G | 1200 | 9 | 4000K | 50° | |



Proiettore LED con basetta per installazione a parete, soffitto e pavimento.

LED projector with base for wall-mounted, ceiling and ground installation.

Projecteur LED avec base et piquet pour montage mural, plafond et installation au sol.

Flutlicht-LED mit Sockel und Pflock für Wandmontage, Decke und Bodeninstallation.

LED CREE

CREE LED

LED CREE

CREE LED

Lifetime 30.000h (rendimento 70%).

Lifetime 30.000h (70% lumen maintenance).

Durée de vie 30.000h (rendement 70%).

Lebensdauer 30.000h (Lichtstrom 70%).

Corpo in alluminio pressofuso verniciato bianco, grigio o antracite. Vetro temperato trasparente. Picchetto incluso nella confezione.

Body in white, grey or anthracite painted aluminium. Transparent tempered glass diffuser. Spike included.

Corps en aluminium peint en blanc, gris ou anthracite. Diffuseur en verre trempé transparent. Spike inclus.

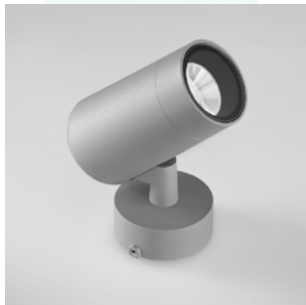
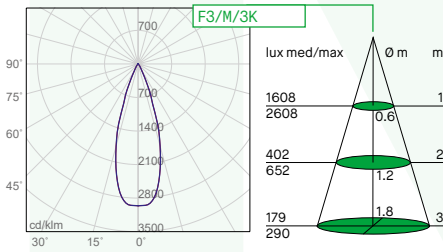
Gehäuse aus weiß, grau oder anthrazit lackiertem Aluminium. Transparenter Diffusor aus gehärtetem Glas. Spike enthalten.

Alimentatore 220-240V - 50/60Hz incluso.

220-240V - 50/60Hz power supply included.

Alimentation 220-240V - 50/60Hz incluse.

Netzgerät 220-240V - 50/60Hz enthalten.



G



A