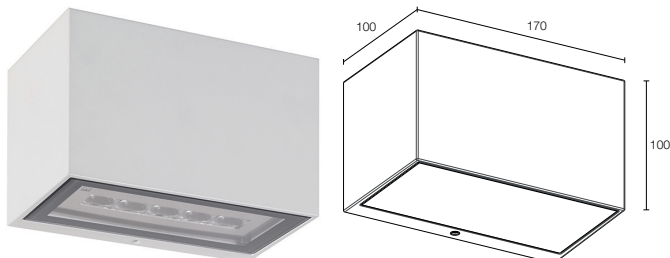
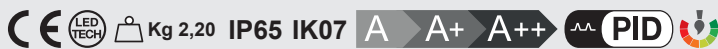




## Geko 6.1

Outdoor wall mounted / Applique da esterno



### Geko 6.1

#### DESCRIPTION

Wall mounted for outdoor applications, double beam; surface mounted (wall); body in die-cast aluminium alloy EN AB 47100, screen in tempered, serigraphed, transparent extra-clear glass; finishes: anthracite, white, cor-ten, grey, RAL on request; 10 (5+5) power LEDs; 20W (10W+10W) - 230Vac; built in power supply unit; connection box with 0,30 m cable; lumen output at source: 727 lm (3000K) per beam; delivered lumen output: 535 lm (3000K, 30°) per beam; optics: 7°, 10°, 30°, 70°, 10°x45°, asymmetrical; LED colour: white - 2700K, 3000K, 4000K, 5000K; ingress protection: IP65; impact resistance: IK07; operating temperature: -20°C+45°C; max luminaire temperature: 45°C (Ta 25°C); Glow Wire Test: 960°; photobiological safety: risk group 1 in accordance with EN62471:2006; appliance class: I; weight 2,20 kg; dimensions 170x100x100 mm; accessories: spacer WD0300E / WD0300G / WD0300H / WD0300T.

#### DESCRIZIONE

Applique da esterno, biemissione; su superficie (parete); corpo in alluminio pressofuso lega EN AB 47100, schermo in vetro extrachiaro trasparente temprato serigrafato; finiture: antracite, bianco, cor-ten, grigio, RAL previa richiesta; 10 (5+5) power LED; 20W (10W+10W) - 230Vac; alimentatore integrato; mufola per connessione con cavo di 0,30 m; flusso sorgente: 727 lm (3000K) per emissione; flusso emesso: 535 lm (3000K, 30°) per emissione; ottiche: 7°, 10°, 30°, 70°, 10°x45°, asimmetrica; colore LED: bianco - 2700K, 3000K, 4000K, 5000K; grado di protezione: IP65; grado di resistenza: IK07; temperatura di esercizio: -20°C+45°C; temperatura max apparecchio: 45°C (Ta 25°C); Glow Wire Test: 960°; sicurezza fotobiologica: gruppo rischio 1 secondo EN62471:2006; classe di isolamento I; peso 2,20 kg; dimensioni 170x100x100 mm; accessori: distanziale WD0300E / WD0300G / WD0300H / WD0300T.

**ELECTRICAL FEATURES / CARATTERISTICHE ELETTRICHE**

Power consumption <i>Potenza assorbita</i>	20W
Power supply <i>Alimentazione</i>	230Vac
Power supply unit <i>Alimentatore</i>	built in <i>integrato</i>
Dimming <i>Dimmerazione</i>	not available <i>non disponibile</i>
Connection <i>Collegamento</i>	230Vac 50/60Hz

**LIGHTING FEATURES / CARATTERISTICHE ILLUMINOTECNICHE**

No. and type of LED / <i>N° e tipo di LED</i>	10 (5+5) power LEDs
Average LED life / <i>Duratura media LED</i>	80% after 50.000 h
LED colour <i>Colore LED</i>	white: 2700K, 3000K, 4000K <i>bianco: 2700K, 3000K, 4000K</i>
CRI <i>Indice resa cromatica CRI</i>	>80
Selection <i>Selezione</i>	1/4 ANSI BIN
Optics <i>Ottiche</i>	7°, 10°, 30°, 70°, 10°x45°, asymmetrical <i>7°, 10°, 30°, 70°, 10°x45°, asimmetrica</i>
Lumen output at source <i>Flusso sorgente</i>	727 lm (3000K)
Total delivered lumens <i>Flusso totale apparecchio</i>	521 lm (3000K, 30°) per beam <i>521 lm (3000K, 30°) per emissione</i>

**MECHANICAL FEATURES / CARATTERISTICHE MECCANICHE**

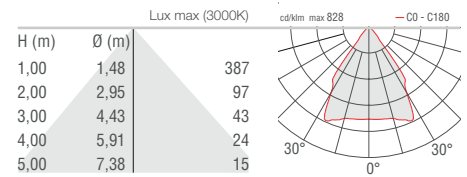
Dimensions / <i>Dimensioni</i>	170x100x100 mm
Weight / <i>Peso</i>	2,20 kg
Finishes <i>Finiture</i>	anthracite, white RAL 9003, cor-ten, grey RAL 9006, RAL on request <i>antracite, bianco RAL 9003, cor-ten, grigio RAL 9006, RAL previa richiesta</i>
Mounting <i>Fissaggio</i>	with fixing plate, screws and plugs <i>con piastra di fissaggio, viti e tasselli</i>
Body material <i>Materiale corpo</i>	die-cast aluminium alloy EN AB 47100 <i>alluminio pressofuso lega EN AB 47100</i>
Screen material <i>Materiale schermo</i>	tempered, serigraphed, transparent extra-clear glass <i>vetro extrachiario trasparente temprato serigrafato</i>

**GENERAL FEATURES / CARATTERISTICHE GENERALI**

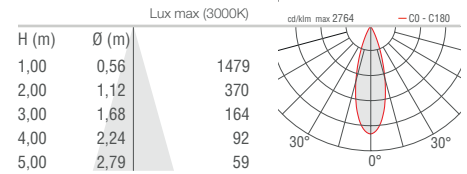
Operating temperature / <i>Temperatura di esercizio</i>	from -20°C to +45°C
Ingress protection / <i>Grado di protezione</i>	IP65
Impact resistance / <i>Grado di resistenza</i>	IK07
Energy efficiency class <i>Classe di consumo energetico</i>	A/A+/A++ (built-in LED lamps) in accordance with UE874/2012 <i>A/A+/A++ (modulo LED integrato) in accordo con UE874/2012</i>
Glow wire test / <i>Glow wire test</i>	960°
Max luminaire temperature <i>Temperatura max apparecchio</i>	45 °C (Ta 25 °C)
Appliance class / <i>Classe di isolamento</i>	class I / <i>classe I</i>
Walkover / <i>Calpestable</i>	no
Drive-over / <i>Carrabile</i>	no
Power cables <i>Cavi di alimentazione</i>	includes connection box with 0,30 m cable <i>muffola per connessione con cavo di 0,30 m</i>
Standard safety <i>Sicurezza standard</i>	PID
Photobiological safety <i>Sicurezza fotobiologica</i>	risk group 1 in accordance with EN62471:2006 <i>gruppo rischio 1 secondo EN62471:2006</i>

**PHOTOMETRIC DATA  
DATI FOTOMETRICI**

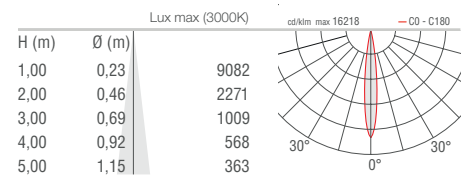
**K - 70°**



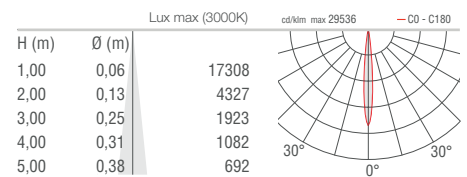
**F - 30°**



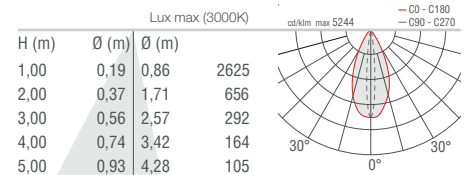
**S - 10°**



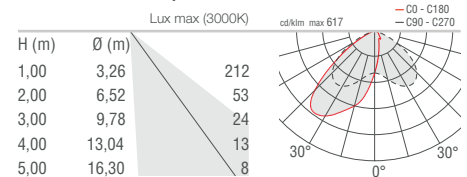
**T - 7°**



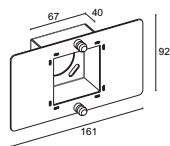
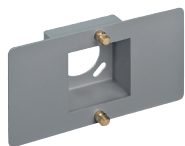
**W - 10°x45°**



**A - Asimmetrica / Asymmetrical**



## For installation / Per installazione



**WD0300F** - Grigio (RAL 9006) / Grey (RAL 9006)

**WD0300E** - Cor-ten

**WD0300T** - Cor-ten

**WD0300H** - Antracite / Anthracite

Distanziale / Spacer

L&L Luce&Light SRL reserves the right to change the information contained in this document at any time without prior notice being given.

*Le informazioni contenute nel presente documento possono essere modificate in qualsiasi momento senza preavviso e non comportano l'assunzione, nemmeno implicita, di alcuna obbligazione da parte della L&L Luce&Light srl.*