



Product designation

Assembled industrial relays
HR604C

Product type designation

Contact characteristics

Contact configuration 4 C/O

Rated insulation voltage U_i IEC/EN V 500

Rated impulse withstand voltage U_{imp} kV 4

IEC Conventional free air thermal current I_{th} A 5

Rated current (I_n) A 5

Relay control voltage V 24VAC

Max contrrollable power in AC-1 W 5

Rated operating power AC-1 VA 1250

Rated operating power AC-15 230 VAC VA 150

Single-phase motor control 230VAC kW 0.37

Rated operating current DC-1
30V A 8
110V A 0.3
220V A 0.1

Minimum switching load V / mA 5 / 100

Contact impedance mΩ 100

Contact material Ag/Ni

Operating times

Closing ms <25

Opening ms <25

Operations

Mechanical life cycles 20000000

Electrical life AC1 cycles 100000

Coil characteristics

Average coil consumption AC at 20°C VA 1.7

Average coil consumption DC at 20°C W 1.1

Operating range
Closing % U_n 70...110
Opening % U_n 20...55

Maximum cycle frequency cycles/h 3600

Mechanical features

Max socket terminal tightening torque Nm 0.6

Socket screw tightening tool (cross / flat blade) PH1 / 4.5mm

Conductor section
AWG/Kcmil
min 20
max 14

IEC

min	mm ²	0.5
max	mm ²	2.5

Operating position

normal	Any
--------	-----

Fixing

On 35mm DIN rail and with screw

Ambient conditions

Temperature

Operating temperature

min	°C	-40
max	°C	+70

Storage temperature

min	°C	-40
max	°C	+80

Other features

Indication

Yes

Mechanical contact position indicator

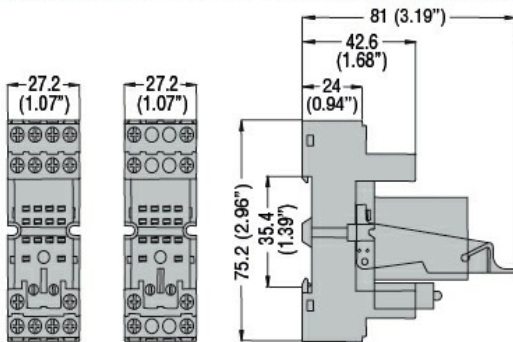
Yes

Mechanical test actuator

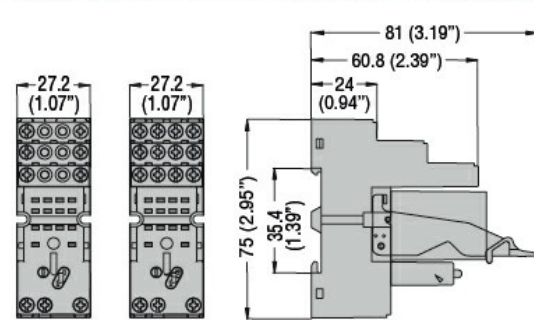
Yes

Dimensions

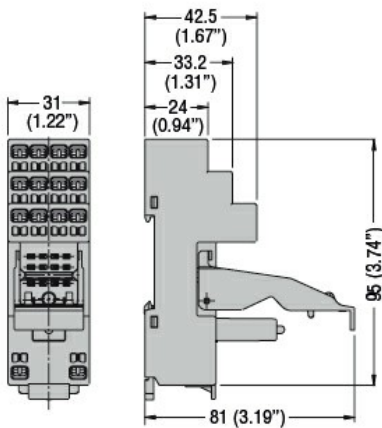
HR60 2C... with socket HR6XS21 - HR6XS22



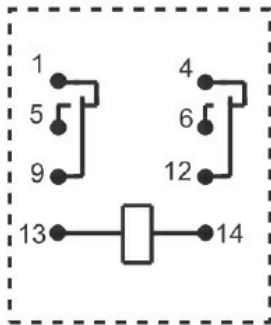
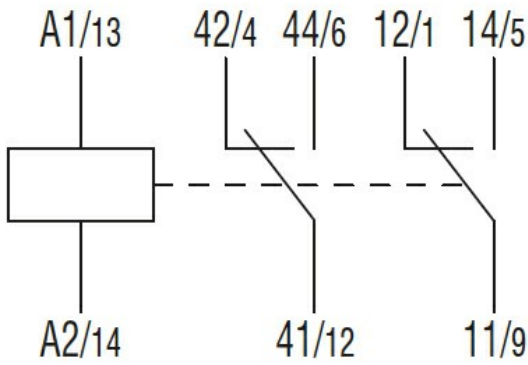
HR60 4C... with socket HR6XS41 - HR6XS42



HR60 2C... - HR60 4C... with socket HR6XS21S - HR6XS41S



Wiring diagrams



Certifications and compliance

Compliance

IEC/EN 61810

ETIM classification

ETIM 8.0

EC001437 -
 Switching relay