



Product designation

Product type designation

Auxiliary  
contactor  
BF00

### Contact characteristics

Number of poles	Nr.	4
Rated insulation voltage $U_i$ IEC/EN	V	690
Rated impulse withstand voltage $U_{imp}$	kV	6

Operational frequency

min	Hz	25
max	Hz	400

IEC Conventional free air thermal current  $I_{th}$

A	10
---	----

Protection fuse

gG (IEC)	A	25
----------	---	----

Tightening torque for terminals

min	Nm	1.5
max	Nm	1.8
min	lbin	1.1
max	lbin	1.5

Tightening torque for coil terminal

min	Nm	0.8
max	Nm	1
min	lbin	0.8
max	lbin	0.74

Max number of wires simultaneously connectable

Nr.	2
-----	---

Conductor section

AWG/Kcmil

max	10
-----	----

Flexible w/o lug conductor section

min	mm <sup>2</sup>	1
max	mm <sup>2</sup>	6

Flexible c/w lug conductor section

min	mm <sup>2</sup>	1
max	mm <sup>2</sup>	4

Flexible with insulated spade lug conductor section

min	mm <sup>2</sup>	1
max	mm <sup>2</sup>	4

Power terminal protection according to IEC/EN 60529

IP20 when  
properly wired

### Mechanical features

Operating position

normal allowable	Vertical plan ±30°
---------------------	-----------------------

Fixing

Screw / DIN rail  
35mm

Weight

g	353
---	-----

### Auxiliary contact characteristics

Thermal current I <sub>th</sub>	A		10
IEC/EN 60947-5-1 designation	A600 - P600		
Operating current AC15	230V	A	3
	400V	A	1.9
	500V	A	1.4
Operating current DC12	110V	A	5.7
Operating current DC13	24V	A	5.7
	48V	A	2.9
	60V	A	2.3
	110V	A	1.25
	125V	A	1.1
	220V	A	0.55
	600V	A	0.2
Operations			
Mechanical life	cycles		20000000
Safety related data			
Performance level B10d according to EN/ISO 13489-1	mechanical load	cycles	20000000
EMC compatibility	yes		
AC coil operating			
Rated AC voltage at 60Hz	V		24
AC operating voltage	of 60Hz coil powered at 60Hz		
	pick-up		
	min	%Us	80
	max	%Us	110
	drop-out		
	min	%Us	20
	max	%Us	55
AC average coil consumption at 20°C	of 60Hz coil powered at 60Hz		
	in-rush	VA	75
	holding	VA	9
Dissipation at holding ≤20°C 50Hz	W		2.5
Max cycles frequency			
Mechanical operation	cycles/h		3600
Operating times			
Average time for U <sub>s</sub> control	in AC		
	Closing NO		
	min	ms	8
	max	ms	24
	Opening NO		
	min	ms	10
	max	ms	20
	Closing NC		
	min	ms	9
	max	ms	25
	Opening NC		
	min	ms	9
	max	ms	15

#### UL technical data

Rated operational voltage AC (UL)	V	600
General USE		
Auxiliary contacts		
AC current	A	10
Contact rating of auxiliary contacts according to UL		A600 - P600

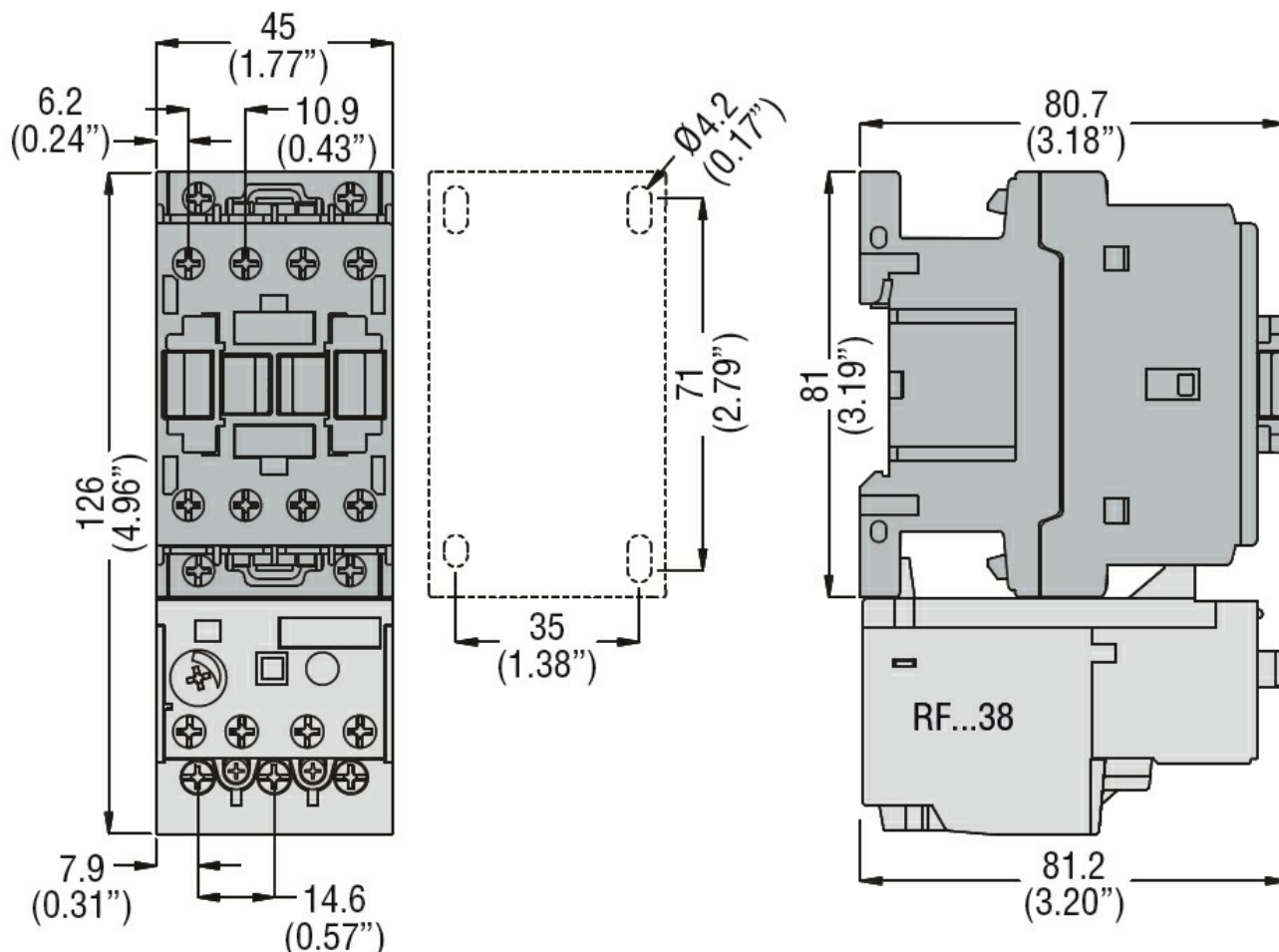
#### Ambient conditions

Temperature			
Operating temperature			
	min	°C	-50
	max	°C	70
Storage temperature			
	min	°C	-60
	max	°C	80
Max altitude	m		3000

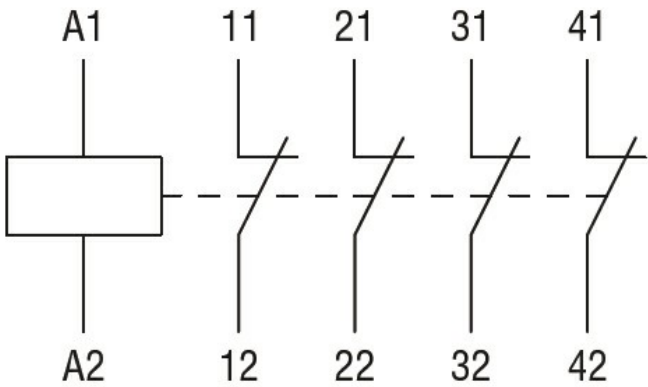
#### Resistance & Protection

Pollution degree		3
------------------	--	---

#### Dimensions



#### Wiring diagrams



Certifications and compliance

Compliance	CSA C22.2 n° 60947-1
	CSA C22.2 n° 60947-5-1
	IEC/EN 60947-1
	IEC/EN 60947-5-1
	UL 60947-1
	UL 60947-5-1

Certificates	CCC
	cULus
	EAC

ETIM classification

ETIM 8.0	EC000196 - Contactor relay
----------	-------------------------------