

| | | | |
|--|---|----|------|
| Product designation | Enclosed rotary cam switch | | |
| Product type designation | 7GN63 | | |
| General characteristics | | | |
| Switching diagram | 12 - Star-delta motor starter switch | | |
| N° of elements | 4 | | |
| Mounting form | P - Plastic enclosure with black handle | | |
| Contact characteristics | | | |
| Rated insulation voltage Ui | IEC/EN | V | 690 |
| | UL/CSA | V | 600 |
| Rated impulse withstand voltage Uimp | | kV | 6 |
| Conventional free air thermal current Ith | IEC/EN | A | 63 |
| | UL/CSA | A | 60 |
| Rated operational voltage | | V | 480 |
| Rated operational impulse voltage | | kV | 4 |
| Maximum fuse size for short-circuit protection In (gG) | 10kA | A | 63 |
| | 15kA | A | 63 |
| | 25kA | A | 63 |
| | 50kA | A | 63 |
| | 63kA | A | 63 |
| Rated short time current Icw | 1 s | kA | 1600 |
| Conductivity | 10/5 mA/V | | |
| Operational current Ie IEC/EN | | | |
| AC1/AC21A | | A | 63 |
| AC15 | 110V | A | 32 |
| | 220/230V | A | 25 |
| | 380/400V | A | 15 |
| | 660/690V | A | 4 |
| Rated operational power in AC | | | |
| Three-phase AC-3 | 220/230V | kW | 11 |
| | 380/440V | kW | 18.5 |
| | 500/690V | kW | 18.5 |
| Single-phase AC-3 | 110V | kW | 3.7 |
| | 220/230V | kW | 6.5 |
| | 380/440V | kW | 11.5 |
| Three-phase AC23A | 220/230V | kW | 12.5 |
| | 380/440V | kW | 30 |
| | 500/690V | kW | 30 |
| Single-phase AC23A | 110V | kW | 3.7 |
| | 220/230V | kW | 7.5 |

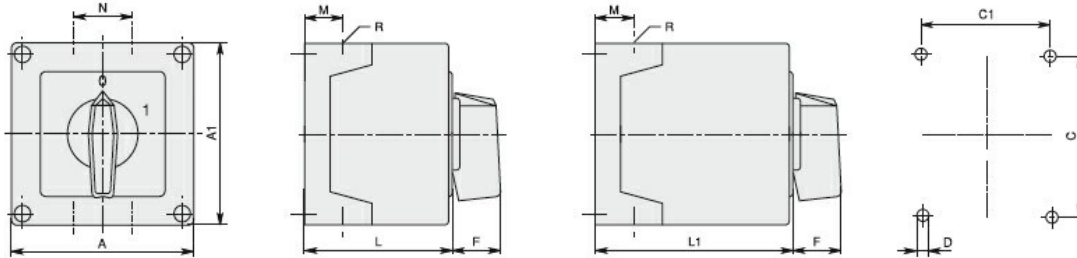
| | | | | |
|--|--|----------|-----------------|-------------------|
| | | 380/440V | kW | 12.5 |
| Rated operational current in DC | | | | |
| DC21A | | 48V | A | 63 |
| | | 60V | A | 50 |
| | | 110V | A | 8 |
| | | 220V | A | 1 |
| DC23A (poles in series) | | 24V | A | 50 (1) |
| | | 48V | A | 50 (2) |
| | | 60V | A | 50 (3) |
| | | 110V | A | 25 (3) |
| | | 220V | A | 15 (4) |
| DC13 | | 24V | A | 63 |
| | | 48V | A | 40 |
| | | 60V | A | 28 |
| | | 110V | A | 3.3 |
| Power dissipation | | | W | 3.4 |
| Mechanical features | | | | |
| Terminals screw | | | | M5 |
| Tightening torque for terminals max | | | Nm | 2 |
| Conductor size | | | | |
| AWG - Rigid cable | | min | AWG | 14 |
| | | Max | AWG | 6 |
| AWG - Flexible cable | | min | AWG | 14 |
| | | Max | AWG | 8 |
| Conductor size (IEC) - Flexible cable | | min | mm ² | 2.5 |
| | | Max | mm ² | 10 |
| Conductor size (IEC) - Rigid cable | | min | mm ² | 2.5 |
| | | Max | mm ² | 16 |
| Mechanical life | | | cycles | 5x10 ⁶ |
| UL technical data | | | | |
| Motor power for direct-on-line control | | | | |
| for three-phase motor | | 120V | HP | 7.5 |
| | | 240V | HP | 15 |
| | | 480V | HP | 25 |
| | | 600V | HP | 25 |
| for single-phase motor | | 120V | HP | 3 |
| | | 240V | HP | 10 |
| Ambient conditions | | | | |
| Temperature | | | | |
| Operating temperature | | min | °C | -25 |
| | | max | °C | +55 |
| Storage temperature | | min | °C | -40 |
| | | max | °C | +70 |

Resistance & Protection

Frontal IP degree IP65

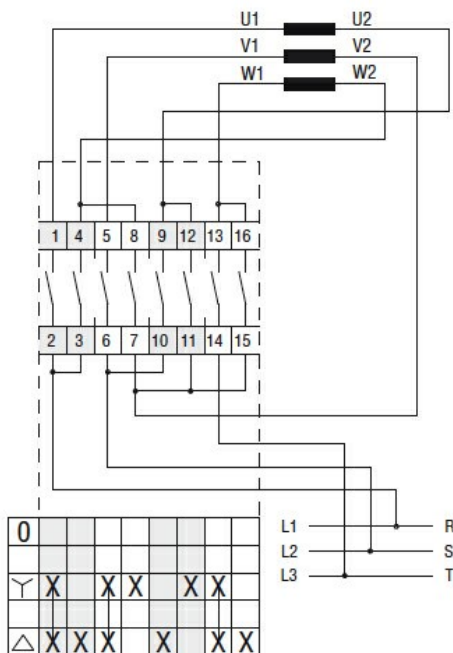
Terminals IP degree IP00

Dimensions



| Series | Enclosure size | Number of elements | | Dimensions | | | | | | | | | | Cable entry | Protection degree |
|--------|----------------|--------------------|-------|------------|-----|------|-----|-----|----|----|------|------|-------|------------------|-------------------|
| | | L | L1 | A | A1 | C | C1 | D | F | M | N | L | L1 | | |
| 7GN12 | 75x75 | 1 - 2 | 3 - 4 | 75 | 75 | 50 | 64 | 4.5 | 19 | 14 | 28 | 57.5 | 79.8 | 4xPG13.5 | IP65 |
| 7GN20 | | 1 - 2 | 3 - 4 | | | | | | | | | | | | |
| 7GN25 | | 1 | 2 - 3 | | | | | | | | | | | | |
| 7GN12 | 90x90 | 1 - 3 | 4 - 6 | 90 | 90 | 79 | 63 | 4.5 | 25 | 19 | 30 | 71.3 | 98.3 | 4xPG16 | IP65 |
| 7GN20 | | 1 - 3 | 4 - 6 | | | | | | | | | | | | |
| 7GN25 | | 1 - 2 | 3 - 4 | | | | | | | | | | | | |
| 7GN32 | | 1 - 2 | 3 - 4 | | | | | | | | | | | | |
| 7GN40 | 110x110 | 1 | 2 - 3 | 110 | 110 | 98.4 | 83 | 4.5 | 32 | 21 | 39.5 | 85.5 | 119.5 | 4xPG21 | IP65 |
| 7GN12 | | 1 - 4 | 5 - 8 | | | | | | | | | | | | |
| 7GN20 | | 1 - 4 | 5 - 8 | | | | | | | | | | | | |
| 7GN25 | | 1 - 3 | 4 - 5 | | | | | | | | | | | | |
| 7GN32 | | 1 - 3 | 4 - 5 | | | | | | | | | | | | |
| 7GN40 | 125x175 | 1 - 2 | 3 - 5 | 125 | 175 | 146 | 112 | 5.5 | 32 | 21 | 68 | 84.3 | 118.3 | 4xPG21 2xPG11 | IP65 |
| 7GN63 | | 1 - 2 | 3 - 4 | | | | | | | | | | | | |
| 7GN125 | | 1 | 2 | | | | | | | | | | | | |
| 7GN32 | | 1 - 5 | 6 - 8 | | | | | | | | | | | | |
| 7GN40 | 180x254 | 1 - 4 | 5 - 7 | 180 | 254 | 120 | 190 | 5.5 | 32 | 35 | 76 | 121 | 175 | 4xPG29 2xPG11 | IP65 |
| 7GN63 | | 1 - 3 | 4 - 6 | | | | | | | | | | | | |
| 7GN125 | | 1 - 2 | 3 - 4 | | | | | | | | | | | | |

Wiring diagrams



Certifications and compliance

Compliance

ENCLOSED ROTARY CAM SWITCH 7GN SERIES, STAR-DELTA MOTOR STARTER SWITCH
63A IN PLASTIC ENCLOSURE 125X175MM WITH BLACK HANDLE

| |
|---------------------|
| IEC/EN/BS 60947-1 |
| IEC/EN/BS 60947-3 |
| IEC/EN/BS 60947-5-1 |

Certificates

EAC

ETIM classification

ETIM 8.0

EC001029 -
Selector switch,
complete