



### Contact characteristics

Number of poles	Nr.	4
Rated insulation voltage $U_i$ IEC/EN	V	690
Rated impulse withstand voltage $U_{imp}$	kV	6
IEC Conventional free air thermal current $I_{th} \leq 40^\circ C$	A	10
Tightening torque for terminals	min	Nm 0.8
	max	Nm 1
	min	Ibin 7
	max	Ibin 9
Max number of wires simultaneously connectable	Nr.	2
Conductor section	AWG/Kcmil	max 14
	Flexible w/o lug conductor section	min mm <sup>2</sup> 0.75
max mm <sup>2</sup> 2.5		
Flexible c/w lug conductor section	min mm <sup>2</sup> 0.75	
	max mm <sup>2</sup> 2.5	
Flexible with insulated spade lug conductor section	min mm <sup>2</sup> 0.75	
	max mm <sup>2</sup> 2.5	

### Mechanical features

Operating position	normal allowable	On vertical plane Any
Fixing		Front centre mounting
Weight	g	48
Terminals screw		Screw

### Auxiliary contact characteristics

Type of contact		1NO+3NC
Thermal current $I_{th}$	A	10
IEC/EN 60947-5-1 designation		A600 - Q600
Operating current AC15	230V	A 3
	400V	A 1.9
	500V	A 1.4
Operating current DC13	24V	A 3
	48V	A 1.5
	60V	A 1.2
	110V	A 0.6
	125V	A 0.55

220V	A	0.27
600V	A	0.1

**Safety related data**

Mirror contacts according to IEC/EN 609474-4-1 annex F	Yes
Mechanically linked contacts according to IEC/EN 609474-5-1 annex L	Yes

**Electrical characteristics**

Conductivity	5V 10 mA
UL/CSA and IEC/EN 60947-5-1 designation	A600 Q600

Operating current AC15

120V	A	6
240V	A	3
480V	A	1.5
600V	A	1.2

Operating current DC13

12V	A	10
250V	A	0.27
440V	A	0.15
500V	A	0.13

**UL technical data**

Rated operational voltage AC (UL)	V	600
-----------------------------------	---	-----

**Ambient conditions**

Temperature

Operating temperature

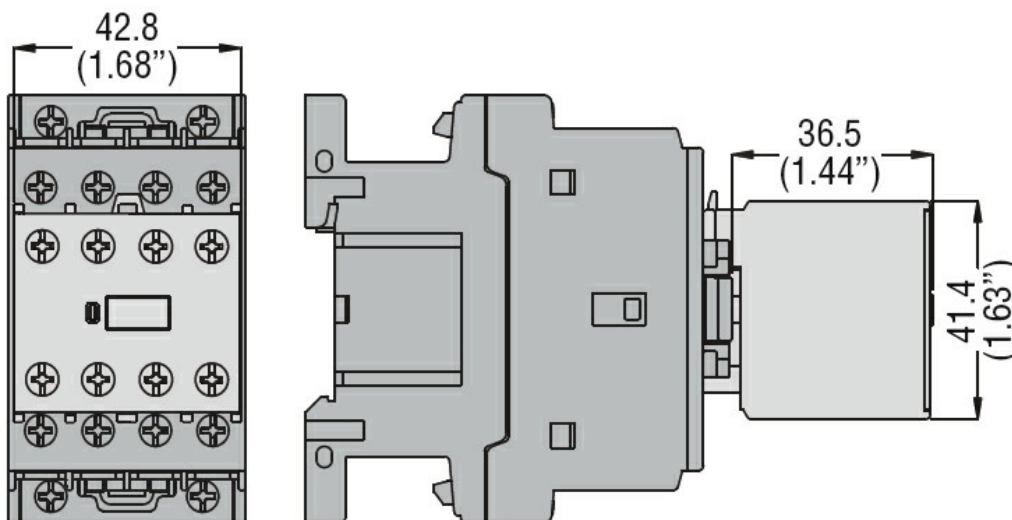
min	°C	-50
max	°C	+70

Storage temperature

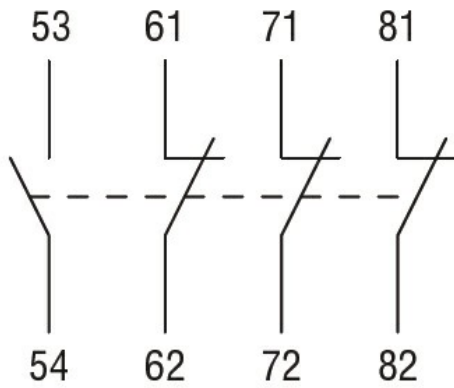
min	°C	-60
max	°C	+80

Max altitude	m	3000
--------------	---	------

**Dimensions**



**Wiring diagrams**



### Certifications and compliance

#### Compliance

CSA C22.2 n° 60947-1

CSA C22.2 n° 60947-5-1

IEC/EN 60335-2-89

IEC/EN 60947-1

IEC/EN 60947-5-1

UL 60947-1

UL 60947-5-1

#### Certificates

CCC

CSA C22.2 n. 60335-2-40:22 LZGH A2L

CSA C22.2 No. 60335-2-89:21 LZGH A2L

cULus

EAC

UL 60335-2-40 LZGH A2L

UL 60335-2-89 LZGH A2L

### ETIM classification

ETIM 8.0

EC000041 -  
Auxiliary contact  
block