



### Contact characteristics

Number of poles	Nr.	4
Rated insulation voltage $U_i$ IEC/EN	V	690
Rated impulse withstand voltage $U_{imp}$	kV	6
Operational frequency	min	Hz 25
	max	Hz 400
IEC Conventional free air thermal current $I_{th} \leq 40^\circ C$	A	10
Short-time allowable current for 10s (IEC/EN60947-1)	A	0
Protection fuse	gG (IEC)	A 16
	Conductor section	
	AWG/Kcmil	
	max	12

### Mechanical features

Operating position	normal	Vertical plan
	allowable	$\pm 30^\circ$
Fixing		Screw / DIN rail 35mm
Weight	g	225

### Auxiliary contact characteristics

Thermal current $I_{th}$	A	10
IEC/EN 60947-5-1 designation		A600 - Q600
Operating current AC15	230V	A 3
	400V	A 1.9
	500V	A 1.4
Operating current DC12	110V	A 2.9
	Operating current DC13	
	24V	A 2.9
	48V	A 1.4
	60V	A 1.1
	125V	A 0.3
	220V	A 0.1
	600V	A 0.6

### Operations

Mechanical life	cycles	20000000
-----------------	--------	----------

### Safety related data

Performance level B10d according to EN/ISO 13489-1	mechanical load	cycles	20000000
----------------------------------------------------	-----------------	--------	----------

EMC compatibility		yes
-------------------	--	-----

### DC coil operating

DC rated control voltage	V	60
--------------------------	---	----

DC operating voltage

pick-up	min	%Us	75
	max	%Us	115
drop-out	min	%Us	10
	max	%Us	25

Average coil consumption ≤20°C

in-rush	W	3.2
holding	W	3.2

Max cycles frequency

Mechanical operation	cycles/h	3600
----------------------	----------	------

Operating times

Average time for Us control

in AC

Closing NO	min	ms	12
	max	ms	21
Opening NO	min	ms	9
	max	ms	18
Closing NC	min	ms	17
	max	ms	26
Opening NC	min	ms	7
	max	ms	17

in DC

Closing NO	min	ms	18
	max	ms	25
Opening NO	min	ms	2
	max	ms	3
Closing NC	min	ms	3
	max	ms	5
Opening NC	min	ms	11
	max	ms	17

UL technical data

Rated operational voltage AC (UL)	V	600
Contact rating of auxiliary contacts according to UL		A600 - Q600

Ambient conditions

Temperature

Operating temperature

min	°C	-50
max	°C	+70

Storage temperature

min	°C	-60
max	°C	+80

Max altitude

m	3000
---	------

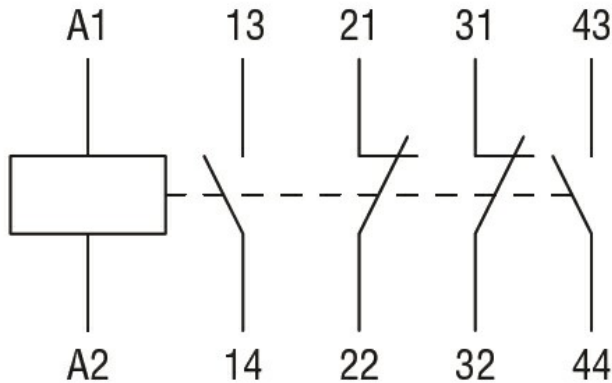
Resistance & Protection

Pollution degree	3
------------------	---

**Dimensions**



**Wiring diagrams**



**Certifications and compliance**

**Compliance**

CSA C22.2 n° 60947-1  
CSA C22.2 n° 60947-5-1  
IEC/EN 60947-1  
IEC/EN 60947-5-1  
UL 60947-1  
UL 60947-5-1

**Certificates**

CCC  
cULus  
EAC

**ETIM classification**

ETIM 8.0

EC000196 -  
Contactor relay