



Contact characteristics

Number of poles	Nr.	4
Rated insulation voltage U_i IEC/EN	V	690
Rated impulse withstand voltage U_{imp}	kV	6
Operational frequency	min	Hz 25
	max	Hz 400
IEC Conventional free air thermal current $I_{th} \leq 40^\circ\text{C}$	A	10
Protection fuse	gG (IEC)	A 16
	Tightening torque for terminals	min Nm 0.8
Tightening torque for terminals	max Nm	1
	min lbin	9
	max lbin	9
	Tightening torque for coil terminal	min Nm 0.8
Tightening torque for coil terminal	max Nm	1
	min lbin	9
	max lbin	9
	Max number of wires simultaneously connectable	Nr.
Conductor section	AWG/Kcmil	max 12
	Flexible w/o lug conductor section	min mm^2
max mm^2		2.5
Flexible c/w lug conductor section	min mm^2	1.5
	max mm^2	2.5
Flexible with insulated spade lug conductor section	min mm^2	1.5
	max mm^2	2.5
Power terminal protection according to IEC/EN 60529		IP20 when properly wired

Mechanical features

Operating position	normal allowable	Vertical plan $\pm 30^\circ$
	Fixing	Screw / DIN rail 35mm
Weight	g	217

Auxiliary contact characteristics

Thermal current I_{th}	A	10
IEC/EN 60947-5-1 designation		A600 - Q600

Operating current AC15	230V	A	3
	400V	A	1.9
	500V	A	1.4
Operating current DC12	110V	A	2.9
Operating current DC13	24V	A	2.9
	48V	A	1.4
	60V	A	1.2
	110V	A	0.6
	125V	A	0.55
	220V	A	0.3
	600V	A	0.1

Operations

Mechanical life cycles 20000000

Safety related data

Performance level B10d according to EN/ISO 13489-1 mechanical load cycles 20000000

EMC compatibility yes

DC coil operating

DC rated control voltage V 12

DC operating voltage	pick-up	min	%Us	75
		max	%Us	115
	drop-out	min	%Us	10
		max	%Us	20

Average coil consumption $\leq 20^{\circ}\text{C}$ in-rush W 3.2
holding W 3.2

Max cycles frequency

Mechanical operation cycles/h 3600

Operating times

Average time for Us control in AC	Closing NO	min	ms	12	
		max	ms	21	
	Opening NO	min	ms	9	
		max	ms	18	
	Closing NC	min	ms	17	
		max	ms	26	
	Opening NC	min	ms	7	
		max	ms	17	
	in DC	Closing NO	min	ms	18
			max	ms	25
		Opening NO	min	ms	18
			max	ms	25

	min	ms	2
	max	ms	3
Closing NC			
	min	ms	3
	max	ms	5
Opening NC			
	min	ms	11
	max	ms	17

UL technical data

Rated operational voltage AC (UL)	V	600
General USE		

Contactor

AC current	A	10
------------	---	----

Contact rating of auxiliary contacts according to UL	A600 - Q600
--	-------------

Ambient conditions

Temperature

Operating temperature

min	°C	-50
max	°C	+70

Storage temperature

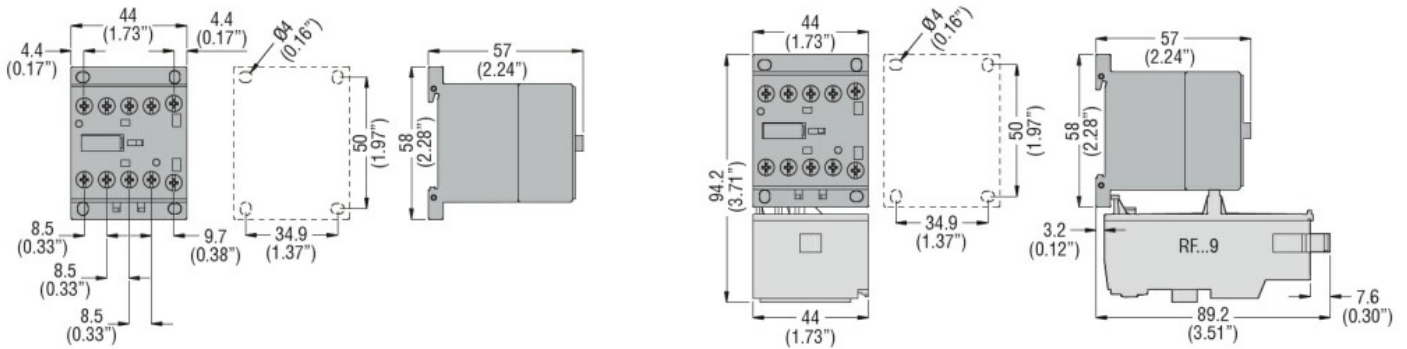
min	°C	-60
max	°C	+80

Max altitude	m	3000
--------------	---	------

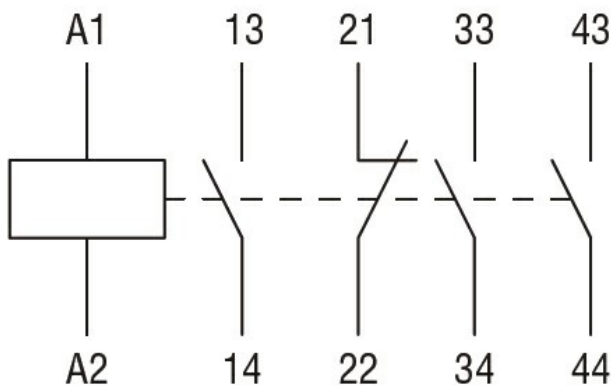
Resistance & Protection

Pollution degree	3
------------------	---

Dimensions



Wiring diagrams



Certifications and compliance

Compliance

CSA C22.2 n° 60947-1

CSA C22.2 n° 60947-5-1

IEC/EN 60335-2-89

IEC/EN 60947-1

IEC/EN 60947-5-1

UL 60947-1

UL 60947-5-1

Certificates

CSA C22.2 n. 60335-2-40:22 LZGH A2L

CSA C22.2 No. 60335-2-89:21 LZGH A2L

cULus

EAC

UL 60335-2-40 LZGH A2L

UL 60335-2-89 LZGH A2L

ETIM classification

ETIM 8.0

EC000196 -
Contactor relay