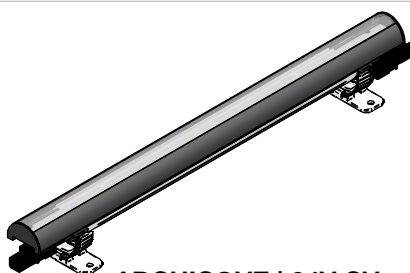


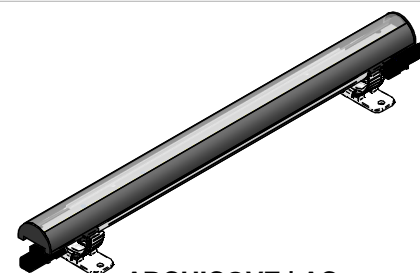
SERIE | SERIES: ARCHICOVE

BRAND: i-L^èD



ARCHICOVE | 24V CV

A

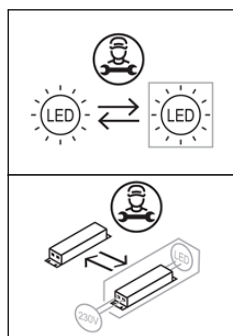


ARCHICOVE | AC

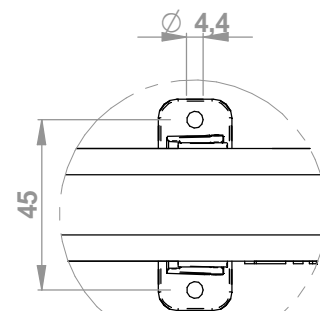
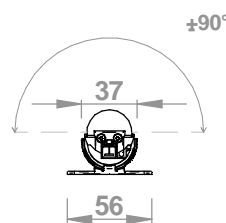
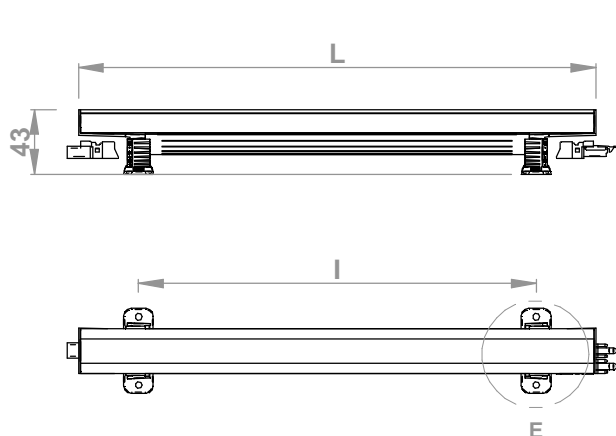
B

CODICI
CODES

CODE	L [mm]	POWER	INPUT	WEIGHT [Kg]	SAFETY CLASS	IP	IK	CRI	Energy class light source Temperature color LED			N° Light Sources
									2700	3000	4000	
94110	342	9 W DC	24 V CV	0,19	3	40	8	80	E	E	E	1
94115	1022	32 W DC		0,4	3				E	E	E	3
92023	342	12 W AC	220-240 V AC	0,2	2				E	E	E	1
92025	1022	35 W AC		0,5	2				E	E	E	3



DIMENSIONI / DIMENSIONS

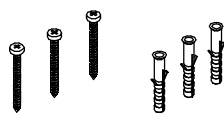


DETTAGLIO E
DETAIL E

CODE	L [mm]	I [mm]
94110	342	263
94115	1022	943
92023	342	263
92025	1022	943

ACCESSORI NON INCLUSI / NOT INCLUDED ACCESSORIES

VITI, TASSELLI
SCREWS, ANCHORS



ALIMENTAZIONE 24V CV
POWER IN 24 V CV



98879

250mm | 2x1.5mm²

PROLUNGA 24V CV
EXTENTION CABLE 24 V CV



98878

1000mm | 2x1.5mm²

ALIMENTAZIONE 190-250V AC
POWER IN 190-250V AC



98713

250mm | 2x1.5mm²

PROLUNGA 190-250V AC
EXTENTION CABLE 190-230V AC



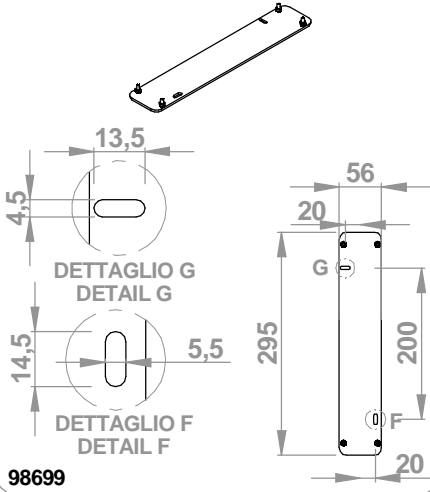
98716

1000mm | 2x1.5mm²

SERIE | SERIES: ARCHICOVE

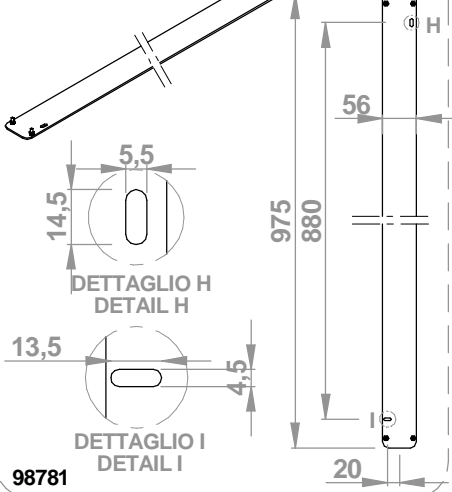
BRAND: i-LèD

PIASTRA DI SUPPORTO
FIXING BRACKET

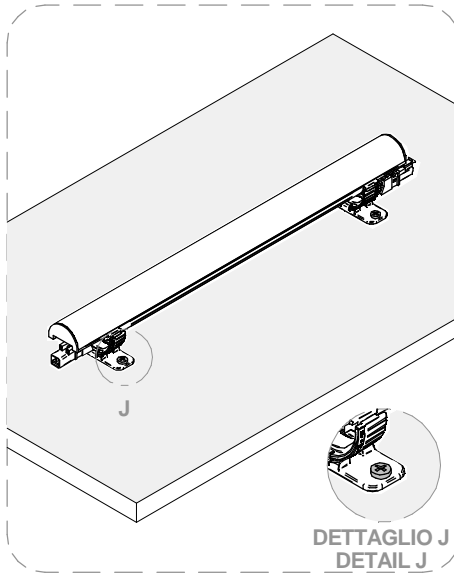
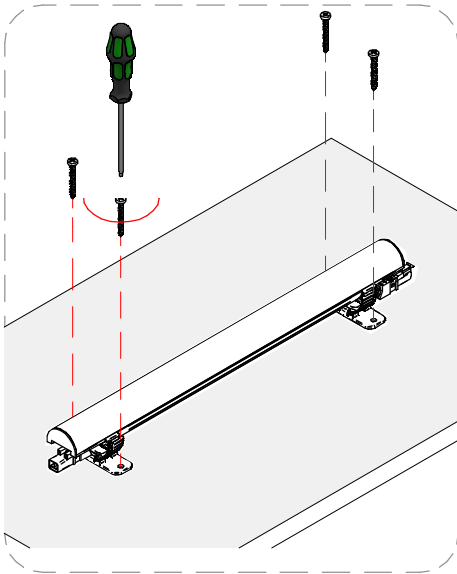
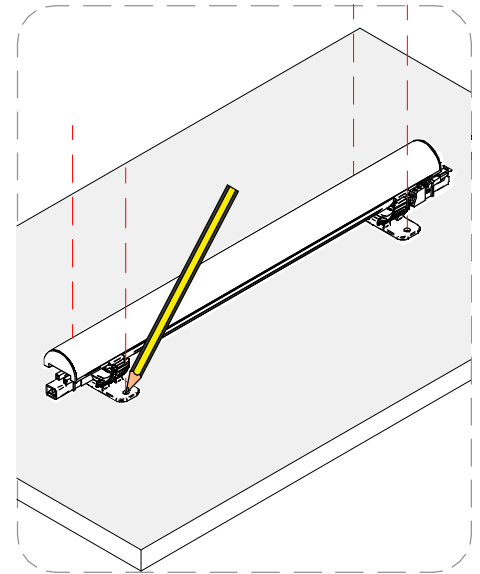


98699

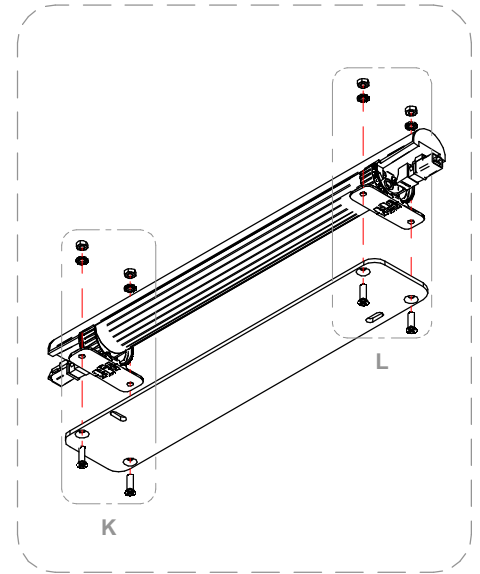
PIASTRA DI SUPPORTO
FIXING BRACKET



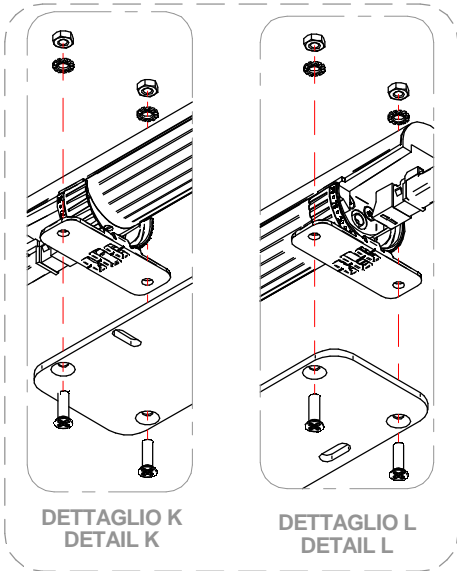
98781



DETTAGLIO J
DETAIL J

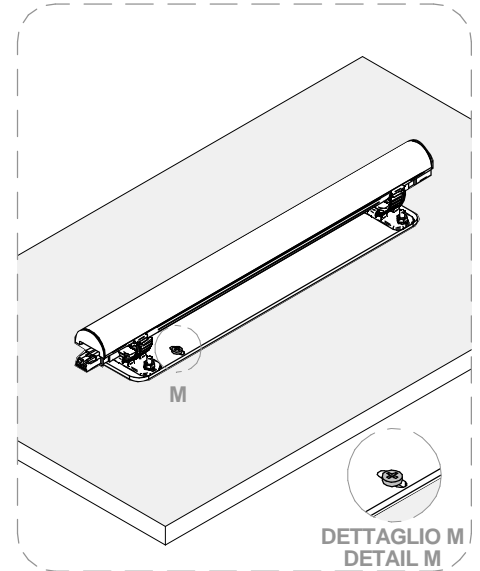
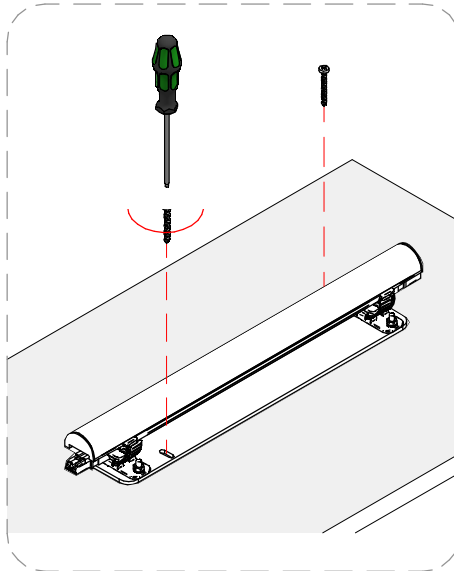


K



DETTAGLIO K
DETAIL K

DETTAGLIO L
DETAIL L



DETTAGLIO M
DETAIL M

SERIE | SERIES: ARCHICOVE

BRAND: i-LèD

MARRONE / BROWN = LINEA / LINE

AZZURRO / LIGHT BLUE = NEUTRO / NEUTRAL

GIALLO-VERDE / YELLOW-GREEN = TERRA / EARTH CPC | PE

CABLAGGIO / WIRING

1

TUTTE LE OPERAZIONI DI COLLEGAMENTO ALLA RETE ELETTRICA DEVONO ESSERE CONDOTTE IN MANCANZA DI TENSIONE
ALL THE WIRING OPERATION MUST BE PERFORMED WITH MCB IN OFF POSITION

2

SE IL PRODOTTO E' DEFINITO IN CLASSE 1, IL CONDUTTORE DI MESSA A TERRA DI PROTEZIONE DEVE ESSERE SEMPRE COLLEGATO
IF THE FITTING IS CLASS 1 RATED, THE CPC | EARTH | PE CONDUCTOR MUST BE CONNECTED

3

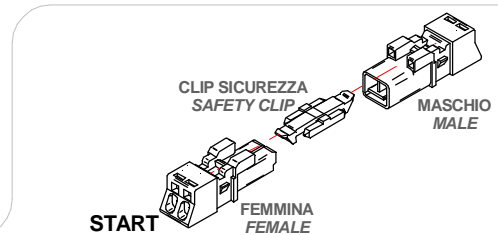
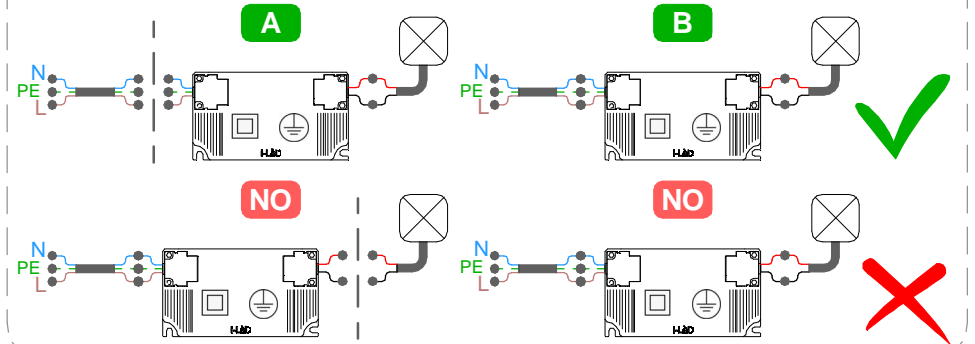
SE L'IMPIANTO E' STATO COMPLETATO ED E' IN SICUREZZA, PUO' ESSERE ALIMENTATO
WHEN THE CIRCUIT IS COMPLETED AND SAFE, MCB CAN BE SET IN ON POSITION



SE IL PRODOTTO E' DEFINITO IN CLASSE 3, IL CIRCUITO SECONDARIO A BASSA TENSIONE DEVE ESSERE COLLEGATO ALL'ALIMENTATORE PRIMA CHE QUESTO SIA SOTTO TENSIONE

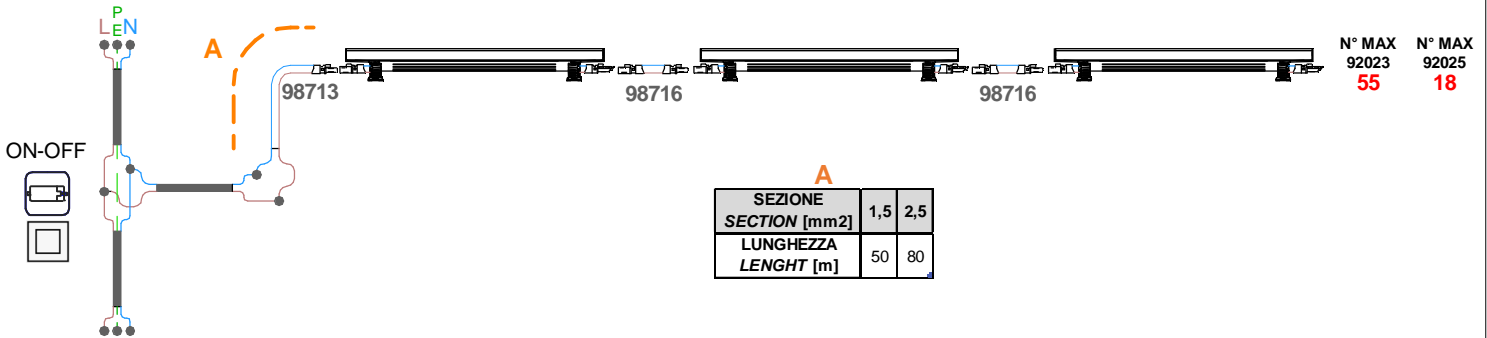
IF THE FITTING IS CLASS 3 RATED, THE LOW VOLTAGE CIRCUIT MUST BE WIRED BEFORE THE POWER SUPPLY IS POWERED ON

SE IL CARICO VENISSE COLLEGATO AD ALIMENTATORE SOTTO TENSIONE, I PRODOTTI POTREBBERO DANNEGGIARSI, SUBENDO UN DANNO DA SOVRATENSIONE
IF THE LOAD IS WIRED TO AN ALREADY ON POWER SUPPLY, THE FITTINGS COULD BE DAMAGED BY VOLTAGE SURGE



**CABLAGGIO IN PARALLELO | PARALLEL WIRING
TENSIONE DI RETE | MAINS VOLTAGE**

AC



**CABLAGGIO IN PARALLELO | TENSIONE COSTANTE
PARALLEL WIRING | CONSTANT VOLTAGE**

CV

