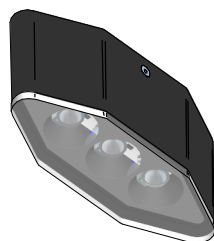
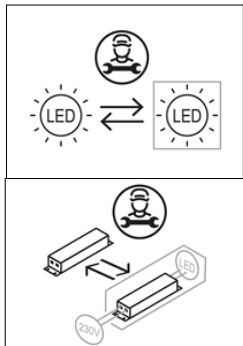


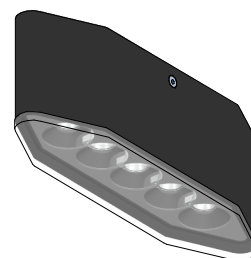
SERIE / SERIES: SKIN_S, SKIN_F, SKIN_FL, SKIN_Y

BRAND: i-L^{ED}



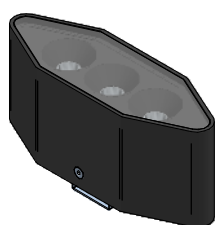
SKIN_S
6 W DC - 6,7 W AC
9,6 W DC - 11 W AC

A



SKIN_S
10 W DC - 11,2 W AC
16,2 W DC - 18 W AC

B



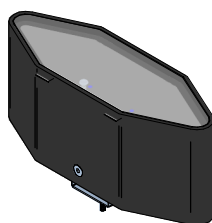
SKIN_F
6 W DC - 6,7 W AC
9,6 W DC - 12 W AC

C



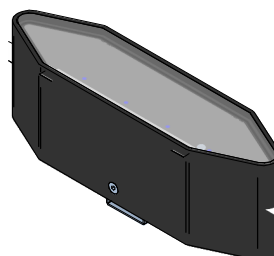
SKIN_F
10 W DC - 11,2 W AC
16,2 W DC - 18 W AC

D



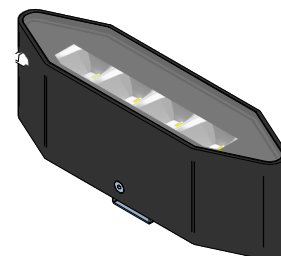
SKIN_FL
2,1 W DC - 2,7 W AC

E



SKIN_FL
3,2 W DC - 3,8 W AC

F



SKIN_Y
12,2 W DC - 14 W AC

G

CODICI | CODES

CODE	Type	Input [V]	Dimensions [mm]	Power [W]	Weight [Kg]	Walk Over [Kg]	Drive Over [Kg]	Safety Class	IP	CRI	CCT [°K] - Energy Class			N° Light Source	
											2700	3000	4000		
83859	Skin_F	198-264	70x166x57	8,5	1,3	500	-	2	67	80	E	E	E	1	
83860															
83861	Skin_S														
83862	Skin_F			12	1,3	500									
83863				12											
83864	Skin_S			8,5	1,4	-									
83865	Skin_FL		2,5	1	-										
83866	Skin_F		70x220x57	18	1,6	500									
83867											1,5	-			
83868	Skin_S				11,2	1,6					500	E	E		E
83869	Skin_F														
83870															
83871	Skin_S														
83872	Skin_FL		3,8	1,7	-	D					D	D			
83873	Skin_Y	14	1,6	500	F		E	F							

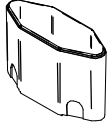
*L'insieme faretto + controcassa una volta installati garantisce la resistenza al carico statico pari a quanto riportato in tabella.
*Once installed, the spotlight + housing assembly guarantees static load resistance equal to the values given in the table.

SERIE / SERIES: SKIN_S, SKIN_F, SKIN_FL, SKIN_Y

BRAND: i-LED

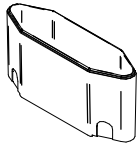
ACCESSORI NON INCLUSI / NOT INCLUDED ACCESSORIES

CONTROCASSA INSTALLAZIONE
SEMIRECESSA MURATURA | L 175mm
CONCRETE SEMIRECESSED CASING | L
175mm



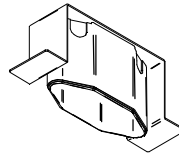
83123

CONTROCASSA INSTALLAZIONE
SEMIRECESSA MURATURA | L 229mm
CONCRETE SEMIRECESSED CASING | L
229mm



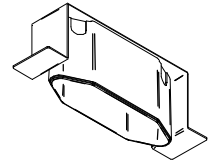
83124

CONTROCASSA INSTALLAZIONE
SEMIRECESSA CONTROSOFFITTO
L 175mm
SEMIRECESSED FALSE CEILING CASING |
L 175mm



83125

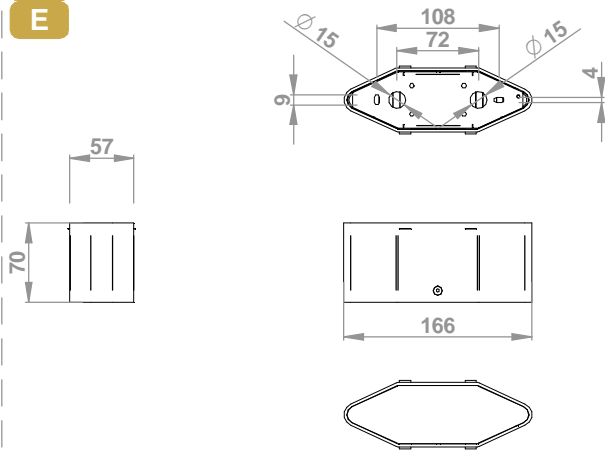
CONTROCASSA INSTALLAZIONE
SEMIRECESSA CONTROSOFFITTO
L 229mm
SEMIRECESSED FALSE CEILING CASING
L 229mm



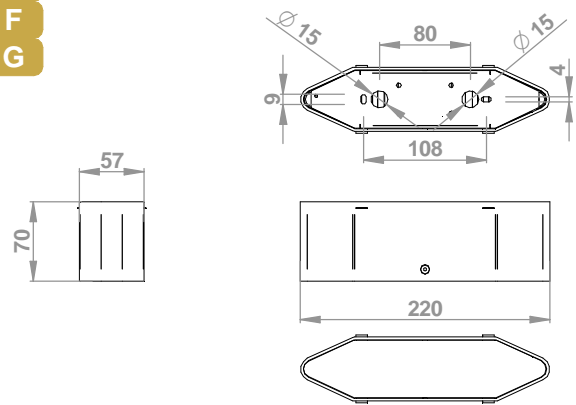
83126

DIMENSIONI / DIMENSIONS

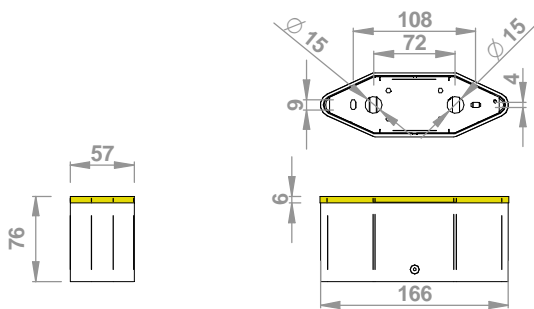
C
E



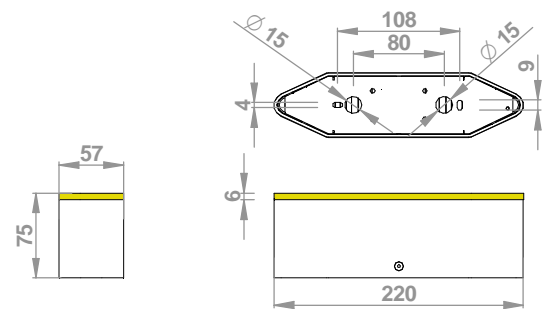
D
F
G



A



B



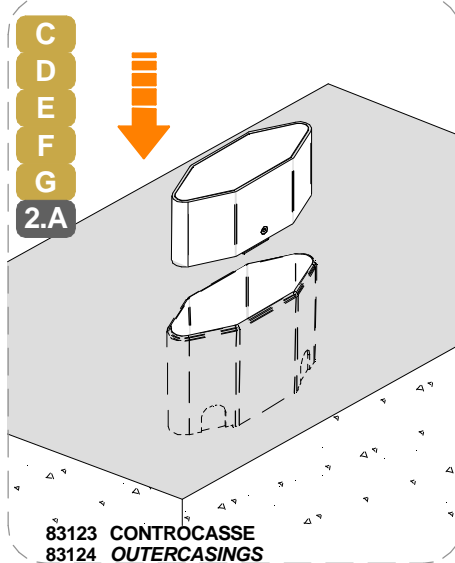
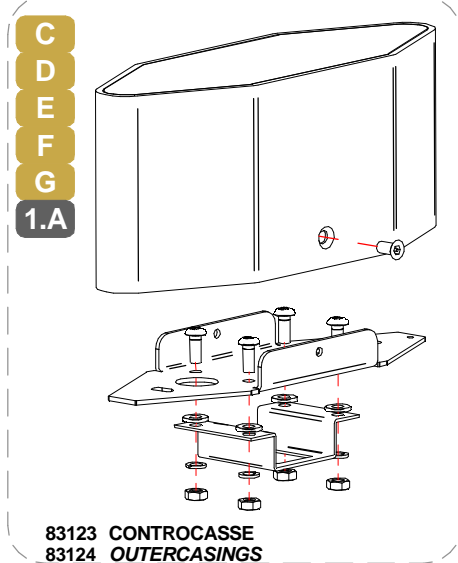
6mm OLTRE LA SUPEFICE
INSTALLATIVA
6mm OVER THE INSTALLATION
SURFACE

SERIE / SERIES: SKIN_S, SKIN_F, SKIN_FL, SKIN_Y

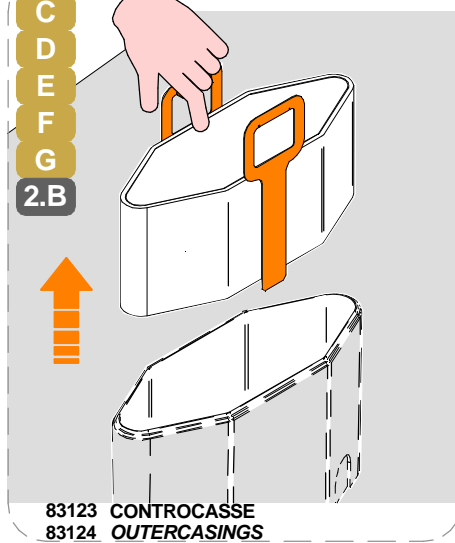
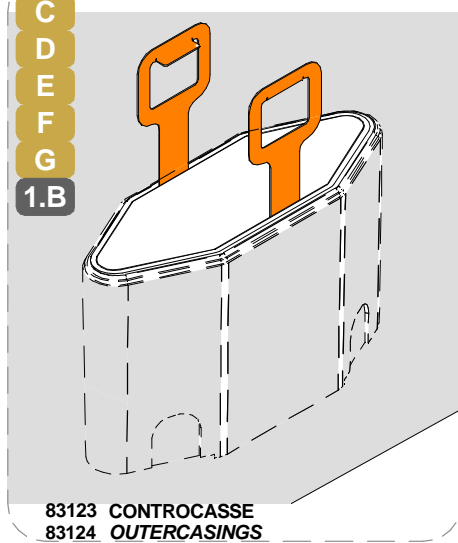
BRAND: i-LèD

IP68 CONNESSIONE IP
IP CONNECTION

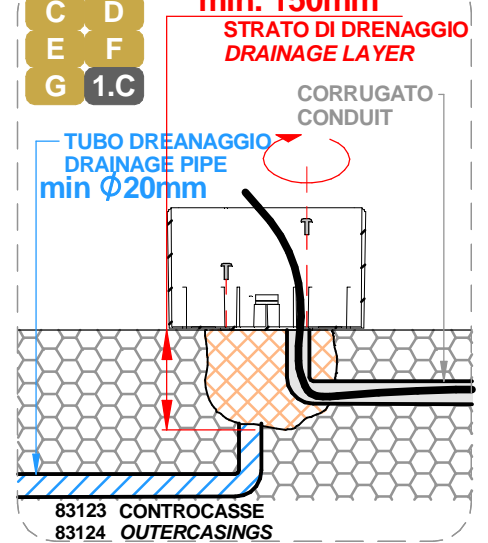
INSTALLAZIONE UPLIGHT A PAVIMENTO AD INCASSO / RECESSED INGROUND UPLIGHT INSTALLATION



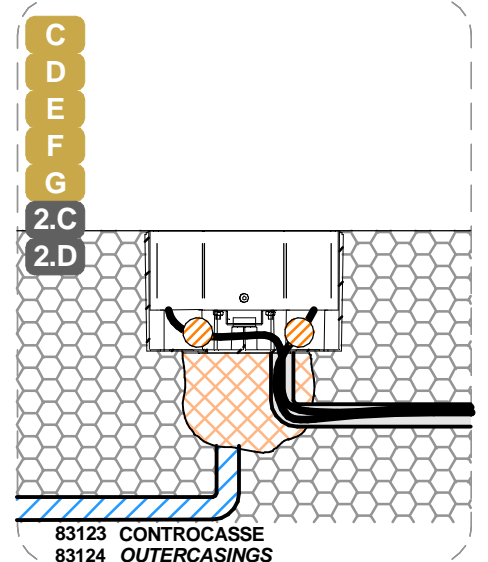
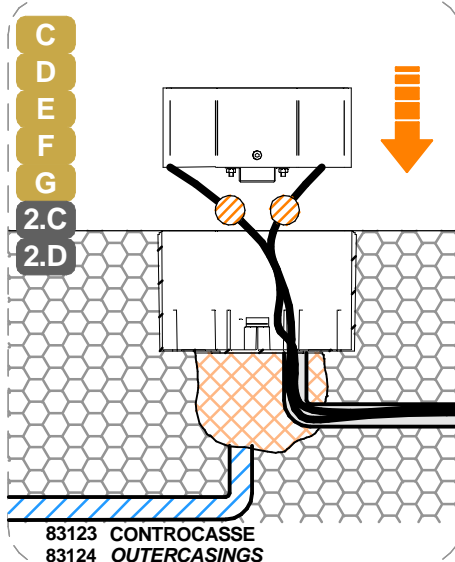
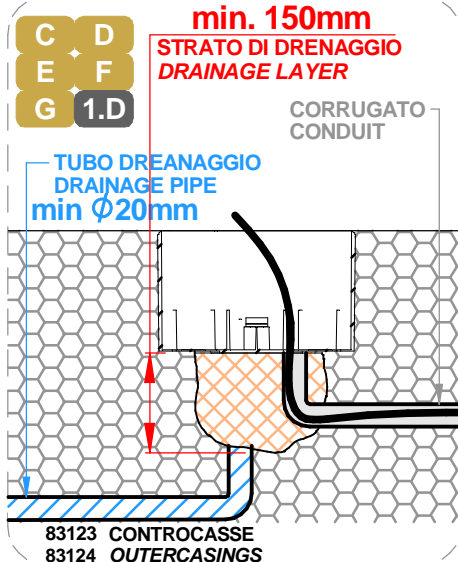
DISINSTALLAZIONE UPLIGHT A PAVIMENTO AD INCASSO / RECESSED INGROUND UPLIGHT UNINSTALLATION



INSTALLAZIONE SUPERFICIE / SURFACE INSTALLATION



INSTALLAZIONE A TERRA / IN GROUND INSTALLATION



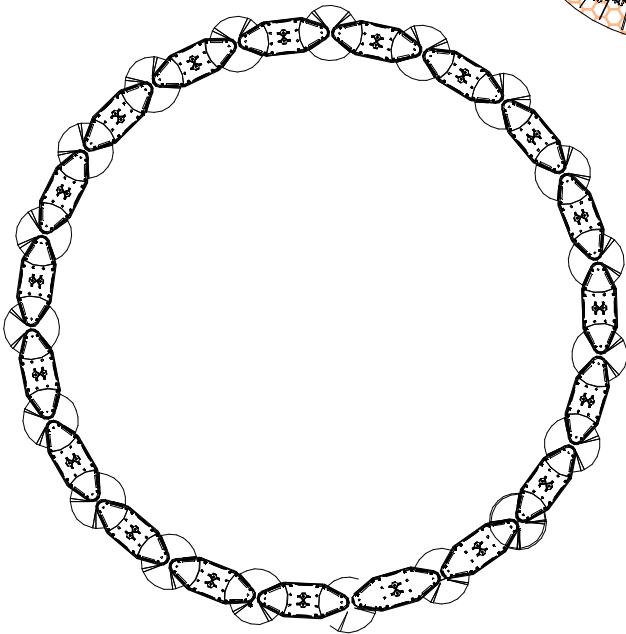
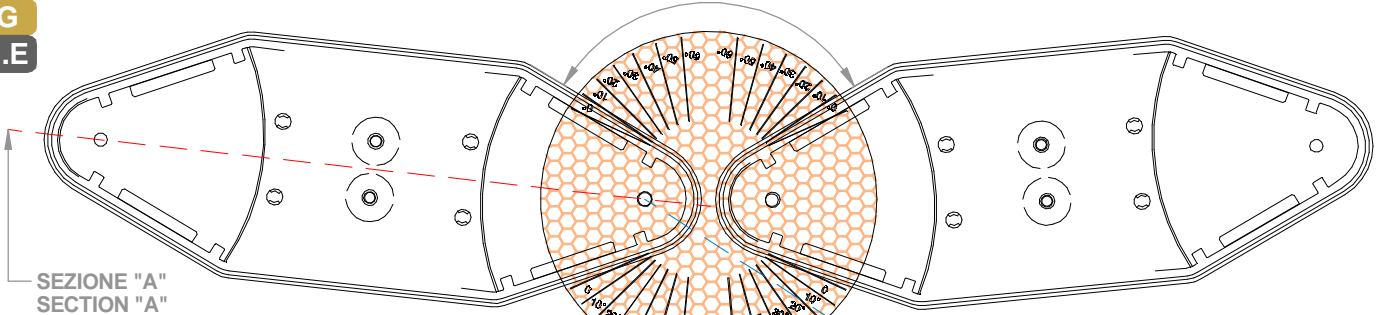
SERIE / SERIES: SKIN_S, SKIN_F, SKIN_FL, SKIN_Y

BRAND: i-LèD

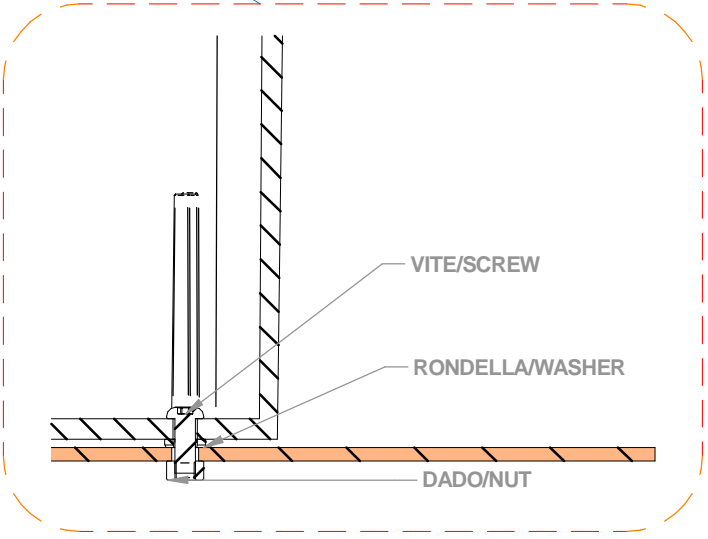
INSTALLAZIONE UPLIGHT A PAVIMENTO AD INCASSO, CONFIGURAZIONE ADATTIVA / RECESSED INGROUND UPLIGHT, ADAPTIVE INSTALLATION

C
D
E
F
G
1.E

ANGOLO DI ROTAZIONE 10° - 60°
ROTATION RANGE 10° - 60°

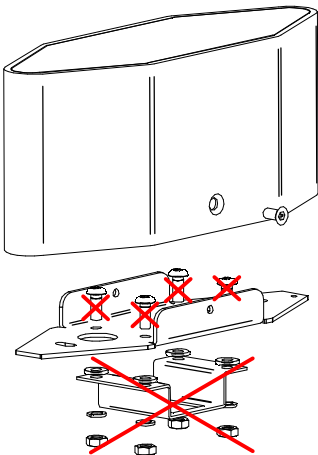


SEZIONE "A"
SECTION "A"

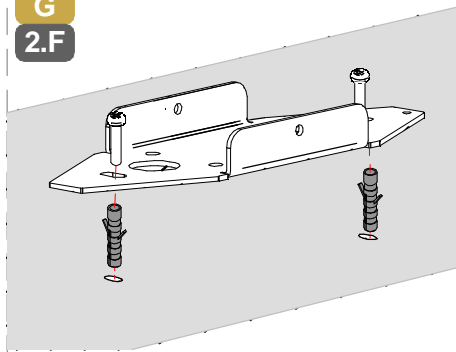


83123 CONTROCASSE
83124 OUTERCASINGS

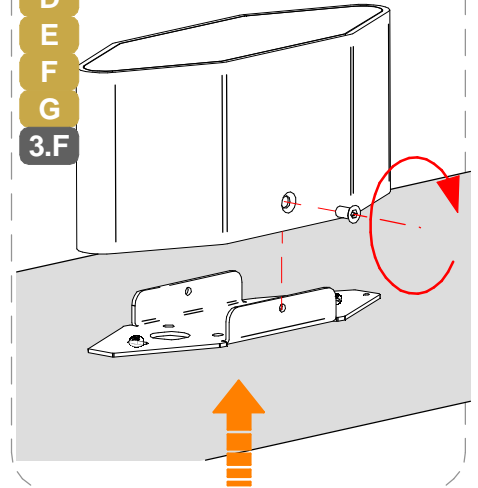
C
D
E
F
G
1.F



C
D
E
F
G
2.F



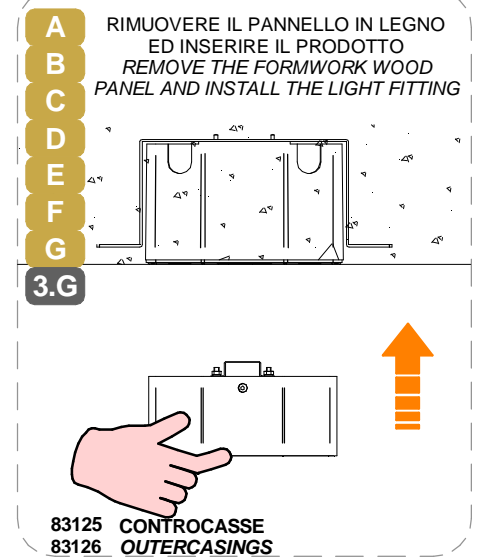
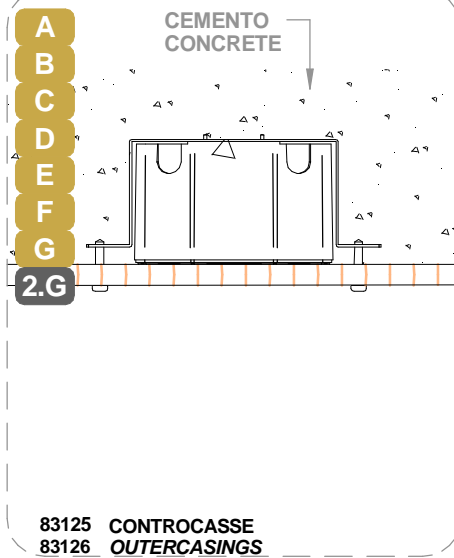
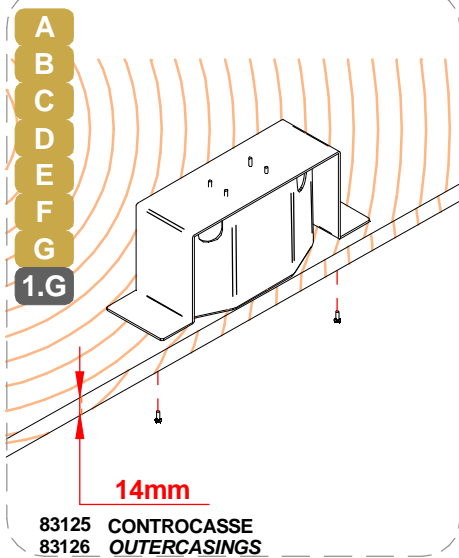
C
D
E
F
G
3.F



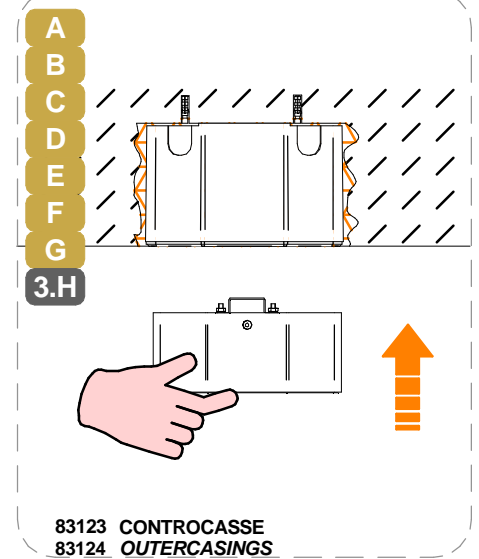
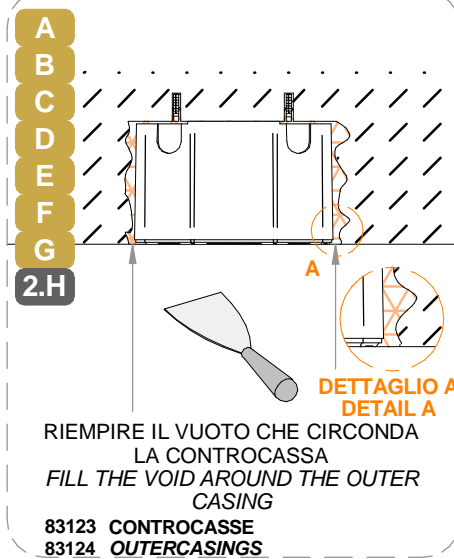
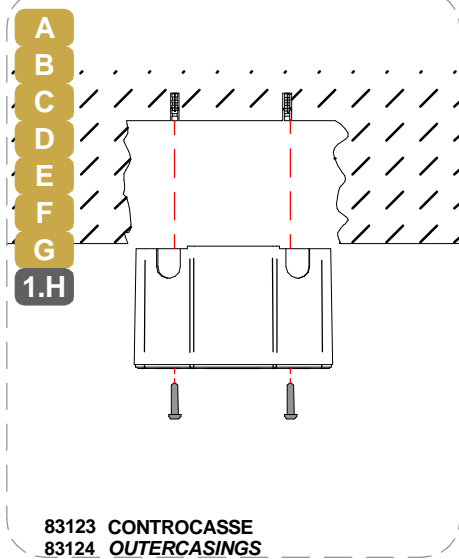
SERIE / SERIES: SKIN_S, SKIN_F, SKIN_FL, SKIN_Y

BRAND: i-LèD

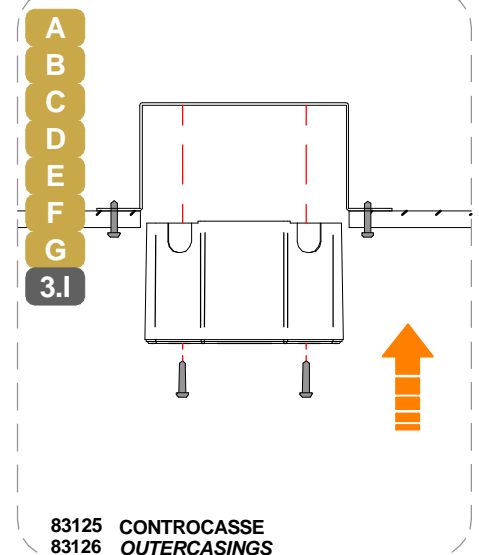
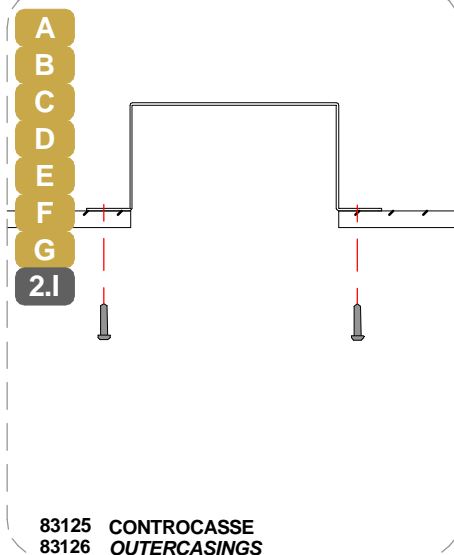
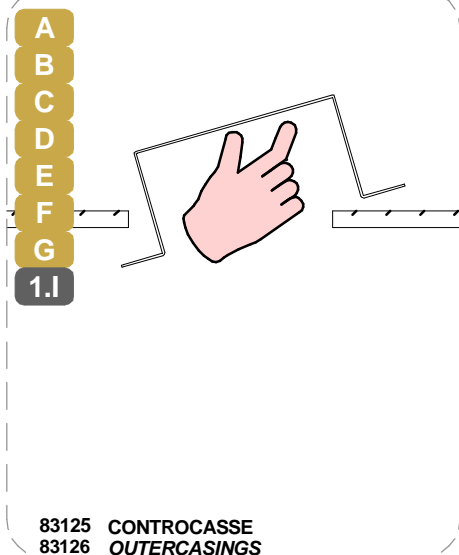
INSTALLAZIONE RECESSA SU SOFFITTO IN INERTE / RECESSED INSTALL CONCRETE CEILING



INSTALLAZIONE RECESSA SU SOFFITTO IN INERTE ESISTENTE / RECESSED INSTALL EXISTING CONCRETE CEILING

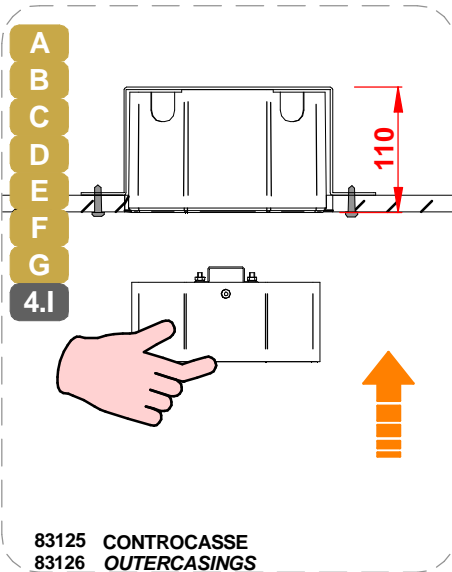


INSTALLAZIONE RECESSA SU CONTROSOFFITTO / RECESSED INSTALL FALSE CEILING



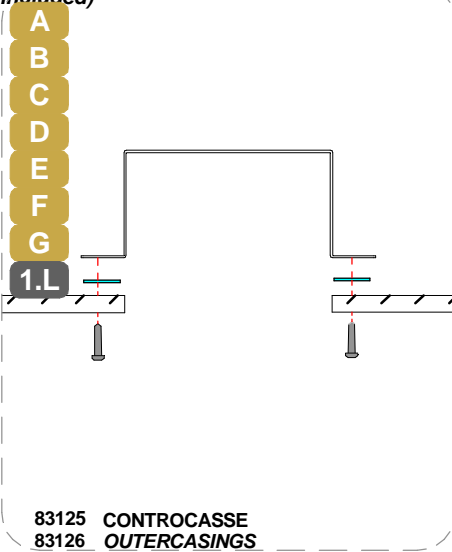
SERIE / SERIES: SKIN_S, SKIN_F, SKIN_FL, SKIN_Y

BRAND: i-LèD

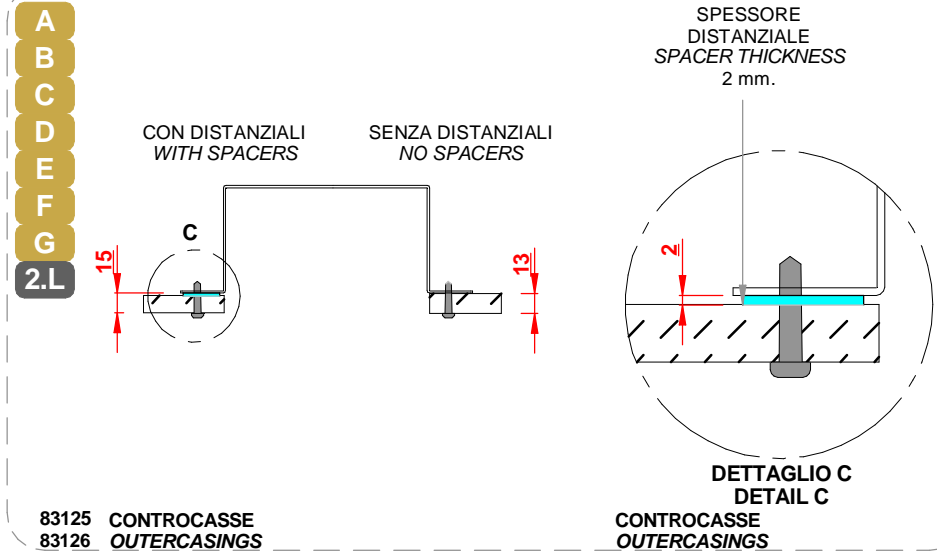


83125 CONTROCASSE
83126 OUTERCASINGS

INSTALLAZIONE RECESSA SU CONTROSOFFITTO CON SPESSORI / RECESSED INSTALL FALSE CEILING WITH SPACERS (2pz inclusi / 2pcs included)



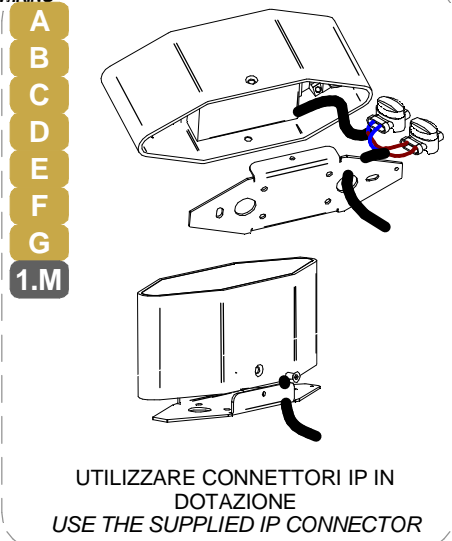
83125 CONTROCASSE
83126 OUTERCASINGS



83125 CONTROCASSE
83126 OUTERCASINGS

DETTAGLIO C
DETAIL C
CONTROCASSE
OUTERCASINGS

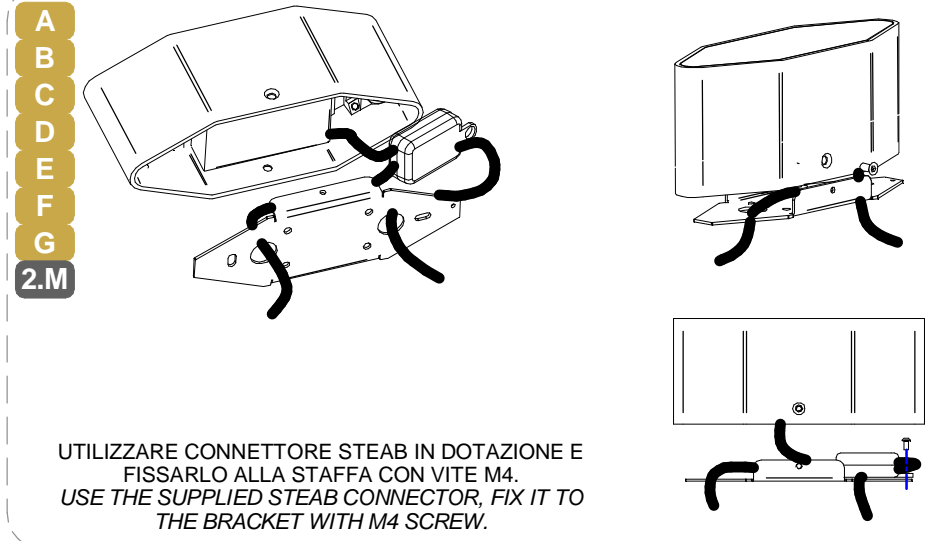
CABLAGGIO INGRESSO SINGOLO | SINGLE POWER IN CABLE WIRING



1.M

UTILIZZARE CONNETTORI IP IN DOTAZIONE
USE THE SUPPLIED IP CONNECTOR

CABLAGGIO CON INGRESSO E USCITA | IN & OUT WIRING



2.M

UTILIZZARE CONNETTORE STEAB IN DOTAZIONE E FISSARLO ALLA STAFFA CON VITE M4.
USE THE SUPPLIED STEAB CONNECTOR, FIX IT TO THE BRACKET WITH M4 SCREW.

SERIE / SERIES: SKIN_S, SKIN_F, SKIN_FL, SKIN_Y

BRAND: i-LèD

MARRONE / BROWN = LINEA / LINE

AZZURRO / LIGHT BLUE = NEUTRO / NEUTRAL

GIALLO-VERDE / YELLOW-GREEN = TERRA / EARTH CPC | PE

CABLAGGIO / WIRING

1

TUTTE LE OPERAZIONI DI COLLEGAMENTO ALLA RETE ELETTRICA DEVONO ESSERE CONDOTTE IN MANCANZA DI TENSIONE
ALL THE WIRING OPERATION MUST BE PERFORMED WITH MCB IN OFF POSITION

2

SE IL PRODOTTO E' DEFINITO IN CLASSE 1, IL CONDUTTORE DI MESSA A TERRA DI PROTEZIONE DEVE ESSERE SEMPRE COLLEGATO
IF THE FITTING IS CLASS 1 RATED, THE CPC | EARTH | PE CONDUCTOR MUST BE CONNECTED

3

SE L'IMPIANTO E' STATO COMPLETATO ED E' IN SICUREZZA, PUO' ESSERE ALIMENTATO
WHEN THE CIRCUIT IS COMPLETED AND SAFE, MCB CAN BE SET IN ON POSITION

ASSICURARSI CHE LA CONTROCASSA OD IL PRODOTTO SIANO POSIZIONATI SU UNA SUPERFICIE PIANA
MAKE SURE THE OUTER CASING OR THE LIGHT FITTING ARE PLACED ON A FLAT SURFACE

!

Per ridurre il rischio di strangolamento, il cavo flessibile collegato all'apparecchio deve essere efficacemente fissato alla parete, se si trova all'interno del volume di accessibilità.
To reduce the risk of strangulation, the flexible cable connected to the device must be securely fixed to the wall if it is located within the accessible area.

MCB N° DI PRODOTTI PER MAGNETOTERMICO N° MAX DEVICES

N° OF LIGHT FITTINGS PER MCB

CODICE CODE	B10	B16	B20	C10	C16	C20
83859	42	68	85	70	113	141
83860	42	68	85	70	113	141
83861	32	50	64	53	86	108
83862	32	50	64	53	86	108
83863	32	50	64	53	86	108
83864	42	68	85	70	113	141
83865	42	68	85	70	113	141
83866	32	50	64	53	86	108
83867	32	50	64	53	86	108
83868	32	50	64	53	86	108
83869	42	68	85	70	113	141
83870	42	68	85	70	113	141
83871	42	68	85	70	113	141
83872	42	68	85	70	113	141
83873	32	50	64	53	86	108

TIPO DI CONNESSIONE TYPE OF CONNECTION

X: Se il cavo flessibile esterno di questo apparecchio è danneggiato, deve essere sostituito da un cavo speciale, disponibile esclusivamente presso il fabbricante, o il suo servizio di assistenza.

X: If the external flexible cable of this appliance is damaged, it must be replaced with a special cable, which is only available from the manufacturer or its service department.

Y: Se il cavo flessibile esterno di questo apparecchio è danneggiato, deve essere sostituito esclusivamente dal fabbricante, dal suo servizio di assistenza o da personale qualificato equivalente, al fine di evitare pericoli.

Y: If the external flexible cable of this appliance is damaged, it must only be replaced by the manufacturer, its service department or equivalent qualified personell in order to avoid danger.

Z: Il cavo flessibile esterno di questo apparecchio non può essere sostituito; se il cavo è danneggiato l'apparecchio deve essere distrutto.

Z: The external flexible cable fo this appliance cannot be replaced; if the cable is damaged, the appliance must be destroyed.

!

SI PREGA SEGUIRE LE BUONE PRATICHE DI DIMENSIONAMENTO E SEZIONAMENTO DELL'IMPIANTO ELETTRICO, TENENDO PRESENTE: LE CARATTERISTICHE DELL'INTERRUTTORE DIFFERENZIALE ED IL NUMERO DI ARTICOLI COLLEGATI ALLA LINEA ELETTRICA; QUESTO PER AGEVOLARE L'IDENFICAZIONE DI EVENTUALI ANOMALIE SULLA LINEA ELETTRICA

PLEASE FOLLOW THE BEST PRACTICES IN ELECTRICAL SYSTEM DESIGN, PAING ATTENTION TO THE RCCB SWITCH CHARACTERISTICS AND THE NUMBER OF FITTINGS CONNECTED TO THE ELETRICAL LINE; THIS HELPS TO INDETIFY POSSIBLE ANOMALIES ON THE ELETRICAL LINE

SERIE / SERIES: SKIN_S, SKIN_F, SKIN_FL, SKIN_Y

BRAND: i-LED

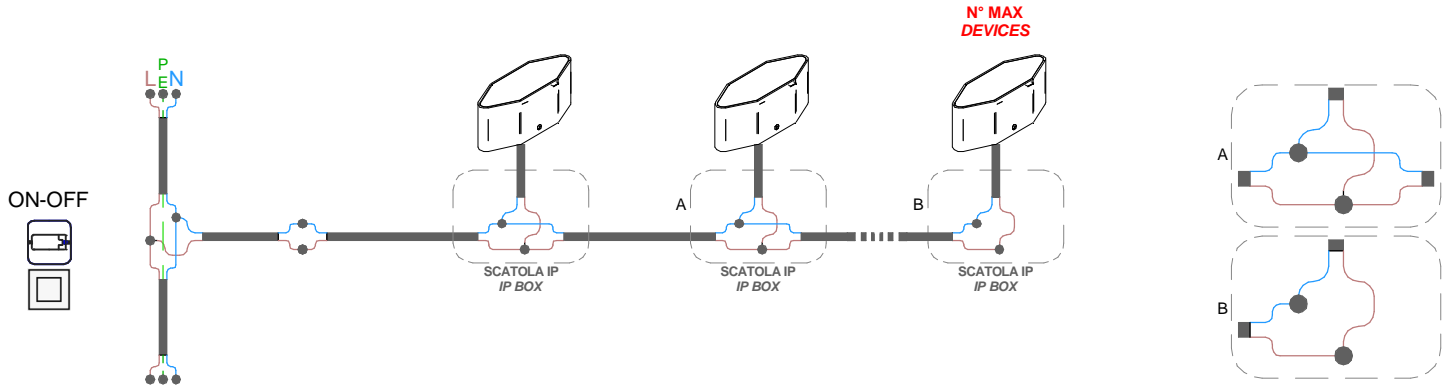
MARRONE / BROWN = LINEA / LINE

AZZURRO / LIGHT BLUE = NEUTRO / NEUTRAL

GIALLO-VERDE / YELLOW-GREEN = TERRA / EARTH CPC | PE

CABLAGGIO IN PARALLELO | PARALLEL WIRING
TENSIONE DI RETE | MAINS VOLTAGE

AC



CABLAGGIO IN PARALLELO | PARALLEL WIRING
TENSIONE DI RETE | MAINS VOLTAGE

AC

