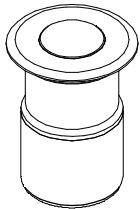
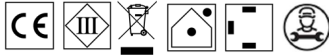
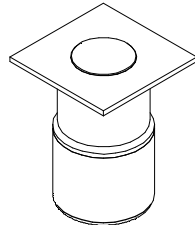
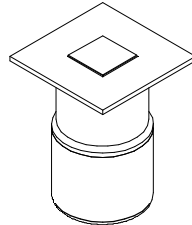
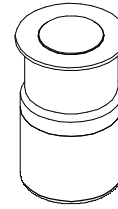
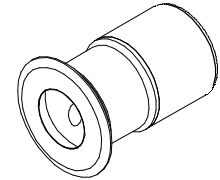
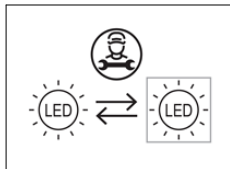


SERIE / SERIES: SUELO_R, QUARA_R, BERET_2R, BERET_2Q
BRAND: i-L^{ED}

**BERET_2R
C01052**
A

**BERET_2Q
C01054**
B

**BERET_2Q
C01053**
C

**SUELO_R
C01049**
D

**QUARA_R
84077
84076
84075**
E

CODICI / CODES

CODE	Dimensions [mm]	Power [W]	Voltage [V]	2W Current [mA]	3W Current [mA]	Weight [Kg]	Static Load [Kg]	Safety Class	IP	CRI	Color Temp. [°K]	Energy Class	N° Light Source	Type of Conn.
C01054	45.5x35x35	2-3	3	630	1000	0.180	500	3	67	80	2700	E	1	Y
C01054	45.5x35x35	2-3	3	630	1000	0.180	500	3	67	80	4000	E	1	Y
C01054	45.5x35x35	2-3	3	630	1000	0.180	500	3	67	80	3000	E	1	Y
C01053	45.5x35x35	2-3	3	630	1000	0.180	500	3	67	80	2700	E	1	Y
C01053	45.5x35x35	2-3	3	630	1000	0.180	500	3	67	80	4000	E	1	Y
C01053	45.5x35x35	2-3	3	630	1000	0.180	500	3	67	80	3000	E	1	Y
C01052	45.5x35x35	2-3	3	630	1000	0.174	500	3	67	80	2700	E	1	Y
C01052	45.5x35x35	2-3	3	630	1000	0.174	500	3	67	80	4000	E	1	Y
C01052	45.5x35x35	2-3	3	630	1000	0.174	500	3	67	80	3000	E	1	Y
84077	45.5x35x35	1.5	24	CV	CV	0.174	-	3	66	90	2700	E	1	Y
84077	45.5x35x35	1.5	24	CV	CV	0.174	-	3	66	90	4000	E	1	Y
84077	45.5x35x35	1.5	24	CV	CV	0.174	-	3	66	90	3000	E	1	Y
84076	45.5x35x35	1.5	24	CV	CV	0.174	-	3	66	90	2700	E	1	Y
84076	45.5x35x35	1.5	24	CV	CV	0.174	-	3	66	90	4000	E	1	Y
84076	45.5x35x35	1.5	24	CV	CV	0.174	-	3	66	90	3000	E	1	Y
84075	45.5x35x35	1.5	24	CV	CV	0.174	-	3	66	90	2700	E	1	Y
84075	45.5x35x35	1.5	24	CV	CV	0.174	-	3	66	90	4000	E	1	Y
84075	45.5x35x35	1.5	24	CV	CV	0.174	-	3	66	90	3000	E	1	Y
C01049	46x30x30	2-3	3	630	1000	0.140	500	3	68	80	2700	E	1	Y
C01049	46x30x30	2-3	3	630	1000	0.140	500	3	68	80	4000	E	1	Y
C01049	46x30x30	2-3	3	630	1000	0.140	500	3	68	80	3000	E	1	Y

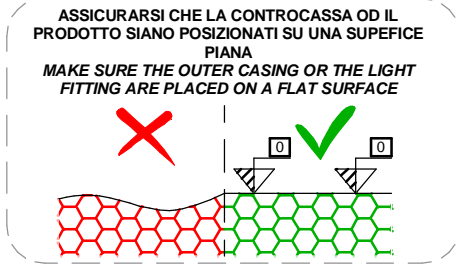
Ta *L'insieme faretto + controcassa una volta installati garantisce la resistenza al carico statico pari a quanto riportato in tabella.
 -20°C ÷ 50°C *Once installed, the spotlight + housing assembly guarantees static load resistance equal to the values given in the table.

SERIE / SERIES: SUELO_R, QUARA_R, BERET_2R, BERET_2Q

BRAND: i-L^èD

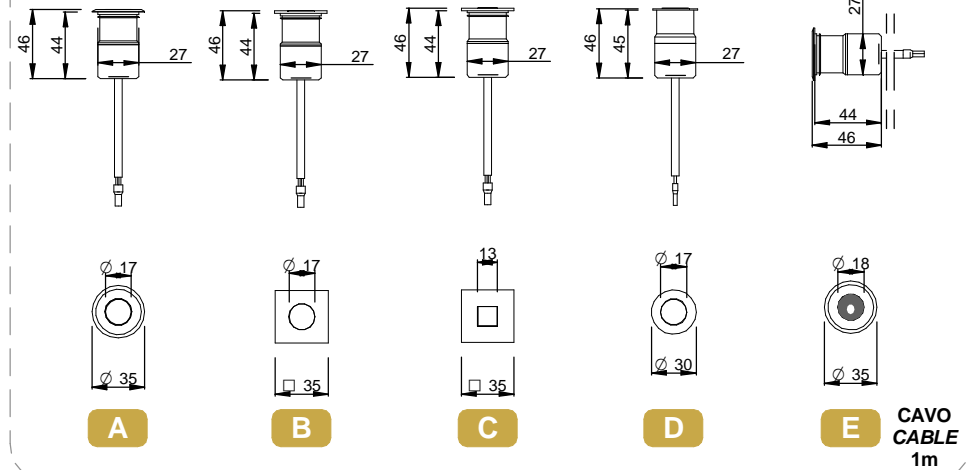
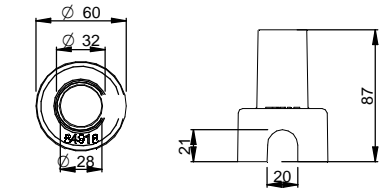
IP68 CONNESSIONE IP
IP CONNECTION

DIMENSIONI / DIMENSIONS

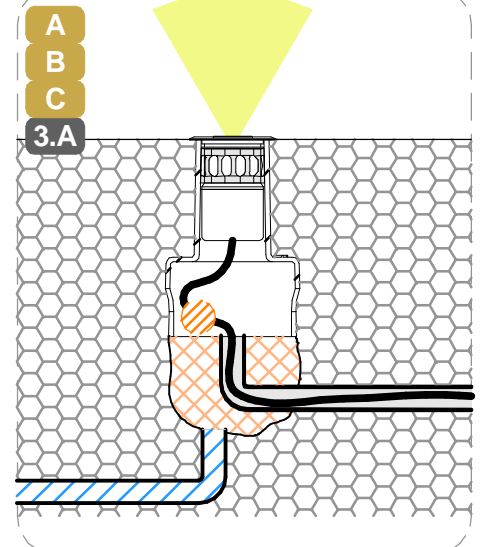
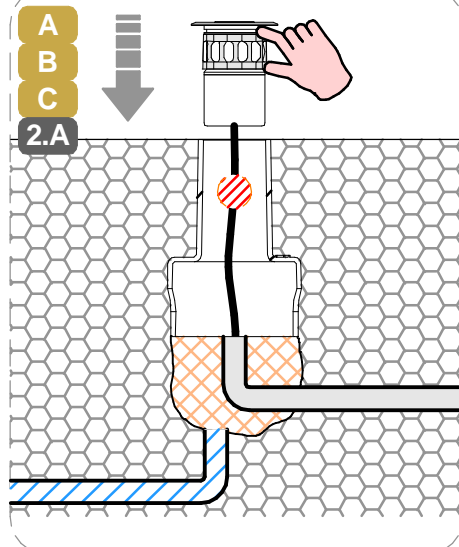
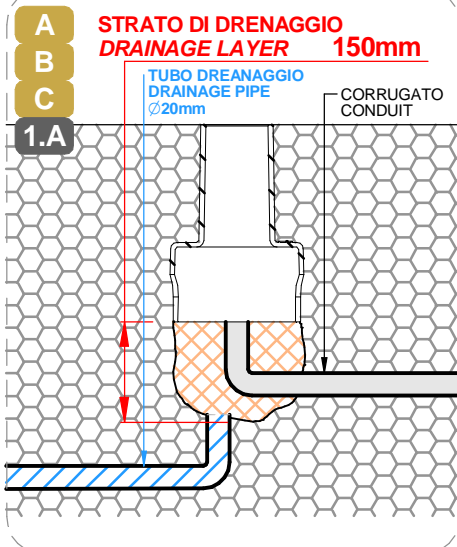


ACCESSORI NON INCLUSI / ACCESSORIES NOT INCLUDED

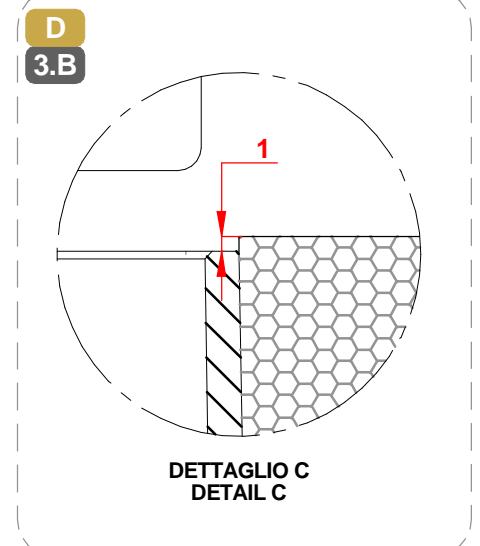
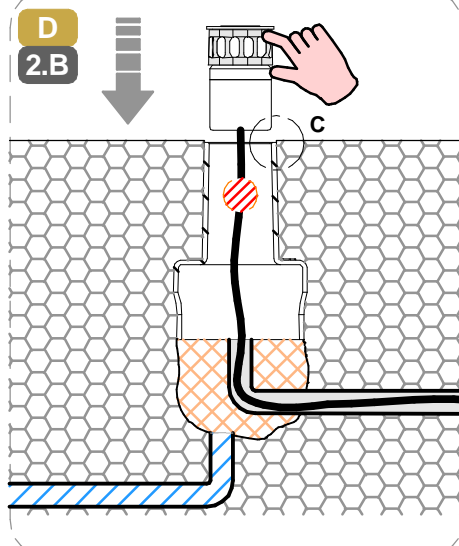
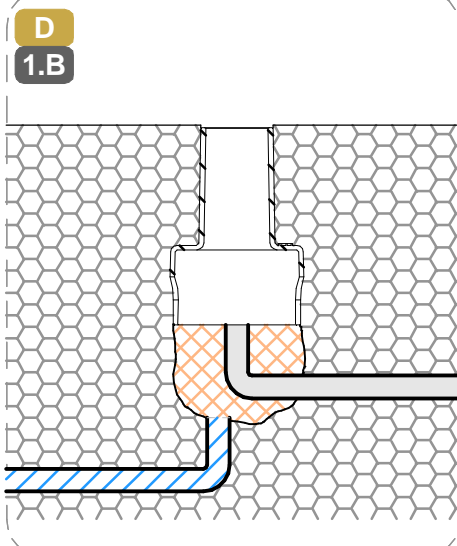
CONTROCASSA / OUTER CASING



INSTALLAZIONE UPLIGHT A PAVIMENTO AD INCASSO / RECESSED INGROUND UPLIGHT INSTALLATION



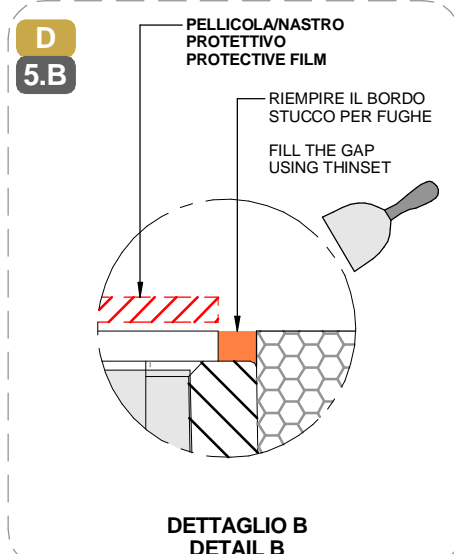
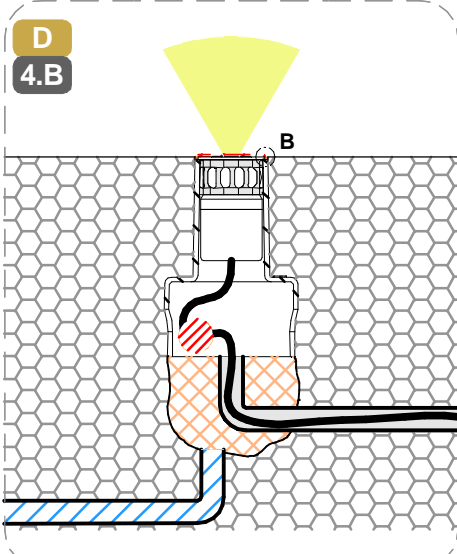
INSTALLAZIONE UPLIGHT A PAVIMENTO AD INCASSO / RECESSED INGROUND UPLIGHT INSTALLATION



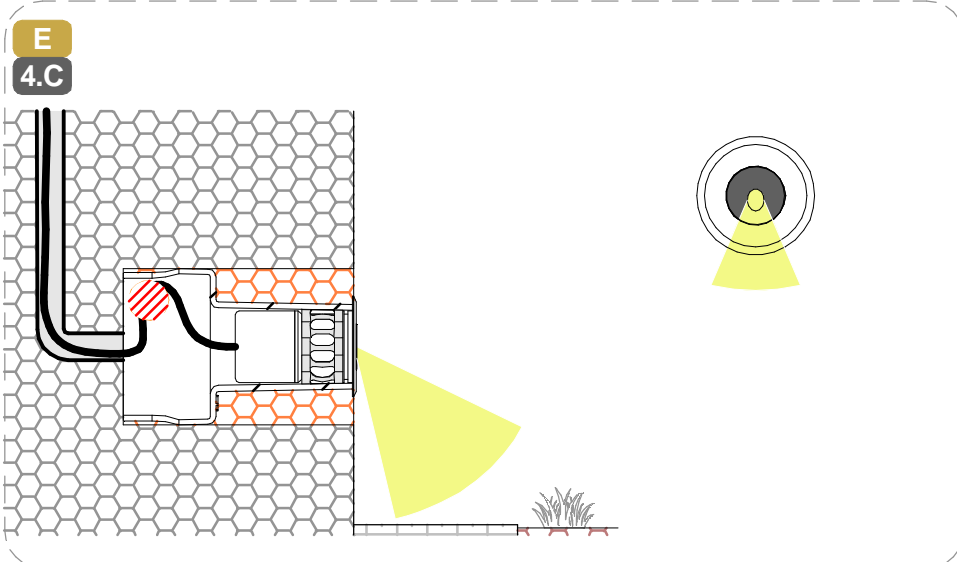
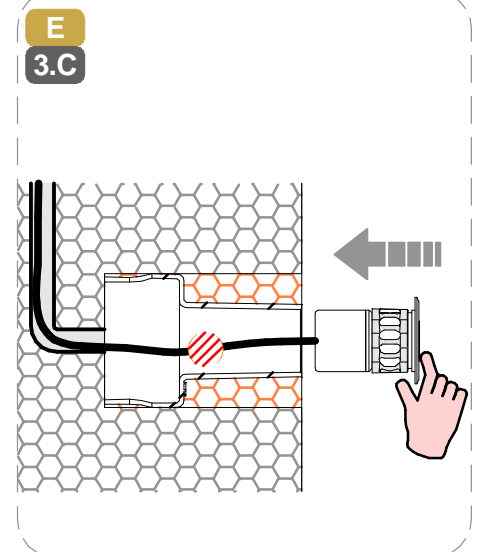
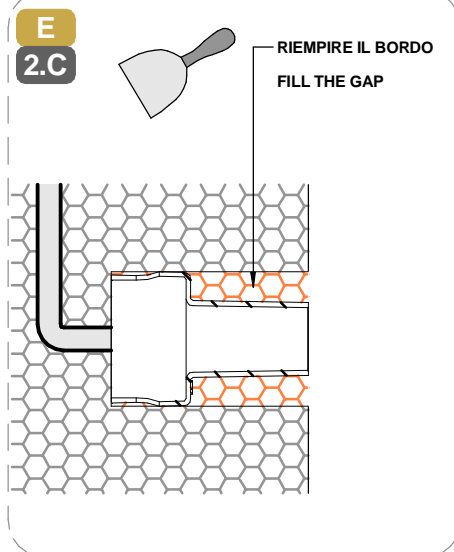
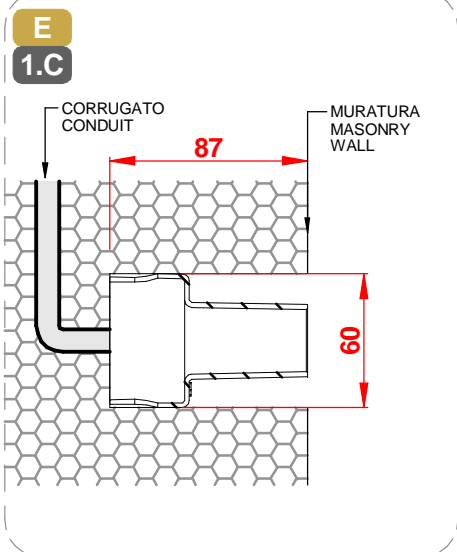
SERIE / SERIES: SUELO_R, QUARA_R, BERET_2R, BERET_2Q

BRAND: i-L^èD

IP68 CONNESSIONE IP
IP CONNECTION



INSTALLAZIONE A PARETE AD INCASSO / RECESSED WALL INSTALLATION



SERIE / SERIES: SUELO_R, QUARA_R, BERET_2R, BERET_2Q

BRAND: i-LèD

MARRONE / BROWN = LINEA / LINE

AZZURRO / LIGHT BLUE = NEUTRO / NEUTRAL

GIALLO-VERDE / YELLOW-GREEN = TERRA / EARTH CPC | PE

CABLAGGIO / WIRING

1

TUTTE LE OPERAZIONI DI COLLEGAMENTO ALLA RETE ELETTRICA DEVONO ESSERE CONDOTTE IN MANCANZA DI TENSIONE
ALL THE WIRING OPERATION MUST BE PERFORMED WITH MCB IN OFF POSITION

2

SE IL PRODOTTO E' DEFINITO IN CLASSE 1, IL CONDUTTORE DI MESSA A TERRA DI PROTEZIONE DEVE ESSERE SEMPRE COLLEGATO
IF THE FITTING IS CLASS 1 RATED, THE CPC | EARTH | PE CONDUCTOR MUST BE CONNECTED

3

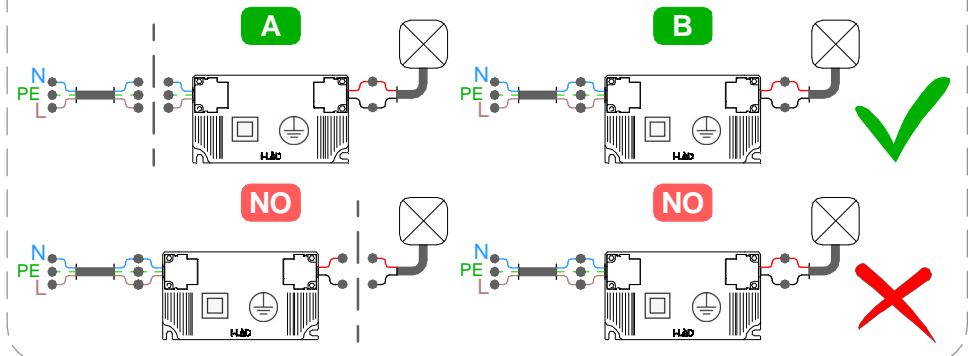
SE L'IMPIANTO E' STATO COMPLETATO ED E' IN SICUREZZA, PUO' ESSERE ALIMENTATO
WHEN THE CIRCUIT IS COMPLETED AND SAFE, MCB CAN BE SET IN ON POSITION



SE IL PRODOTTO E' DEFINITO IN CLASSE 3, IL CIRCUITO SECONDARIO A BASSA TENSIONE DEVE ESSERE COLLEGATO ALL'ALIMENTATORE PRIMA CHE QUESTO SIA SOTTO TENSIONE

IF THE FITTING IS CLASS 3 RATED, THE LOW VOLTAGE CIRCUIT MUST BE WIRED BEFORE THE POWER SUPPLY IS POWERED ON

SE IL CARICO VENISSE COLLEGATO AD ALIMENTATORE SOTTO TENSIONE, I PRODOTTI POTREBBERO DANNEGGIARSI, SUBENDO UN DANNO DA SOVRATENSIONE
IF THE LOAD IS WIRED TO AN ALREADY ON POWER SUPPLY, THE FITTINGS COULD BE DAMAGED BY VOLTAGE SURGE



TIPO DI CONNESSIONE TYPE OF CONNECTION

X: Se il cavo flessibile esterno di questo apparecchio è danneggiato, deve essere sostituito da un cavo speciale, disponibile esclusivamente presso il fabbricante, o il suo servizio di assistenza.
X: If the external flexible cable of this appliance is damaged, it must be replaced with a special cable, which is only available from the manufacturer or its service department.

Y: Se il cavo flessibile esterno di questo apparecchio è danneggiato, deve essere sostituito esclusivamente dal fabbricante, dal suo servizio di assistenza o da personale qualificato equivalente, al fine di evitare pericoli.
Y: If the external flexible cable of this appliance is damaged, it must only be replaced by the manufacturer, its service department or equivalent qualified personell in order to avoid danger.

Z: Il cavo flessibile esterno di questo apparecchio non può essere sostituito; se il cavo è danneggiato l'apparecchio deve essere distrutto.
Z: The external flexible cable fo this appliance cannot be replaced; if the cable is damaged, the appliance must be destroyed.

MCB

N° DI PRODOTTI PER MAGNETOTERMICO N° OF LIGHT FITTINGS PER MCB

CODICE CODE	B10	B16	B20	C10	C16	C20
89420	65	105	131	109	175	219
89488	30	49	61	51	82	102
89179	21	34	42	35	56	70
89359	11	17	21	18	28	36
C-E200008	42	67	85	49	79	98
99186	27	44	55	46	74	92
C-E100046	16	27	33	27	45	56
C-E100033	16	25	31	25	40	50
C-E200011	51	82	102	59	95	119
C-E200002	42	67	85	49	79	98
C-E100047	101	162	202	118	189	237
C-E200012	18	30	37	31	50	62
C-E100034	16	25	31	25	40	50
99331	6	10	12	10	16	20
99786	2	4	4	3	6	7



Per ridurre il rischio di strangolamento, il cavo flessibile collegato all'apparecchio deve essere efficacemente fissato alla parete, se si trova all'interno del volume di accessibilità.
To reduce the risk of strangulation, the flexible cable connected to the device must be securely fixed to the wall if it is located within the accessible area.

N° MAX DEVICES

N° DI PRODOTTI PER ALIMENTATORE N° OF LIGHT FITTINGS PER DRIVER

CODICE CODE	ON OFF						DALI					DALI PUSH	DALI 0/1-10V	DALI/PUSH 0/1-10V	
	89420	89488	89179	89359	C-E200008	99186	C-E100046	C-E100033	C-E200011	C-E200002	C-E100047	C-E200012	C-E100034	99660 + 99331 150W 99786 240W	83042 + 99331 150W 99786 240W
	CC	CV	CV	CV	CC	CC	CC	CC	CC	CC	CC	CC	CC	CV	CV
C01054	1-2				3-6	6-12	1-6	4-12	1-4	5-12	1-3	4-15	4-12		
C01053	1-3				3-7	6-13	1-7	4-13	1-5	5-13	1-4	4-15	4-12		
C01052	1-3				3-7	6-13	1-7	4-13	1-5	5-13	1-4	4-15	4-12		
84077		1-9	1-15	1-30										1-70/1-112	1-70/1-112
84076		1-9	1-15	1-30										1-70/1-112	1-70/1-112
84075		1-9	1-15	1-30										1-70/1-112	1-70/1-112
C01049	1-2				3-6	6-12	1-6	4-12	1-4	5-12	1-3	4-15	4-12		

SERIE / SERIES: SUELO_R, QUARA_R, BERET_2R, BERET_2Q

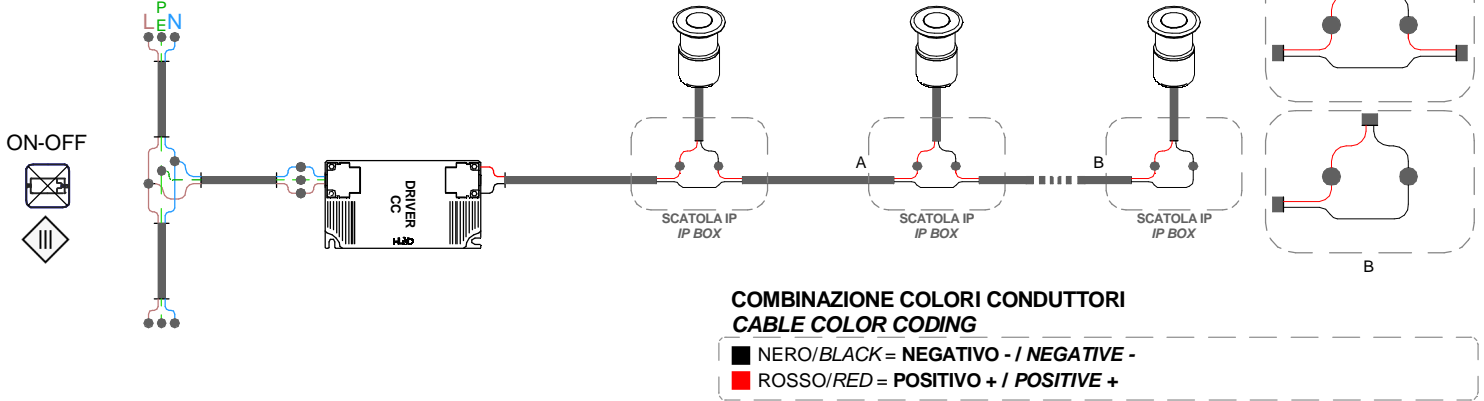
BRAND: i-LED

MARRONE / BROWN = LINEA / LINE

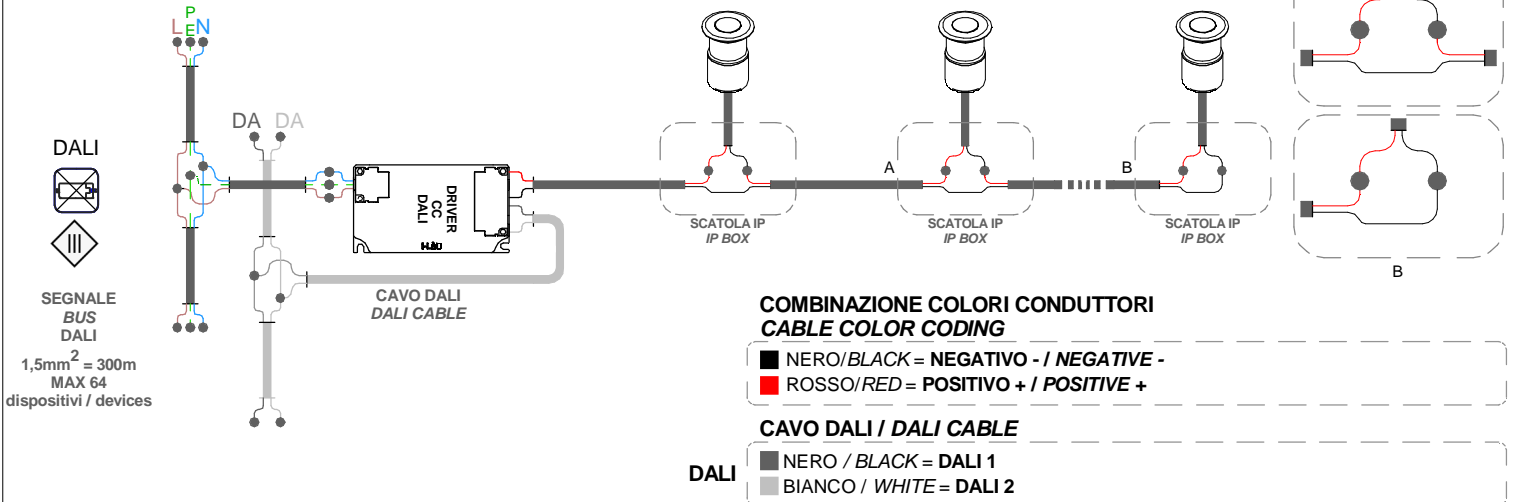
AZZURRO / LIGHT BLUE = NEUTRO / NEUTRAL

GIALLO-VERDE / YELLOW-GREEN = TERRA / EARTH CPC | PE

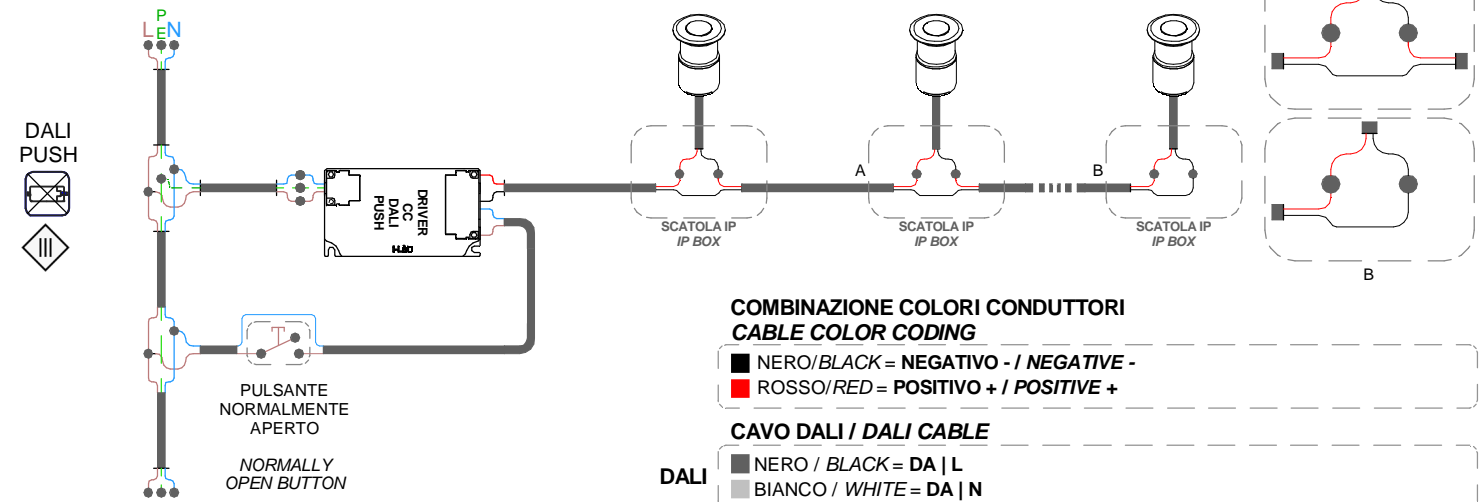
CABLAGGIO IN SERIE | CORRENTE COSTANTE
SERIES WIRING | CONSTANT CURRENT



CABLAGGIO IN SERIE | CORRENTE COSTANTE
SERIES WIRING | CONSTANT CURRENT



CABLAGGIO IN SERIE | CORRENTE COSTANTE
SERIES WIRING | CONSTANT CURRENT



SERIE / SERIES: SUELO_R, QUARA_R, BERET_2R, BERET_2Q

BRAND: i-L^èD

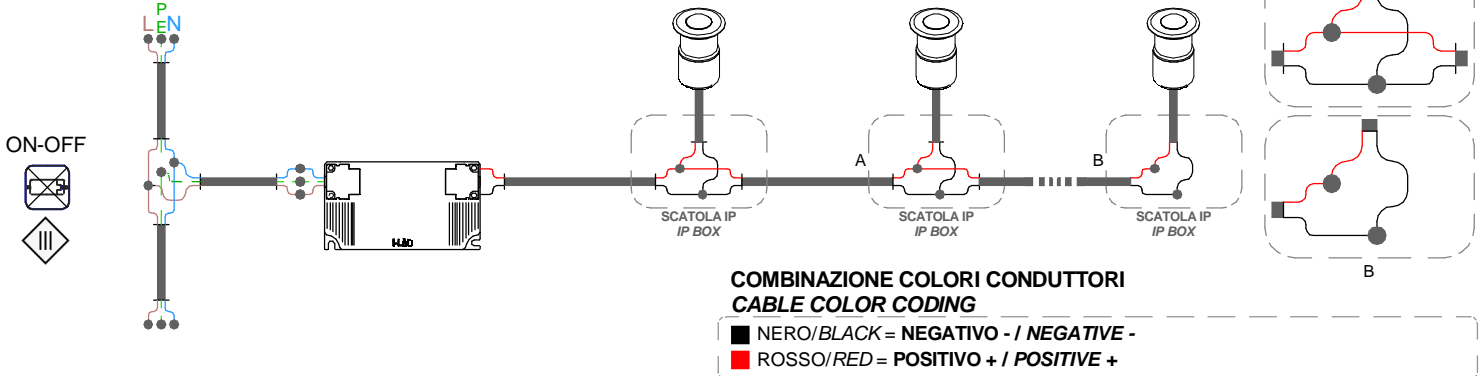
MARRONE / BROWN = LINEA / LINE

AZZURRO / LIGHT BLUE = NEUTRO / NEUTRAL

GIALLO-VERDE / YELLOW-GREEN = TERRA / EARTH CPC | PE

CABLAGGIO IN PARALLELO | TENSIONE COSTANTE
PARALLEL WIRING | CONSTANT VOLTAGE

CV



CABLAGGIO IN PARALLELO | TENSIONE COSTANTE
PARALLEL WIRING | CONSTANT VOLTAGE

CV

