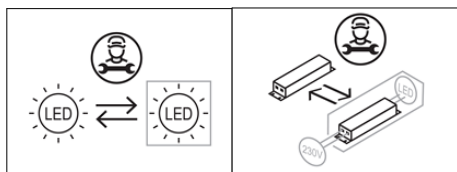
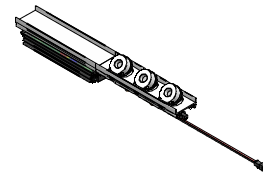
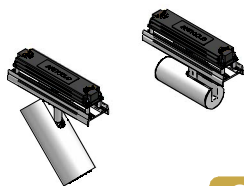


SERIES: ACCESSORI MODUS / MODUS ACCESSORIES
BRAND: i-LèD

**MICROPRISMATICO
MICROPRISMAT**

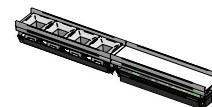
 83722 83746
 83723 83747
 83724 83748

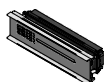
A
OPTUS EX

 83732
 83756

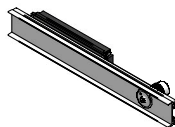
B
**PROIETTORI
PROJECTORS**

 83731
 83755
 83730
 83754

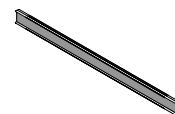
C
CELL_WW

 83721
 83745

D
CELL

 83720
 83744

E
**SENSORE QUALITA' DELL'ARIA
AIR QUALITY SENSOR**

 C-E900004
 C-E900005

F
**SENSORE LUMINOSITA' PRESENZA
PIR LIGHT SENSOR**

 C-E900002
 C-E900001

G
**TAMPONAMENTO
FILL ELEMENT**

 83725 83750
 83749 83727
 83729 83751
 83753 83728
 83726 83752

H
CODICI / CODES

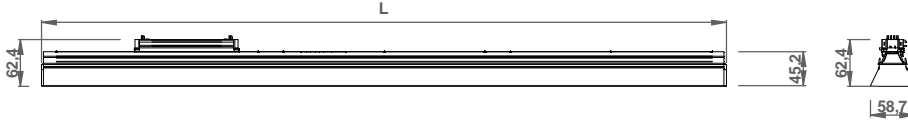
CODICE CODE	TIPO TYPE	Dimensions (LxWxH / Ø x H mm)	POWER (W)	VOLTAGE (V)	CURRENT (mA)	WEIGHT (Kg)	CLASS	IP	CRI	Energy class light source	
										Temperature CCT [°K]	
										3500	4000
83722	MICROPRISMATICO / MICROPRISMATIC	900 x 59 x 66,5	19	24V CV	-	0,8	3	40	90	E	E
83746	MICROPRISMATICO / MICROPRISMATIC	900 x 59 x 66,5	19	24V CV	-	0,8	3	40	90	E	E
83760	MICROPRISMATICO / MICROPRISMATIC	900 x 59 x 66,5	19	24V CV	-	0,8	3	40	90	E	E
83723	MICROPRISMATICO / MICROPRISMATIC	1200 x 59 x 66,5	24	24V CV	-	1	3	40	90	E	E
83747	MICROPRISMATICO / MICROPRISMATIC	1200 x 59 x 66,5	24	24V CV	-	1	3	40	90	E	E
83761	MICROPRISMATICO / MICROPRISMATIC	1200 x 59 x 66,5	24	24V CV	-	1	3	40	90	E	E
83724	MICROPRISMATICO / MICROPRISMATIC	1500 x 59 x 66,5	30	24V CV	-	1,4	3	40	90	E	E
83748	MICROPRISMATICO / MICROPRISMATIC	1500 x 59 x 66,5	30	24V CV	-	1,4	3	40	90	E	E
83762	MICROPRISMATICO / MICROPRISMATIC	1500 x 59 x 66,5	30	24V CV	-	1,4	3	40	90	E	E
83732	OPTUS EX	300 x 38,5 x 60	5	24V CV	-	0,2	3	40	90	E	E
83756	OPTUS EX	300 x 38,5 x 60	5	24V CV	-	0,2	3	40	90	E	E
83731	PROIETTORI / PROJECTORS	150 x 38 x 104	7	24V CV	-	0,25	3	40	90	E	E
83755	PROIETTORI / PROJECTORS	150 x 38 x 104	7	24V CV	-	0,25	3	40	90	E	E
83730	PROIETTORI / PROJECTORS	150 x 38 130	12	24V CV	-	0,3	3	40	90	E	E
83754	PROIETTORI / PROJECTORS	150 x 38 130	12	24V CV	-	0,3	3	40	90	E	E
83721	CELL_WW	300 x 38,5 x 44	12	24V CV	-	0,25	3	40	90	E	E
83745	CELL_WW	300 x 38,5 x 44	12	24V CV	-	0,25	3	40	90	E	E
83720	CELL	300 x 38,5 x 44	12	24V CV	-	0,25	3	40	90	E	E
83744	CELL	300 x 38,5 x 44	12	24V CV	-	0,25	3	40	90	E	E
C-E900004	SENSORE QUALITA' DELL'ARIA / AIR QUALITY SENSOR	150 x 38 x 45	-	24V CV	-	0,1	3	40			
C-E900005	SENSORE QUALITA' DELL'ARIA / AIR QUALITY SENSOR	150 x 38 x 45	-	24V CV	-	0,1	3	40			
C-E900002	SENSORE MOVIMENTO E LUMINOSITA' / PIR LIGHT SENSOR	300 x 38 x 45	-	24V CV	-	0,2	3	40			
C-E900001	SENSORE MOVIMENTO E LUMINOSITA' / PIR LIGHT SENSOR	300 x 38 x 45	-	24V CV	-	0,2	3	40			

SERIES: ACCESSORI MODUS / MODUS ACCESSORIES

BRAND: i-LÈD

DIMENSIONI / DIMENSIONS

83722
83723
83724



CODICE
CODE

L = LUNGHEZZA
L = LENGHT
[mm]

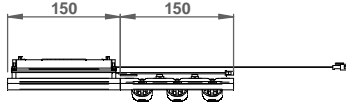
83722	900
83746	
83723	1200
83747	
83724	1500
83748	

83746
83747
83748

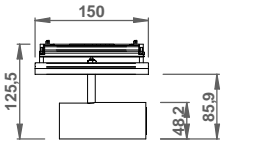
NON E' POSSIBILE INSTALLARE X MODULI MICROPRISMATICI ALL'INTERNO DI X MODULI MASTER + SLAVE DI LUNGHEZZA UGUALE.
FATTA ECCEZIONE PER MODULI LUNGHEZZA 900mm.
IT IS NOT POSSIBLE TO INSTALL X MICROPRISMATIC MODULES INSIDE X MASTER + SLAVE MODULES OF THE SAME LENGTH.
EXCEPT FOR MODULES WITH A LENGTH OF 900 MM.



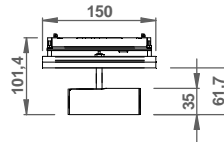
83732
83756



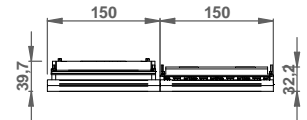
83730
83754



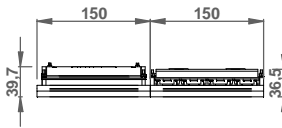
83731
83755



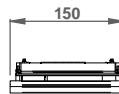
83721
83745



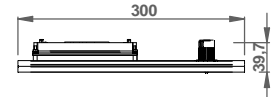
83720
83744



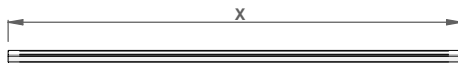
C-E900004
C-E900005



C-E900002
C-E900001



83725 83750
83749 83727
83729 83751
83753 83728
83726 83752



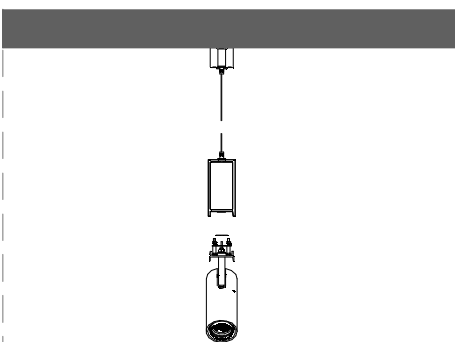
CODICE
CODE

X = LUNGHEZZA
X = LENGHT
[mm]

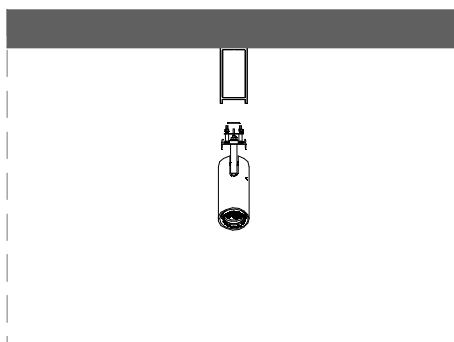
83725, 83749	150
83729, 83753	300
83726, 83750	600
83727, 83751	900
83728, 83752	1200

INSTALLAZIONE / INSTALLATION

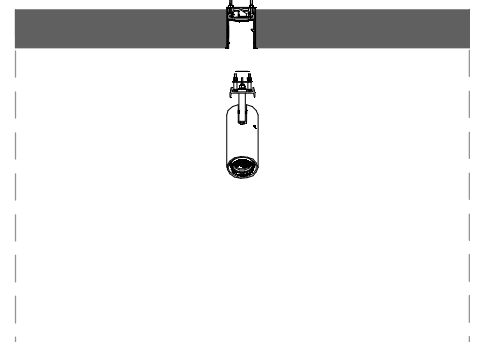
MODUS_MP



MODUS_MS



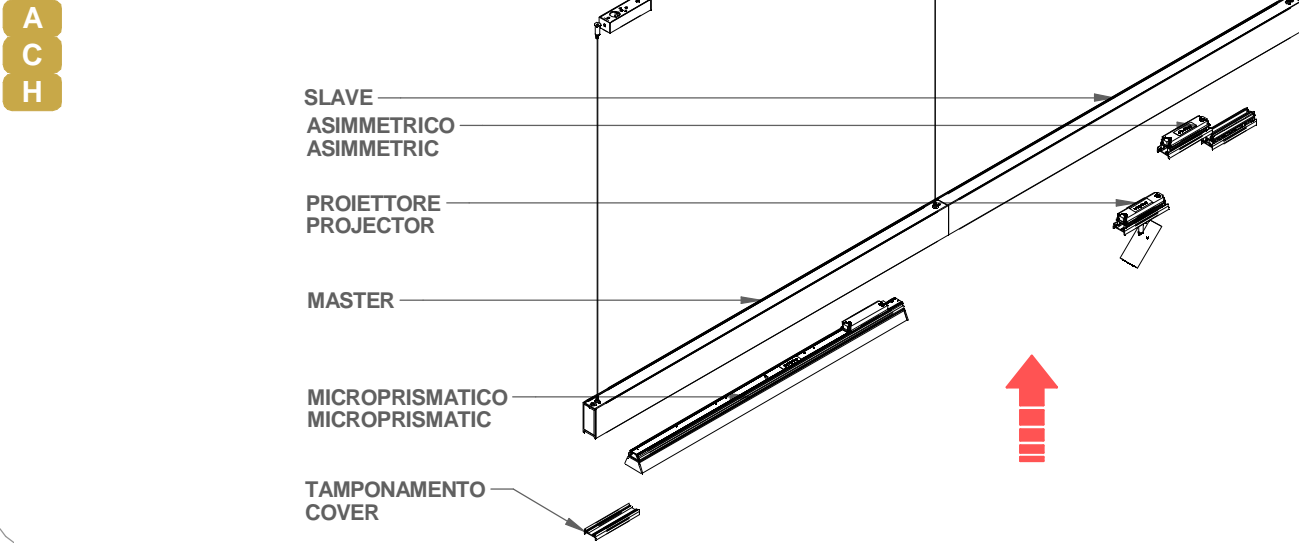
MODUS_MC



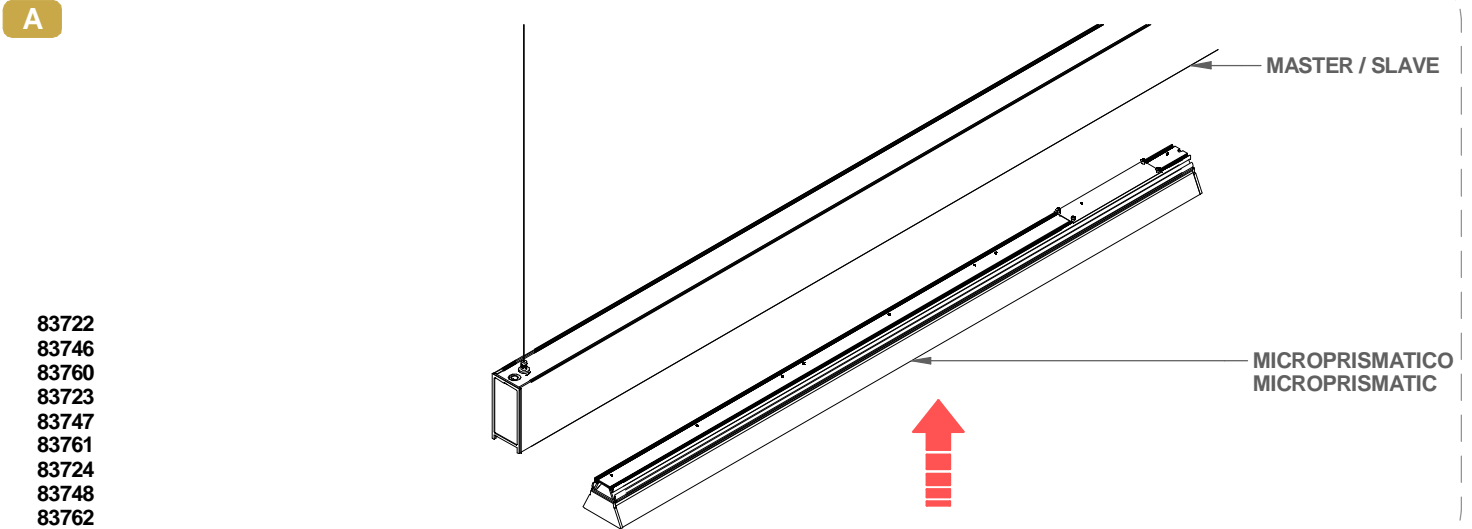
SERIES: ACCESSORI MODUS / MODUS ACCESSORIES

BRAND: i-LED

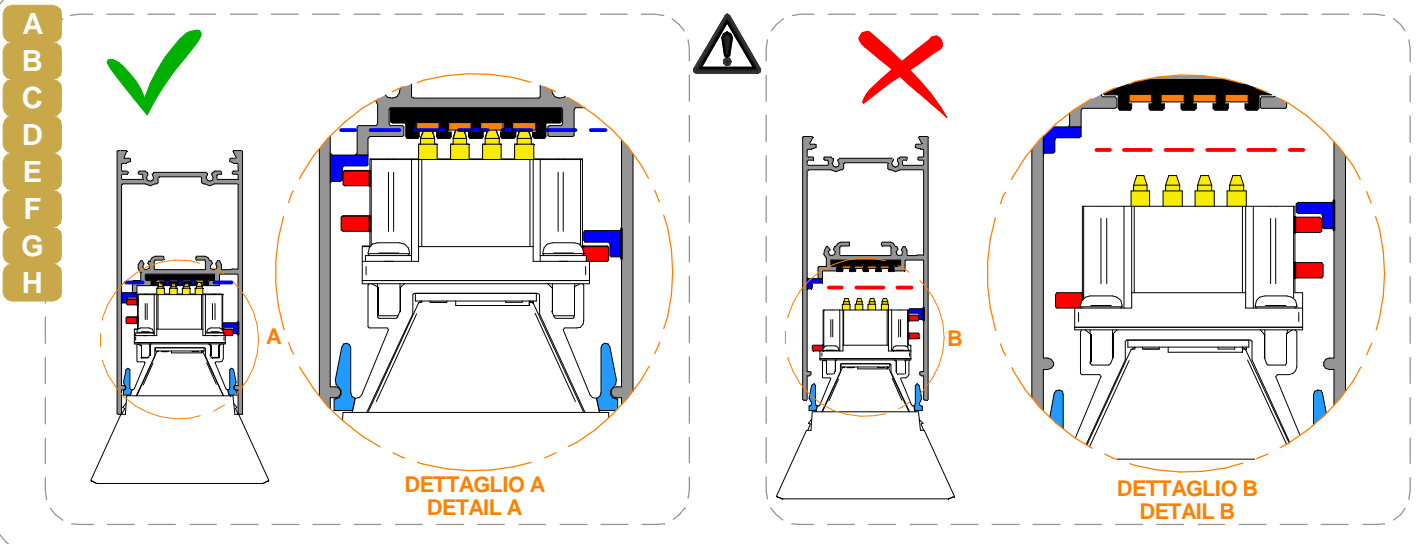
ESEMPIO INSTALLATIVO / INSTALLATION EXAMPLE



ESEMPIO INSTALLATIVO MICROPRISMATICO / MICROPRISMATIC INSTALLATION EXAMPLE



ATTENZIONE AL LATO DI INSTALLAZIONE/ PAY ATTENTION TO THE INSTALLATION SIDE



SERIES: ACCESSORI MODUS / MODUS ACCESSORIES

BRAND: i-L^èD

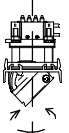
ESEMPIO INSTALLATIVO OPTUS EX / OPTUS EX INSTALLATION EXAMPLE

B

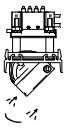
MASTER
SLAVE

CABLARE
WIRE

WIRE



360°



+/- 90°

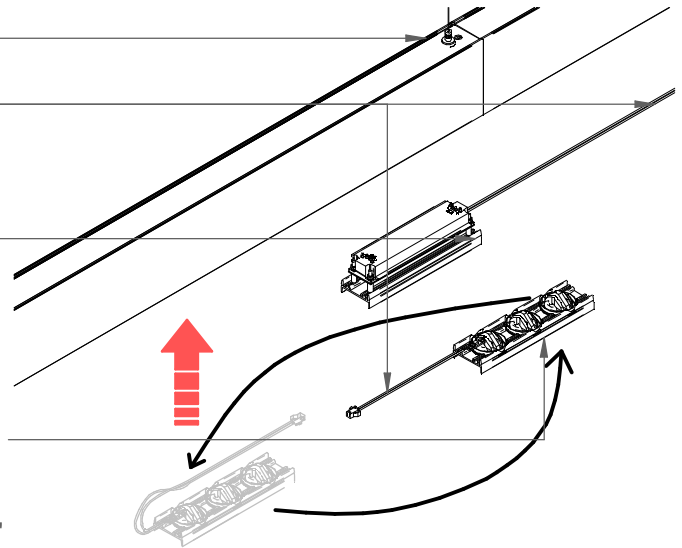
ELEMENTO FISSO
TENERE SEMPRE NELLA STESSA POSIZIONE

FIXED ELEMENT
ALWAYS KEEP IN THE SAME POSITION

ELEMENTO MOBILE
MONTARE PRIMA O DOPO "L'ELEMENTO FISSO"

MOBILE ELEMENT
INSTALL BEFORE OR AFTER "THE FIXED ELEMENT"

83732
83756



ESEMPIO INSTALLATIVO CELL, CELL_WW / CELL, CELL_WW INSTALLATION EXAMPLE

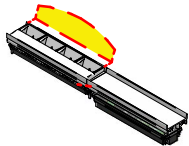
D

E

MASTER
SLAVE

CABLARE
WIRE

WIRE

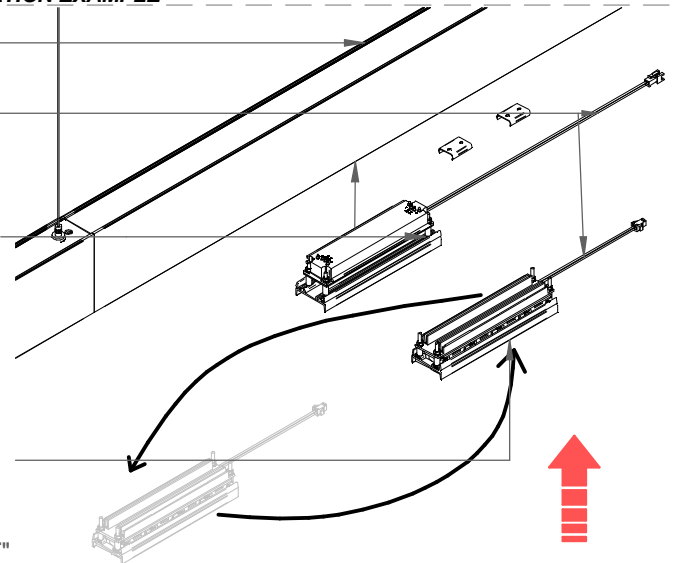


ELEMENTO FISSO
TENERE SEMPRE NELLA STESSA POSIZIONE

FIXED ELEMENT
ALWAYS KEEP IN THE SAME POSITION

ELEMENTO MOBILE
MONTARE PRIMA O DOPO "L'ELEMENTO FISSO"

MOBILE ELEMENT
INSTALL BEFORE OR AFTER "THE FIXED ELEMENT"

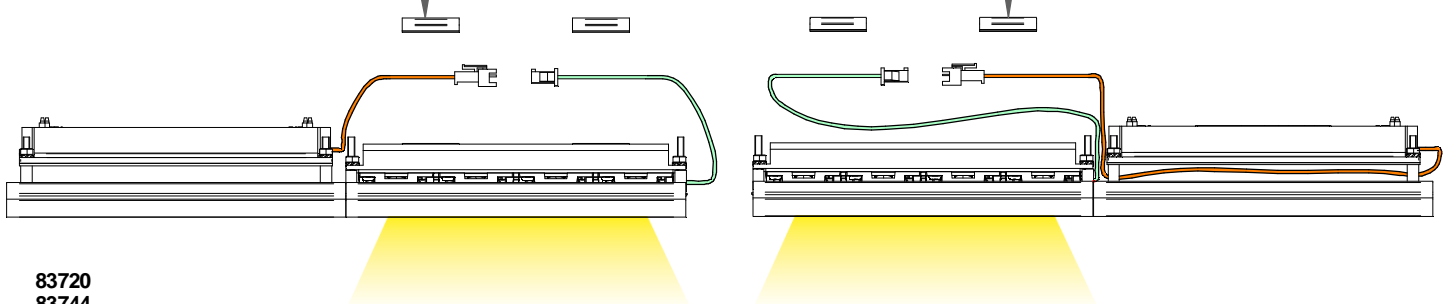


CORPO ILLUMINATE SUL LATO DESTRO
FITTING ON THE RIGHT SIDE

CABLARE E BLOCCARE
I CAVI CON LE MOLLE

WIRE AND FIX THE
CABLES WITH SPRINGS/CLIP

CORPO ILLUMINATE SUL LATO SINISTRO
FITTING ON THE LEFT SIDE



83720
83744
83721
83745

SERIES: ACCESSORI MODUS / MODUS ACCESSORIES

BRAND: i-LÈD

ESEMPIO INSTALLATIVO TAMPONAMENTO / COVER INSTALLATION EXAMPLE

H

MASTER
SLAVE

83725
83749
83729
83753
83726
83750
83727
83751
83728
83752

I TAMPONAMENTI NON HANNO LATO DI INSTALLAZIONE

THE COVERS HAVE NO INSTALLATION SIDE

**DETAGLIO M
DETAIL M**

**F
G**

SENSORE QUALITA' DELL'ARIA
AIR QUALITY SENSOR

C-E900004
C-E900005

SENSORE LUMINOSITA' PRESENZA
PIR LIGHT SENSOR

C-E900002
C-E900001

PER ULTERIORI DETTAGLI
CONTATTARE IL SUPPORTO
TECNICO
support@linealight.com

FOR FURTHER DETAIL CONTACT
TECHNICAL SUPPORT
support@linealight.com

**MASSIMO CARICO PER LINEA
MAX LOAD PER LINE**

TABELLA "C" TABLE "C"	
LUNGHEZZA LENGHT	MAX CARICO PER MASTER + N° SLAVE MAX LOAD PER MASTER + N° SLAVES
1200mm	90 W
1500mm	90 W
2400mm	140 W
3000mm	140 W

CARICHI MASSIMI / MAXIMUM LOADS

