

TEMPLATE: CONTROCASSE / OUTERCASING MK68_RF | MK68_R

BRAND: i-LèD

INFORMAZIONI TECNICHE - TECHNICAL INFORMATION

Tensione nominale - Rated voltage	Vedi tabella elenco prodotti - See product list table
Frequenza - Frequency	--
Classe di isolamento - Insulation class	CLASSE III
Temperatura ambiente di utilizzo - Ambiente temperature for using	-20°C ÷ +50°C
Grado di protezione - Degree of protection	IP 68
Potenza - Power	Vedi tabella elenco prodotti - See product list table

Installazione / Manutenzione - Installation / Maintenance

L'articolo dovrà essere installato da personale qualificato, **segundo le normative d'installazione vigenti del paese di appartenenza**; in caso di malfunzionamento o necessità di manutenzione della plafoniera contattare il servizio clienti LINEA LIGHT: support@linealight.com.

È VIETATO APRIRE/ TOCCARE L'ARTICOLO MENTRE È IN FUNZIONE;

Qualora non vengano rispettate le regole indicate, **l'azienda LINEA LIGHT declina ogni tipologia di responsabilità.**

The item must be installed by qualified personnel, **in accordance with the installation regulations in force in the country in question**; in case of ceiling light malfunction or need for maintenance contact LINEA LIGHT customer service: support@linealight.com.

IT IS FORBIDDEN TO OPEN/TOUCH THE ITEM WHILE IT IS IN OPERATION;

If the indicated rules are not respected, **the LINEA LIGHT company declines any type of responsibility.**

UTILIZZO CONFORME:

L'apparecchio è garantito esclusivamente se l'articolo in questione sia stato installato seguendo le istruzioni riportate in questo manuale istruzioni e da quello generale presente all'interno dell'imballo e/o scaricabile dal nostro sito www.linealight.com;

Un utilizzo scorretto dell'apparecchio può influire sulla durata utile della lampada e/o potrebbe avere un guasto precoce.

Per ulteriori avvertenze e spiegazione di eventuali simboli vedere il foglio istruzioni generale.

Conservare le presenti istruzioni per futuri lavori di installazione/manutenzione.

APPROPRIATE USE:

The appliance is guaranteed only if the item in question has been installed following the instructions given in this instruction manual and from the general one inside the packaging and/or downloadable from our website www.linealight.com;

Improper use of the fixture may affect the lamp life and/or may have premature failure.

For further warnings and explanation of any symbols, see the general instruction sheet.

Keep these instructions for future installation/maintenance work.

(ITA) - I prodotti devono essere installati tassativamente con alimentazioni, cablaggi e accessori originali del Gruppo Linea Light, o eventualmente approvati dall'azienda. L'utilizzo di accessori non originali, o non approvati, determina il decadimento di ogni garanzia sul prodotto. (ENG) - All power supply, wiring and accessories used for product installation shall be original Linea Light Group parts or approved by the company. The warranty will become void if non original or non approved parts are used. (FRA) - Les produits doivent impérativement être installés avec des alimentations, des câblages et des accessoires Linea Light Group, ou qui ont été approuvés par l'entreprise. L'utilisation d'accessoires non d'origine, ou non approuvés, entraîne la déchéance de toute garantie sur le produit. (ESP) - Los productos se han de instalar obligatoriamente con alimentaciones, cableados y accesorios originales de Linea Light Group o, de otra forma, deben ser aprobados por la empresa misma. El uso de accesorios no originales, o no aprobados, anula todas las garantías del producto. (GER) Die Produkte müssen obligatorisch mit Originalstromversorgung, Originalkabeln und Originalzubehör der Linea Light Group oder mit Teilen, die von der Linea Light Group ausdrücklich empfohlen sind, installiert werden. Die Verwendung von nicht originale oder nicht vom Hersteller empfohlenem Zubehör führt zu einem sofortigen Verfall vom Garantieanspruch für das Produkt.

TEMPLATE: CONTROCASSE / OUTERCASING MK68_RF | MK68_R

BRAND: i-LED



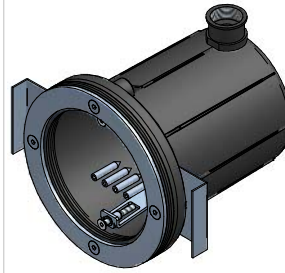
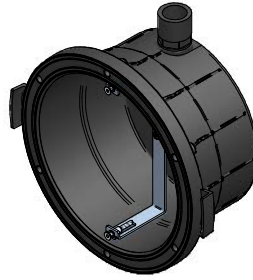
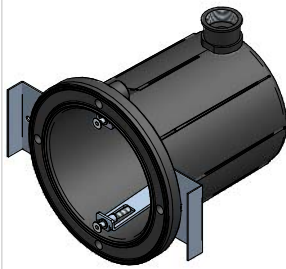
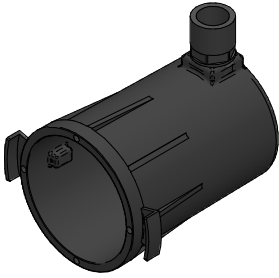
MK68_RF 4W - 4,5W
A. 83140

MK68_RF 13W - 14W
A. 83141

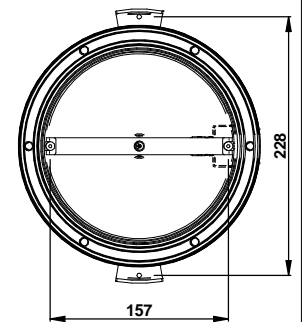
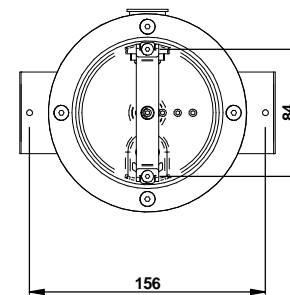
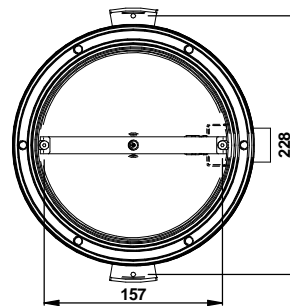
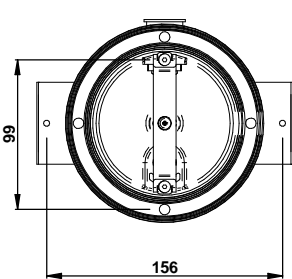
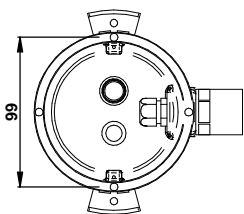
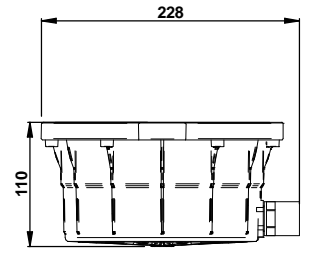
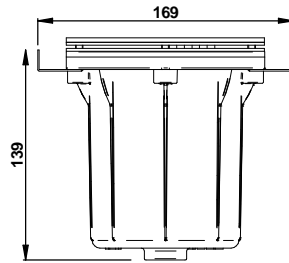
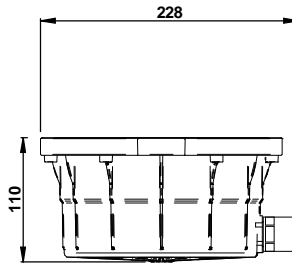
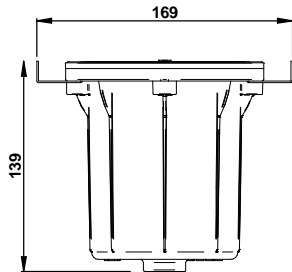
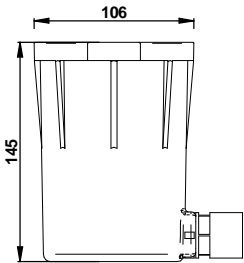
MK68_RF 18W - 25W
- 26W - 38W
A. 83142

MK68_R 13W - 14W
A. 83197

MK68_R 18W - 25W - 26W -
38W
A.83198



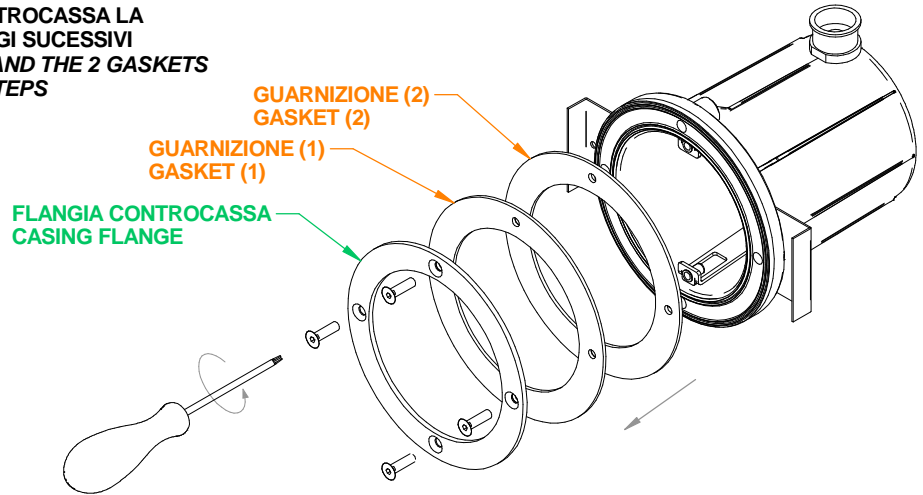
DIMENSIONI DIMENSIONS



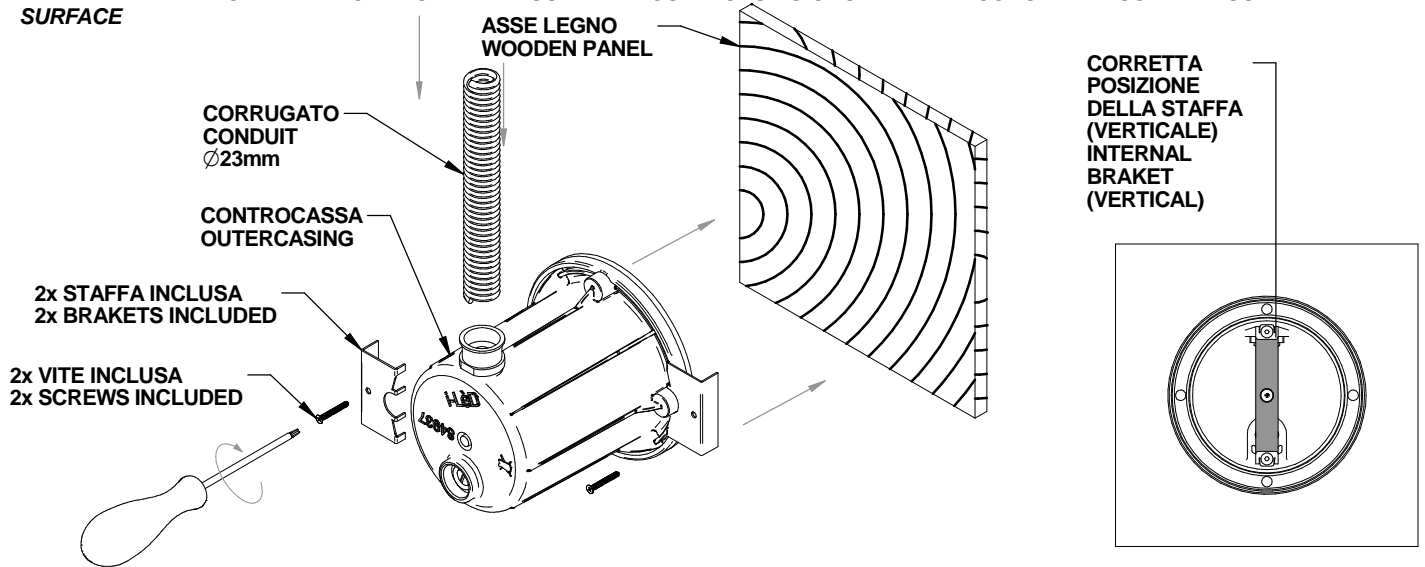
TEMPLATE: CONTROCASSE / OUTERCASING MK68_RF | MK68_R

BRAND: i-LèD

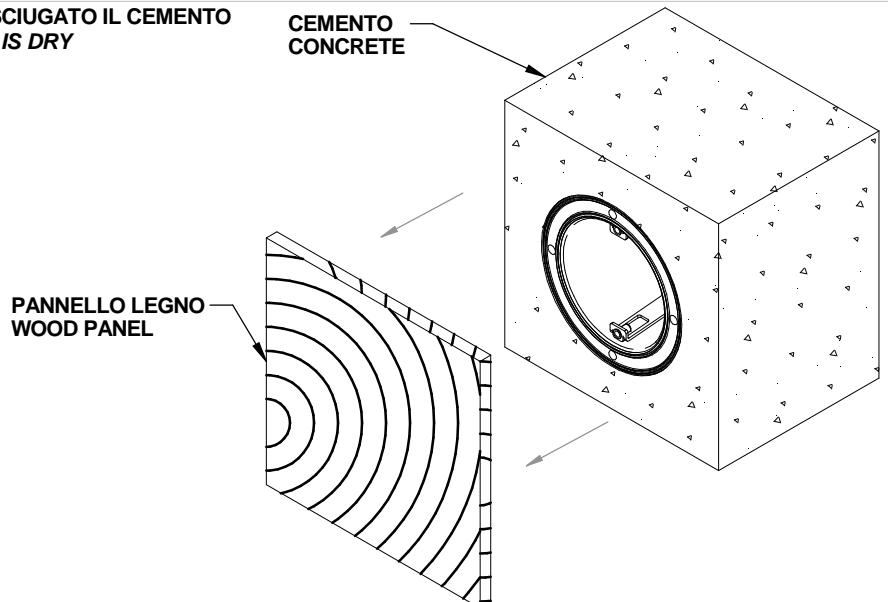
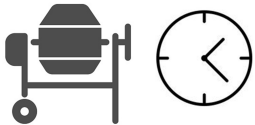
- 1** SOLO PER MK68_R RIMUOVERE DALLA CONTROCASSA LA FLANGIA E LE 2 GUARNIZIONI PER I PASSAGGI SUCCESSIVI
ONLY FOR MK68_R REMOVE THE FLANGE AND THE 2 GASKETS FROM THE OUTERCASING FOR THE NEXT STEPS



- 2** FISSARE LA CONTROCASSA AD UN PANNELLO DI LEGNO PER POSIZIONARLA NEL GETTO DI CEMENTO, POSIZIONARE LA CONTROCASSA CON LA STAFFA INTERNA IN VERTICALE COME IN FIGURA. LA CONTROCASSA UNA VOLTA ASCIUTTO IL CEMENTO DEVE ESSERE A RASO AL GETTO.
FIX THE FIXING OUTERCASING TO A WOODEN PANEL TO POSITION IT IN THE CONCRETE CASTING, POSITION THE OUTERCASING WITH THE INTERNAL BRACKET VERTICAL AS IN THE FIGURE. THE OUTERCASING ONCE DRY THE CONCRETE MUST BE FLUSH WITH THE SURFACE



- 3** RIMUOVERE IL PANNELLO DI LEGNO UNA VOLTA ASCIUGATO IL CEMENTO
REMOVE THE WOOD PANEL ONCE THE CONCRETE IS DRY



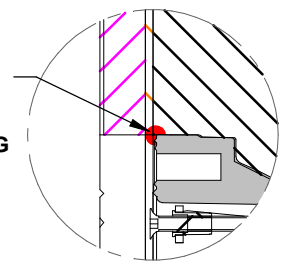
TEMPLATE: CONTROCASSE / OUTERCASING MK68_RF | MK68_R

BRAND: i-LèD

3.A SOLO PER MK68_RF INSTALLAZIONE SU PIASTRELLE
ONLY FOR MK68_RF INSTALLATION ON TILES



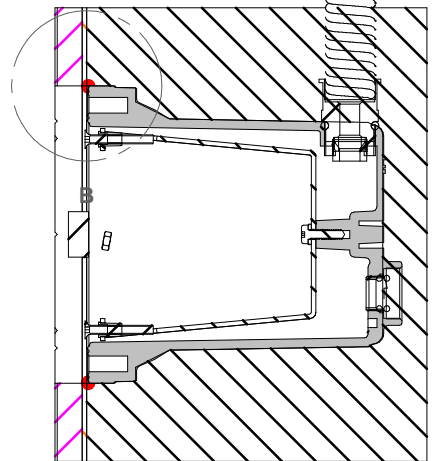
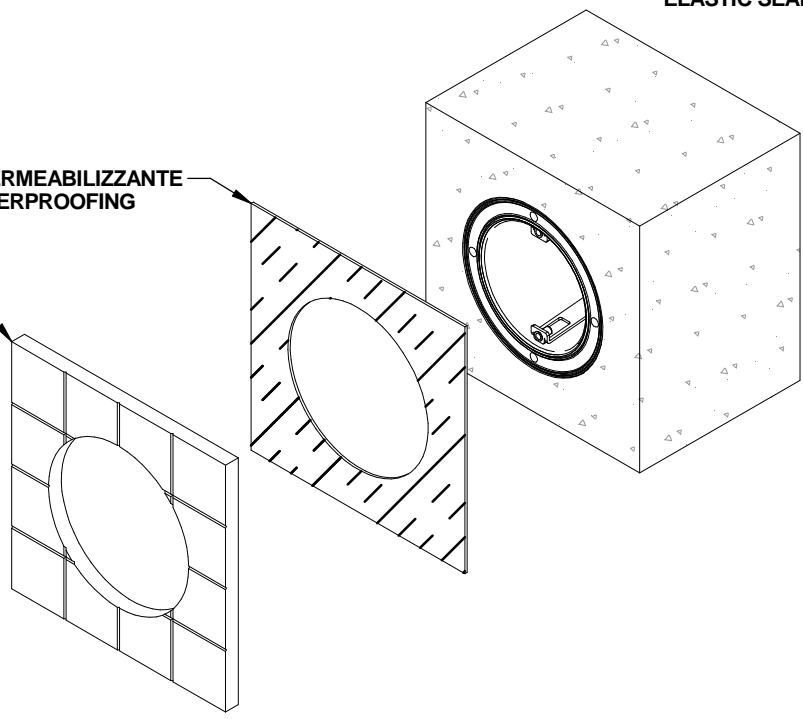
SIGILLARE CON MASTICE IDROESPANSIVO
TO SEAL WITH WATER-SWELLING ELASTIC SEALANT



DETTAGLIO B
DETAIL B

IMPERMEABILIZZANTE
WATERPROOFING

PIASTRELLE/
MOSAICO
TILES



min 10mm MAX 18mm
IMPERMEABILIZZANTE + PIASTRELLA / MOSAICO
WATERPROOF LAYER + TILES / MOSAIC

4.A

Impermeabilizzazione /
Waterproofing

Piastella / Tile

Collante / Adhesive



CHIUDERE BENE IL
PRESSACAVO

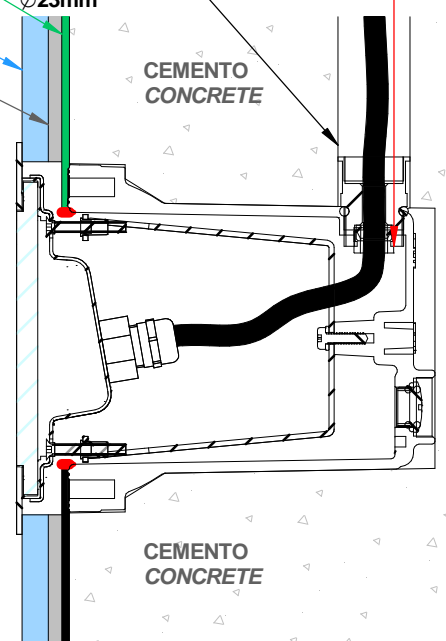
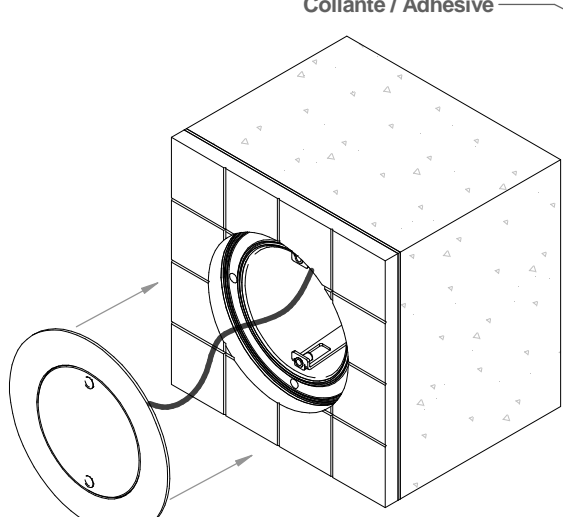
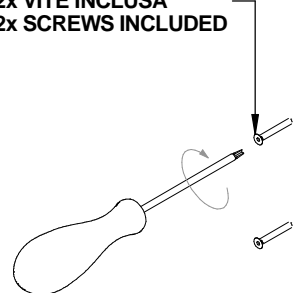
TIGHTEN THE
CABLE GLAND

CAVIDOTTO
CONDUIT
Ø23mm

CEMENTO
CONCRETE

CEMENTO
CONCRETE

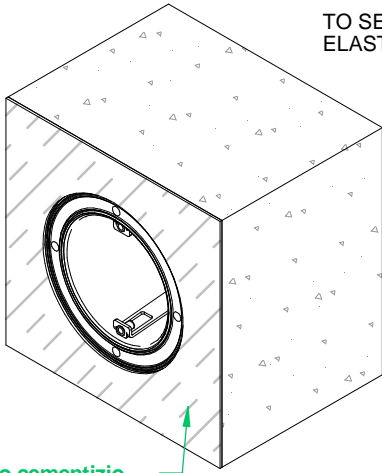
2x VITE INCLUSA
2x SCREWS INCLUDED



TEMPLATE: CONTROCASSE / OUTERCASING MK68_RF | MK68_R

BRAND: i-LèD

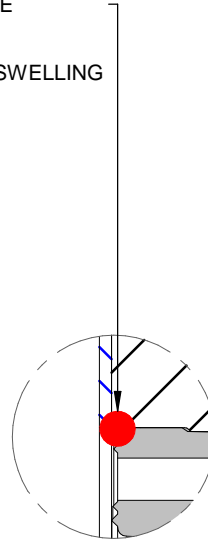
3.B SOLO PER MK68_R INSTALLAZIONE SU IMPERMEABILIZZANTE
ONLY FOR MK68_R INSTALLATION ON WATERPROOFING



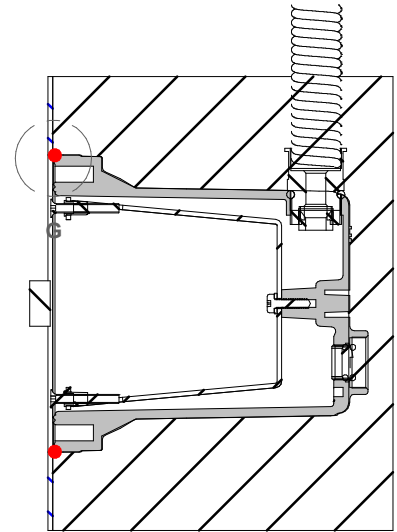
Isolante elastico cementizio
Elastic cementitious insulation

SIGILLARE CON MASTICE IDROESPANSIVO

TO SEAL WITH WATER-SWELLING ELASTIC SEALANT

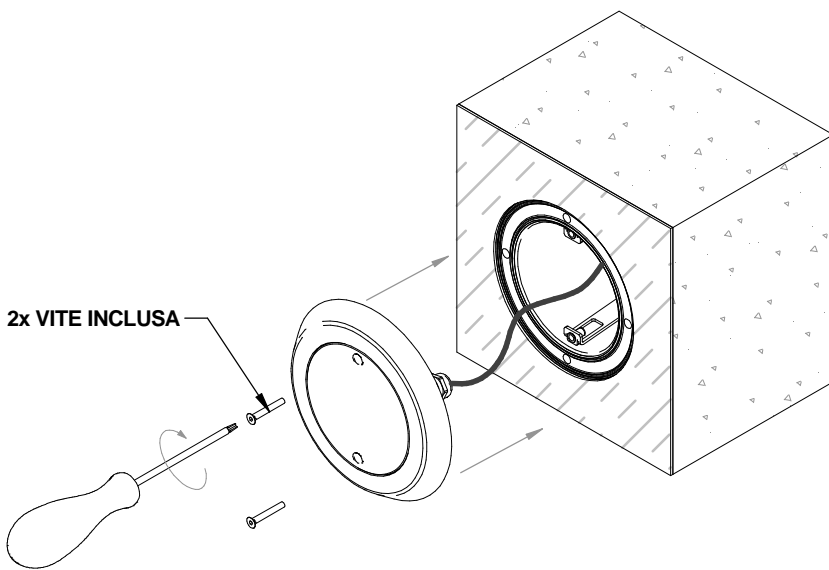


DETTAGLIO G
DETAIL G



4.B

2x VITE INCLUSA



CHIUDERE BENE IL PRESSACAVO

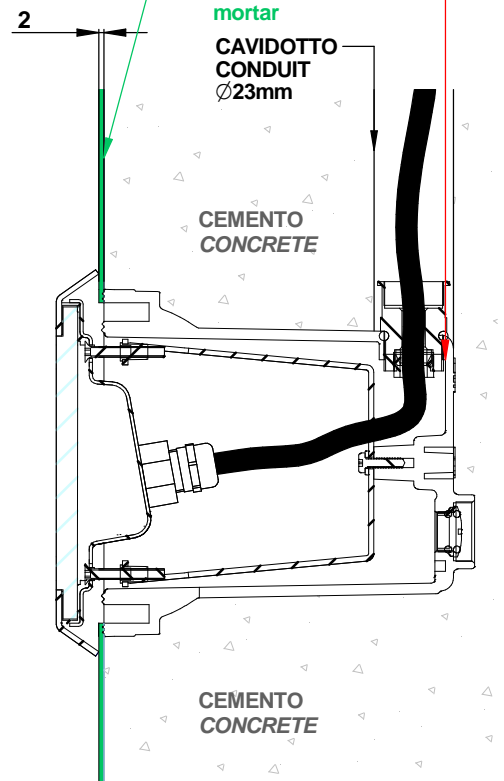
TIGHTEN THE CABLE GLAND

Isolante elastico cementizio

Waterproofing flexible cementitious mortar

CAVIDOTTO CONDUIT Ø23mm

CEMENTO CONCRETE



CEMENTO CONCRETE

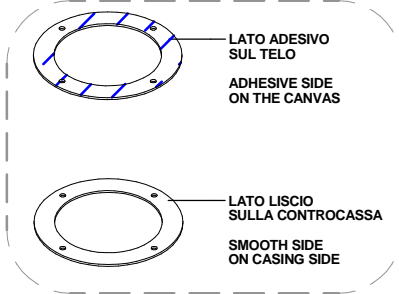
TEMPLATE: CONTROCASSA / OUTERCASING MK68_RF | MK68_R

BRAND: i-LèD

3.C

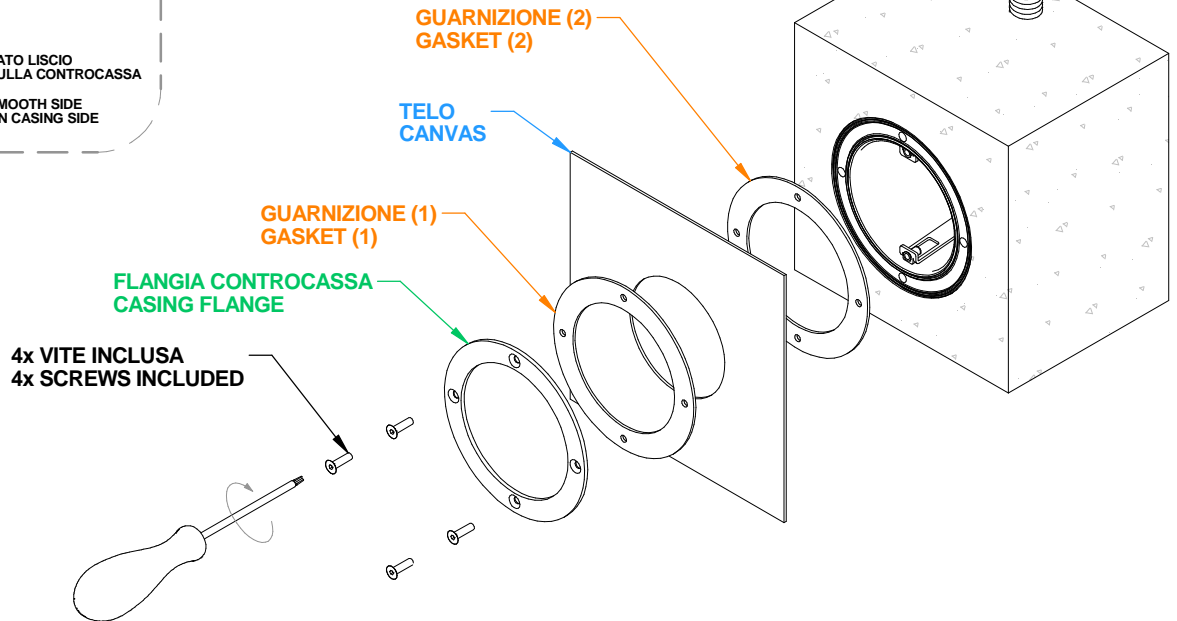
SOLO PER NAUTILUS_R INSTALLAZIONE SU TELO
ONLY FOR NAUTILUS_R INSTALLATION ON CANVAS

GUARNIZIONE / GASKET

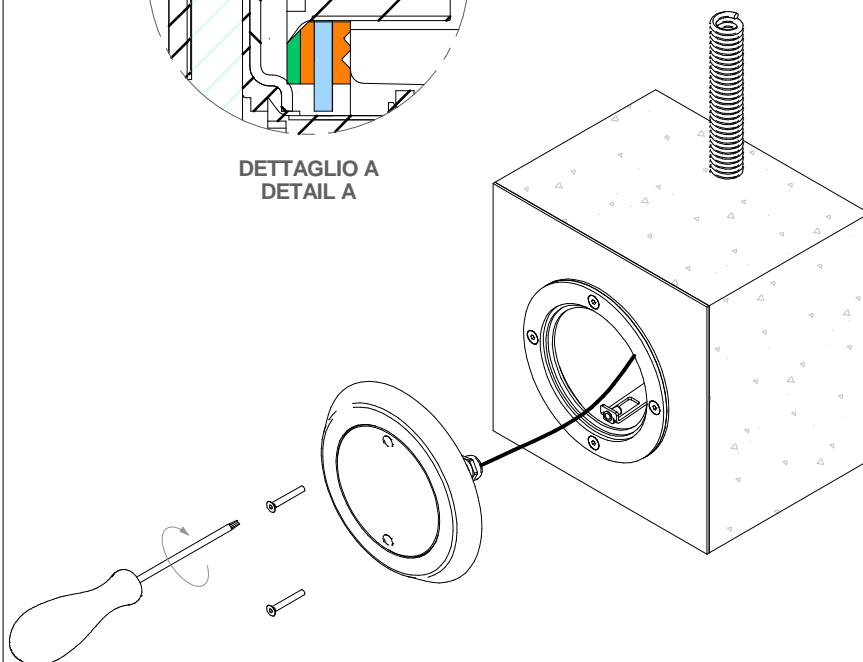
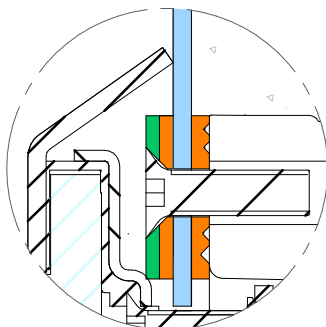


Ø CONTROCASSA | CASING Ø TELO | CANVAS

95 mm	89 mm
174 mm	168 mm



4.C



CHIUDERE BENE IL
PRESSACAVO

TIGHTEN THE
CABLE GLAND

CAVIDOTTO
CONDUIT
Ø23mm

2

CEMENTO
CONCRETE

CEMENTO
CONCRETE

TEMPLATE: CONTROCASSE / OUTERCASING MK68_RF | MK68_R

BRAND: i-LèD

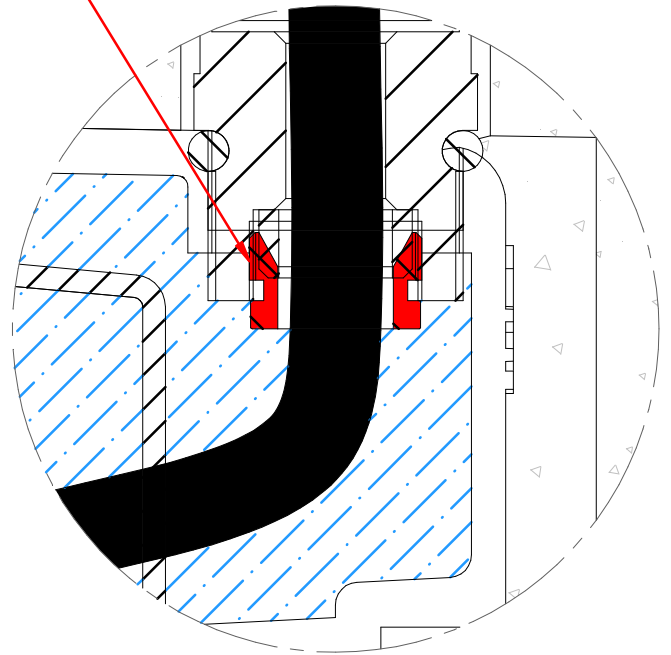
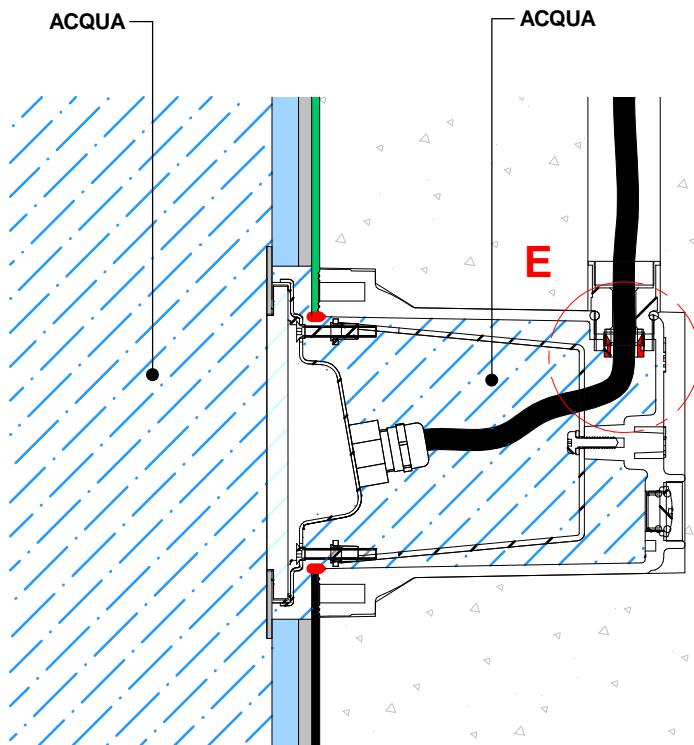
ATTENZIONE WARNING



LA CONTROCASSA SI RIEMPIE D'ACQUA PER IL CORRETTO FUNZIONAMENTO DEL PRODOTTO.
IL PRESSACAVO INTERNO DEVE ESSERE BEN SERRATO PER EVITARE PERDITE CHE DANNEGGINO IL CIRCUITO ELETTRICO



THE OUTER CASING NEEDS TO BE FILLED WITH WATER FOR THE FITTING TO WORK PROPERLY
THE INTERNAL CABLE GLAND MUST BE TIGHTENED TO AVOID LEAKS THAT COULD DAMAGE THE ELECTRICAL CIRCUIT



DETTAGLIO E
DETAIL E