

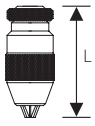
MANDRINI AUTO-SERRANTI DI PRECISIONE PER TRAPANI A COLONNA E MACCHINE UTENSILI

Industrial quality keyless drill chucks/Mandrins auto-serrant pour perceuses industrielle/

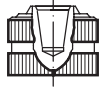
Portabroca autoajustable para taladro, calidad industrial/Mandris de perfuração sem chave de qualidade industrial

28035

Uso intensivo - massima precisione
Intensive use - max precision



Confezione
Packaging



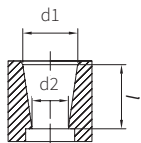
cod.	capacità sizes mm	attacco attachment	L	pcs.
2803540	1-16	B16	95	1



DIMENSIONI CARATTERISTICHE DEI CONI DI ATTACCO DEI MANDRINI IN ACCORDO

ALLE NORME DIN 238 E JACOBS® *Taper drill chucks dimensions in accordance with the DIN 238 standards and Jacobs®/Dimensions des mandrins de perçage coniques selon les normes DIN 238 et Jacobs®/Dimensões dos mandris de perfuração cónicos de acordo com as normas DIN 238 e Jacobs®*

Coni di attacco dei mandrini *Taper drill chuck shank*

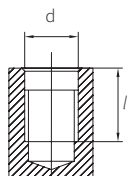


Tipo di norma	Cono del mandrino	d1 mm	d2 mm	l mm
DIN 238	B6	6,35	5,85	10,0
	B10	10,094	9,4	14,5
	B12	12,065	11,1	18,5
	B16	15,733	14,5	24,0
	B18	17,780	16,2	32,0
	B22	21,793	19,8	40,5
	B24	23,825	21,3	50,5
JACOBS	J0	6,350	5,803	11,11
	J1	9,754	8,468	16,67
	J2	14,2	12,39	22,23
	J2 corto	13,94	12,39	19,05
	J33	15,85	14,24	25,4
	J6	17,17	15,85	25,4
	J3	20,6	18,95	30,96
	J4	28,55	26,35	42,07

DIMENSIONI CARATTERISTICHE DEGLI ATTACCHI FILETTATI DEI MANDRINI

Thread drill chucks dimensions/Dimensions des mandrins de perçage à filetage/Dimensiones de los portabrocas de rosca/Dimensões dos mandris de broca de rosca

Attacchi filettati dei mandrini *Threaded drill chuck shank*



Tipo	Classe	d mm	Passo mm	l mm
3/8" x 24 UNF	3B	9,525	1,058	14,5
1/2" x 20 UNF	3B	12,700	1,270	16,0
5/8" x 16 UNF	3B	15,875	1,588	19,0
3/4" x 16 UNF	3B	19,050	1,588	19,0
M14 x 2	MA	14,00	2,00	19,0
M18 x 2.5	MA	18,00	2,50	19,0