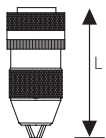


MANDRINI AUTOSERRANTI PER ELETTROUTENSILI

Keyless drill chucks for portable power drills/Mandrins auto-serrant avec système de verrouillage pour perceuses portatives à percussion/Portabroca sin llave con sistema de seguridad para taladros portátiles a percusión/Mandris de perfuração sem chave para berbequins elétricos portáteis

28031

Con ghiera di bloccaggio
With ring lock system



Confezione
Packaging



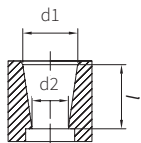
| cod. | capacità sizes mm | attacco attachment | L | pcs. |
|---------|-------------------------|-----------------------|-----|------|
| 2803140 | 1÷13 | 1/2x20 UNF | 100 | 1 |



DIMENSIONI CARATTERISTICHE DEI CONI DI ATTACCO DEI MANDRINI IN ACCORDO

ALLE NORME DIN 238 E JACOBS® *Taper drill chucks dimensions in accordance with the DIN 238 standards and Jacobs®/Dimensions des mandrins de perçage coniques selon les normes DIN 238 et Jacobs®/Dimensões dos mandris de perfuração cónicos de acordo com as normas DIN 238 e Jacobs®*

Coni di attacco dei mandrini *Taper drill chuck shank*

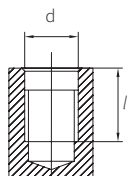


| Tipo di norma | Cono del mandrino | d1 mm | d2 mm | l mm |
|---------------|-------------------|----------|----------|---------|
| DIN 238 | B6 | 6,35 | 5,85 | 10,0 |
| | B10 | 10,094 | 9,4 | 14,5 |
| | B12 | 12,065 | 11,1 | 18,5 |
| | B16 | 15,733 | 14,5 | 24,0 |
| | B18 | 17,780 | 16,2 | 32,0 |
| | B22 | 21,793 | 19,8 | 40,5 |
| | B24 | 23,825 | 21,3 | 50,5 |
| JACOBS | J0 | 6,350 | 5,803 | 11,11 |
| | J1 | 9,754 | 8,468 | 16,67 |
| | J2 | 14,2 | 12,39 | 22,23 |
| | J2 corto | 13,94 | 12,39 | 19,05 |
| | J33 | 15,85 | 14,24 | 25,4 |
| | J6 | 17,17 | 15,85 | 25,4 |
| | J3 | 20,6 | 18,95 | 30,96 |
| | J4 | 28,55 | 26,35 | 42,07 |

DIMENSIONI CARATTERISTICHE DEGLI ATTACCHI FILETTATI DEI MANDRINI

Thread drill chucks dimensions/Dimensions des mandrins de perçage à filetage/Dimensiones de los portabrocas de rosca/Dimensões dos mandris de broca de rosca

Attacchi filettati dei mandrini *Threaded drill chuck shank*



| Tipo | Classe | d mm | Passo mm | l mm |
|----------------------|--------|---------|-------------|---------|
| 3/8" x 24 UNF | 3B | 9,525 | 1,058 | 14,5 |
| 1/2" x 20 UNF | 3B | 12,700 | 1,270 | 16,0 |
| 5/8" x 16 UNF | 3B | 15,875 | 1,588 | 19,0 |
| 3/4" x 16 UNF | 3B | 19,050 | 1,588 | 19,0 |
| M14 x 2 | MA | 14,00 | 2,00 | 19,0 |
| M18 x 2.5 | MA | 18,00 | 2,50 | 19,0 |