

**MANDRINI A CREMAGLIERA PER ELETTROUTENSILI PORTATILI E PER MACCHINE UTENSILI, COMPLETI DI CHIAVE, DIN 6349** *Keyless chucks for portable power tools, key chuck included/Mandrins sans clé pour outils électriques portables, mandrin à clé inclus/Portabrocas com llave calidad profesional uso intensivo/Mandris sem chave para ferramentas elétricas portáteis, mandril de chave incluído*

**28004**

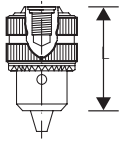
**Uso intensivo**  
*Intensive use*



Confezione  
*Packaging*



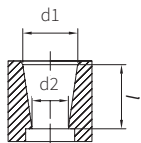
cod.	capacità sizes mm	attacco attachment	L	chiave key	pcs.
<b>2800440</b>	2-13	1/2x20 UNF	57	S2	1



## DIMENSIONI CARATTERISTICHE DEI CONI DI ATTACCO DEI MANDRINI IN ACCORDO

ALLE NORME DIN 238 E JACOBS® *Taper drill chucks dimensions in accordance with the DIN 238 standards and Jacobs®/Dimensions des mandrins de perçage coniques selon les normes DIN 238 et Jacobs®/Dimensões dos mandris de perfuração cónicos de acordo com as normas DIN 238 e Jacobs®*

### Coni di attacco dei mandrini *Taper drill chuck shank*

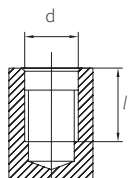


Tipo di norma	Cono del mandrino	d1 mm	d2 mm	l mm
DIN 238	B6	6,35	5,85	10,0
	B10	10,094	9,4	14,5
	B12	12,065	11,1	18,5
	B16	15,733	14,5	24,0
	B18	17,780	16,2	32,0
	B22	21,793	19,8	40,5
	B24	23,825	21,3	50,5
JACOBS	J0	6,350	5,803	11,11
	J1	9,754	8,468	16,67
	J2	14,2	12,39	22,23
	J2 corto	13,94	12,39	19,05
	J33	15,85	14,24	25,4
	J6	17,17	15,85	25,4
	J3	20,6	18,95	30,96
	J4	28,55	26,35	42,07

## DIMENSIONI CARATTERISTICHE DEGLI ATTACCHI FILETTATI DEI MANDRINI

*Thread drill chucks dimensions/Dimensions des mandrins de perçage à filetage/Dimensiones de los portabrocas de rosca/Dimensões dos mandris de broca de rosca*

### Attacchi filettati dei mandrini *Threaded drill chuck shank*



Tipo	Classe	d mm	Passo mm	l mm
<b>3/8" x 24 UNF</b>	3B	9,525	1,058	14,5
<b>1/2" x 20 UNF</b>	3B	12,700	1,270	16,0
<b>5/8" x 16 UNF</b>	3B	15,875	1,588	19,0
<b>3/4" x 16 UNF</b>	3B	19,050	1,588	19,0
<b>M14 x 2</b>	MA	14,00	2,00	19,0
<b>M18 x 2.5</b>	MA	18,00	2,50	19,0