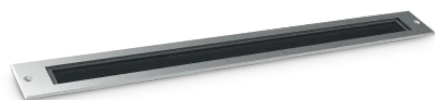


## Info generali

## Esterno - Lampade da incasso

Outdoor floor recessed adjustable linear fitting with integrated LED sources and direct light emission

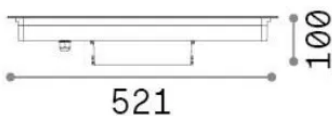


<b>Ean</b>	8021696351285
<b>Articolo</b>	THOR FI D50 3000K
<b>Installazione</b>	Lampade da incasso
<b>Garanzia</b>	5 years
<b>Peso lordo</b>	3.85 kg
<b>Volume</b>	-

## Info tecniche e installative

<b>Peso netto</b>	3.1 kg
<b>Classe di isolamento</b>	II
<b>Grado di protezione</b>	IP67
<b>Conformità</b>	CE
<b>Temperatura d'esercizio</b>	-15° ~ +45 °C
<b>Dimmer</b>	Non-dimmable, On-Off
<b>Alimentazione</b>	220-240 V AC 50/60 Hz
<b>Alimentatore</b>	In-built, included NO, electronic

62



## Info sorgente e prestazionali

<b>Sorgente integrata</b>	Integrated LED module
<b>Sorgente sostituibile</b>	Replaceable (by qualified operators only)
<b>Potenza</b>	19 W
<b>Emissione</b>	Direct
<b>Consumo massimo</b>	max 19 W
<b>Caratteristiche LED</b>	LED SMD OSRAM
<b>CCT LED</b>	3000 K
<b>Durata LED (t. 25°c)</b>	50000 h
<b>CRI</b>	> 90
<b>SDCM</b>	3
<b>Fascio luminoso</b>	26°
<b>Flusso sorgente</b>	1700 lm
<b>Flusso utile</b>	1160 lm
<b>Rischio fotobiologico</b>	2