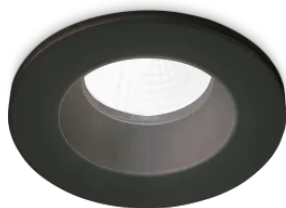


## Info generali

### Tecnico - Lampade da incasso

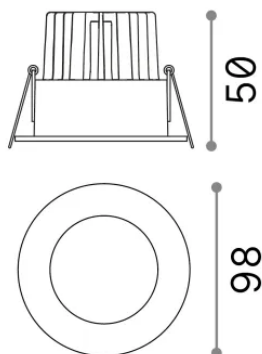
Indoor ceiling recessed projector with integrated LED sources, enhanced protection and direct light emission



<b>Ean</b>	8021696252032
<b>Articolo</b>	ROOM-65 FI ROUND NE
<b>Installazione</b>	Lampade da incasso
<b>Garanzia</b>	5 years
<b>Peso lordo</b>	0.35 kg
<b>Volume</b>	0.001296 m <sup>3</sup>

## Info tecniche e installative

<b>Peso netto</b>	0.22 kg
<b>Classe di isolamento</b>	II
<b>Grado di protezione</b>	IP20
<b>Conformità</b>	CE
<b>Temperatura d'esercizio</b>	0° ~ +40 °C [DO NOT COVER]
<b>Dimmer</b>	Non-dimmable, On-Off
<b>Alimentazione</b>	220-240 V AC 50/60 Hz
<b>Alimentatore</b>	Separate, included Replaceable (by qualified operators only), electronic
<b>Protezione frontale</b>	IP65



## Info sorgente e prestazionali

<b>Sorgente integrata</b>	Integrated LED module
<b>Sorgente sostituibile</b>	Replaceable (by qualified operators only)
<b>Potenza</b>	7,5 W
<b>Emissione</b>	Direct
<b>Consumo massimo</b>	max 7,5 W
<b>Caratteristiche LED</b>	LED COB
<b>CCT LED</b>	3000 K
<b>Durata LED (t. 25°c)</b>	50000 h
<b>CRI</b>	> 90
<b>SDCM</b>	3
<b>Fascio luminoso</b>	38°
<b>UGR massimo</b>	< 22
<b>Flusso sorgente</b>	750 lm
<b>Flusso utile</b>	510 lm